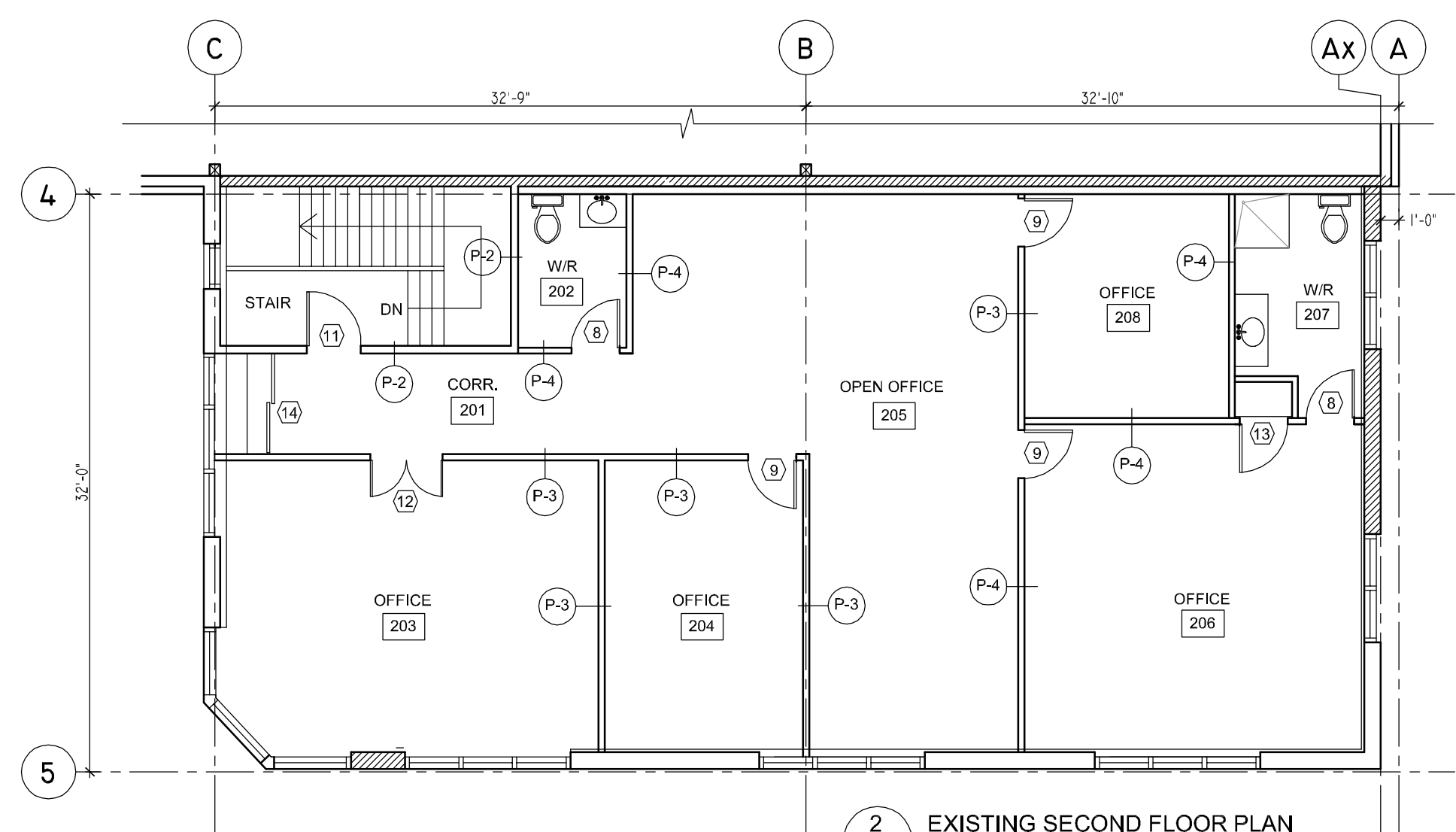
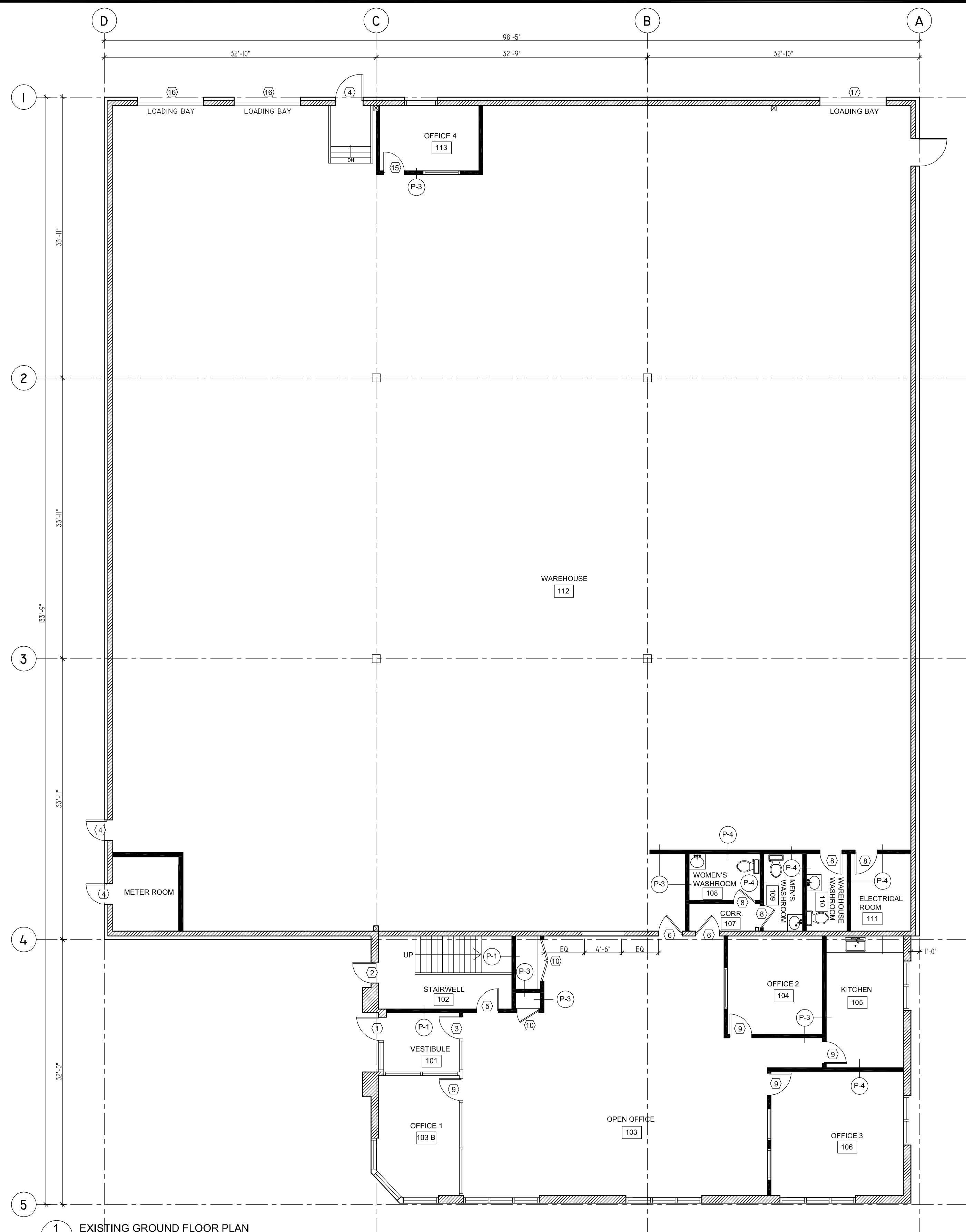


CONTRACTOR SHALL CHECK AND VERIFY ALL DIMENSIONS ON SITE. ALL DRAWINGS ARE THE PROPERTY OF THE ARCHITECT AND MAY NOT BE USED WITHOUT HIS PERMISSION. THIS DRAWING IS NOT TO BE USED FOR CONSTRUCTION UNTIL COUNTERSIGNED BY THE ARCHITECT. DRAWINGS ARE NOT TO BE SCALED.

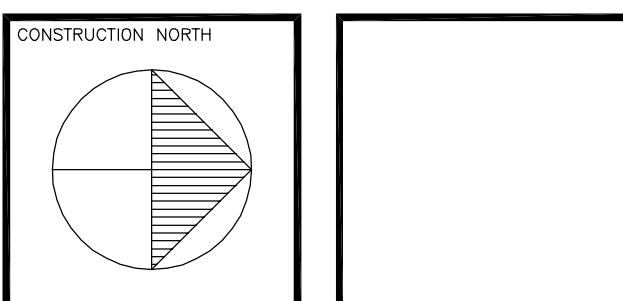


DOOR SCHEDULE		PARTITION SCHEDULE	
(1) 3' x 7'	ALUMIN. ENTRANCE DOOR W/ TEMP. GLAZING IN ALUM. FRAME C/W CLOSER & LOCK SET PUSH-PULL HARDWARE SIDELIGHT AND TRANSOM ANODIZED FINISH	(4) 3' x 7'	EXIT DOOR, METAL, INSULATED IN METAL METAL FRAME, C/W CLOSER & LOCK SET, WEATHERSTRIPPING FINISH PAINT
(2) 3' x 7'	ALUMIN. EXIT DOOR W/ TEMP. GLAZING IN ALUM. FRAME C/W CLOSER & PUSH-PULL HARDWARE, ANODIZED FINISH	(5) 3' x 7'	45 MIN F.R.R. DOOR HOLLOW METAL, IN METAL FRAME C/W CLOSER, FINISH PAINT
(3) 3' x 7'	ALUMIN. DOOR W/ SIDELIGHT TEMP. GLAZING IN ALUM. FRAME C/W CLOSER & PUSH-PULL HARDWARE, ANODIZED FINISH	(6) 3' x 7'	HOLLOW MTL. DOOR IN MTL FRAME C/W CLOSER, FINISH PAINT
		(7) 3' x 7'	HOLLOW MTL. DOOR IN MTL FRAME C/W CLOSER, FINISH PAINT
		(8) 2'-8" x 7'	WOOD, SOLID CORE DOOR IN METAL FRAME, PAINTED C/W CLOSER, PRIVACY LOCK SIGNAL & WASHROOM SIGN
		(9) 2'-8" x 7'	WOOD, SOLID CORE DOOR IN METAL FRAME, PAINTED C/W CLOSER
		(10) 2'-8" x 7'	WOOD, HOLLOW CORE DOOR IN METAL FRAME, PAINTED C/W CLOSER, FINISH PAINT
		(11) 3' x 7'	45 MIN F.R.R. DOOR HOLLOW METAL IN METAL FRAME C/W CLOSER, FINISH PAINT
		(12) 2'-2" x 7'	WOOD, HOLLOW CORE DOOR IN METAL FRAME, PAINT FINISH
		(13) 2' x 7'	SAME AS '10'
		(14) —	SLIDERS
		(15) 3' x 7'	HOLLOW MTL DOOR IN MTL FRAME FINISH PAINT
		(16) 8' x 10'	OHD METAL, PAINTED, INSULATED
		(17) 10' x 12'	OHD METAL, PAINTED, INSULATED
		(18) 2'-3' x 8'	HOLLOW METAL DBL DOORS, MTL FRAME, PAINTED N.F.R. LEFT INACTIVE, RIGHT ACTIVE, BOTH W/ LOCK HOLE

PARTITION SCHEDULE	
(P-1)	45 MIN F.R.R. CONC. BLOCK WALL THICKNESS AS PER FLOOR PLAN + 1/2" DRYWALL ON ONE SIDE (ALONG OFFICE & VESTIBULE AREA)
(P-2)	45 MIN F.R.R. PARTITION ULC DESIGN No. W408
(P-3)	TYPICAL INTERIOR PARTITION 3-5/8" METAL STUDS @ 16" APART O.C. + 1/2" DRYWALL ON BOTH SIDES
(P-4)	AS 'P-3' BUT WITH SOUND INSULATION SOUND ATTENUATION BATTS WITHIN PARTITION

1	MAR 01 2013	BUILDING PERMIT	
NO	DATE	REVISION/ISSUED FOR	BY

PROJECT NAME
PROPOSED INTERIOR ALTERATION TO EXISTING BUILDING 242 EARL STEWART DRIVE AURORA, ONTARIO



WES SURDYKA
architect inc

3645 KEELE STREET, 2nd FLOOR, STE 108
 TORONTO, ONTARIO M3J 1M8
 TEL (416) 630-2254 FAX (416) 630-5741
 surdykaarchitect@bellnet.ca

DRAWING TITLE
EXISTING FLOOR PLANS

DRAWN BY	DATE	SCALE	START DATE	PROJECT NO.
	MAR 01 2013	AS SHOWN	MAR 2013	
DRAWING NO.	A3.0E		OF	
			13-06	