



For Sublease: Office

96 Spadina Avenue

Outstanding 4,788 SF Brick & Beam Suite

Lennard:

Here is where your business will *grow*.

lennard.com



Property Overview

96 Spadina Avenue

4,788 SF executive office available for sublease at the corner of Spadina Avenue and Adelaide Street W in the heart of downtown Toronto.



Available Space



Suite 205 & 207
4,788 SF



Net Asking Rate
Call Listing Team to Discuss



Additional Rent
\$24.95 PSF
(plus utilities & janitorial)



Term
July 31, 2025



Joseph Wise*
Senior Vice President
416.649.5909
jwise@lennard.com

*Sales Representative

Anna Ho
Sales Representative
647.994.2623
anna@lennard.com

Highlights

- Spectacular, bright brick & beam space
- Soring ceilings
- Open concept plan with 2 glass meeting rooms
- Furniture available
- Landlord open to direct extension deal

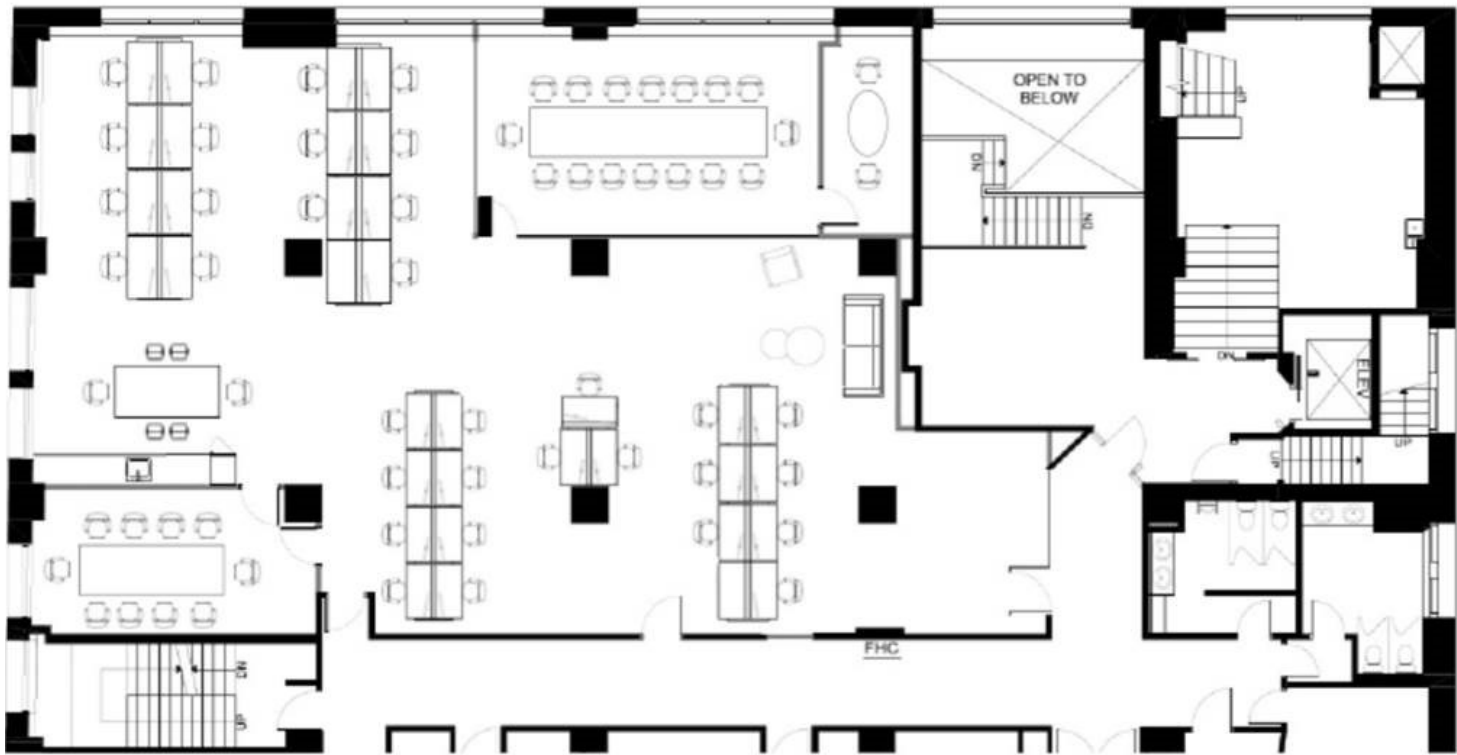


Location Overview



Floor Plan

Suites 205 & 207 - 4,788 SF



 Transit Score
100

 Bike Score
98

 Walk Score
99

96 Spadina Avenue



*A bright future
for your business
is right here.*

Lennard:

Joseph Wise*, Senior Vice President
416.649.5909
jwise@lennard.com

Anna Ho, Sales Representative
647.994.2623
anna@lennard.com

200-55 University Avenue, Toronto
416.649.5920
lennard.com

*Sales Representative

Statements and information contained are based on the information furnished by principals and sources which we deem reliable but for which we can assume no responsibility. Lennard Commercial Realty, Brokerage.