



For Sublease: Office

# 90 Eglinton Avenue E

## Suite 990

Excellent Opportunity in the heart of the bustling  
Yonge and Eglinton neighbourhood

**Lennard:**

[lennard.com](http://lennard.com)



# 90 Eglinton Avenue E

2,097 SF office suite available for sublease in Midtown Toronto near the corner of Yonge Street and Eglinton Avenue E.



Available Space

**990: 2,097 SF**



Net Rent

**Please Contact Listing Agent for Details**

Additional Rent

**\$24.66 PSF**



Available

**Immediately**

Term

**Until February 28, 2026**

*Head Landlord willing to extend*



Listing Agent

**Joseph Wise\***

Executive Vice President

416.649.5909

[jwise@lennard.com](mailto:jwise@lennard.com)

\*Sales Representative



## Property Highlights

- Short term sublease with high-end improvements
- Furniture can be made available as part of the transaction
- 2 minute walk to subway at Eglinton Station; Eglinton Crosstown coming soon
- Ground floor retail amenities for employees' benefit
- BOMA Best Certified Silver building
- Underground parking
- Barrier free access
- 24/7 security on-site
- First class ownership and property management
- All finishes in like-new condition with lots of use of glass to allow natural light into the interior of the space of this beautiful corner suite



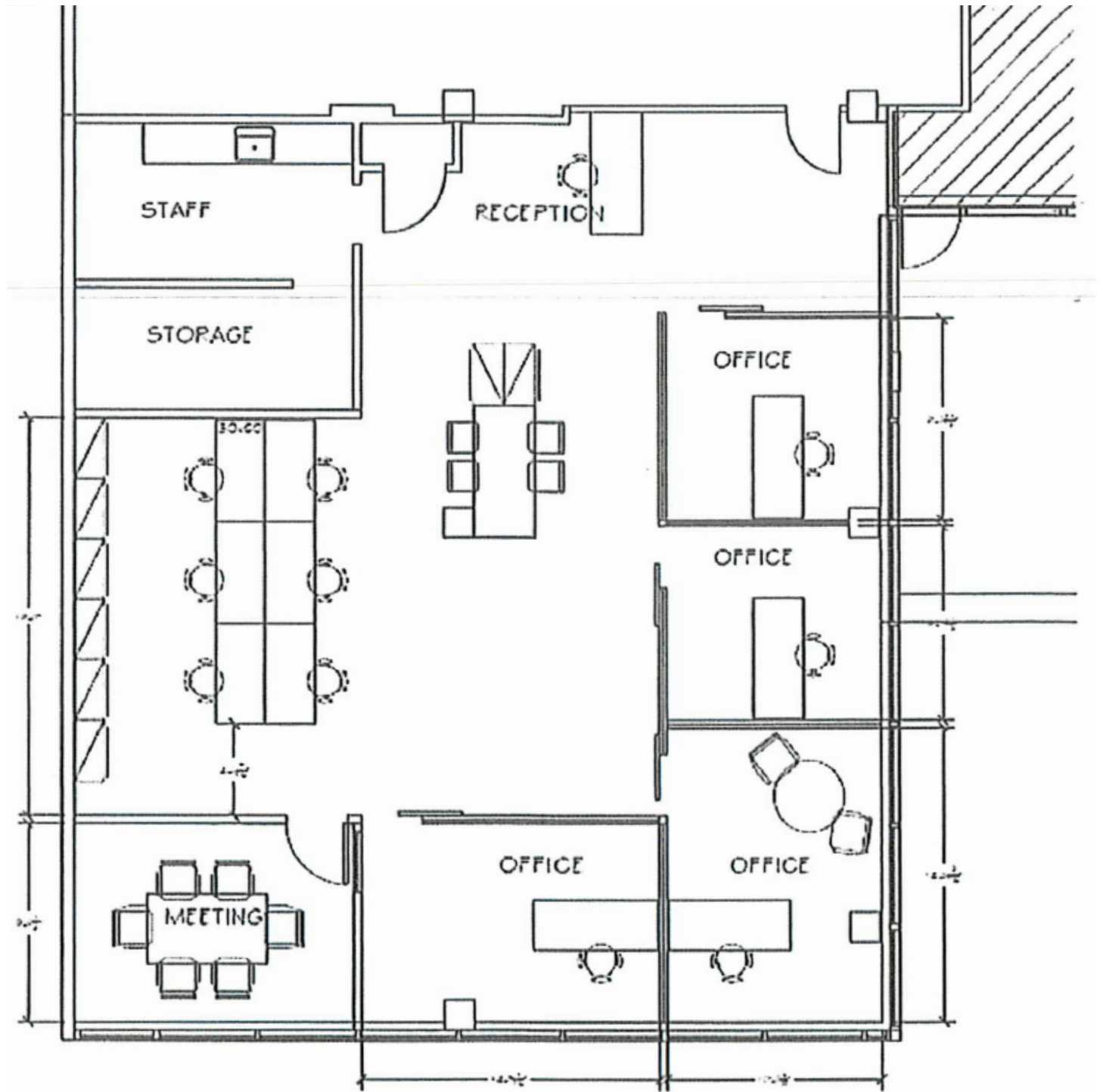
● ●

[illegible]



# 90 Eglinton Avenue E

Floor Plan: Suite 990 - 2,097 SF





# 90 Eglinton Avenue E

