

Lennard:

For Sublease: Office

8 King Street E

Renovated, Fully Furnished Model Suite



8 King Street E

3,302 SF recently renovated office available for sublease at the corner of Yonge Street and King Street E in the heart of Toronto's Financial Core.



Suite

Suite 1802

Available Space

3,302 SF



Net Rent

Contact Listing Agent

Additional Rent

\$30.00 PSF



Availability

Immediate

Sublease Term

June 30, 2026



Listing Agents

Joseph Wise*

Executive Vice President

416.649.5909

jwise@lennard.com

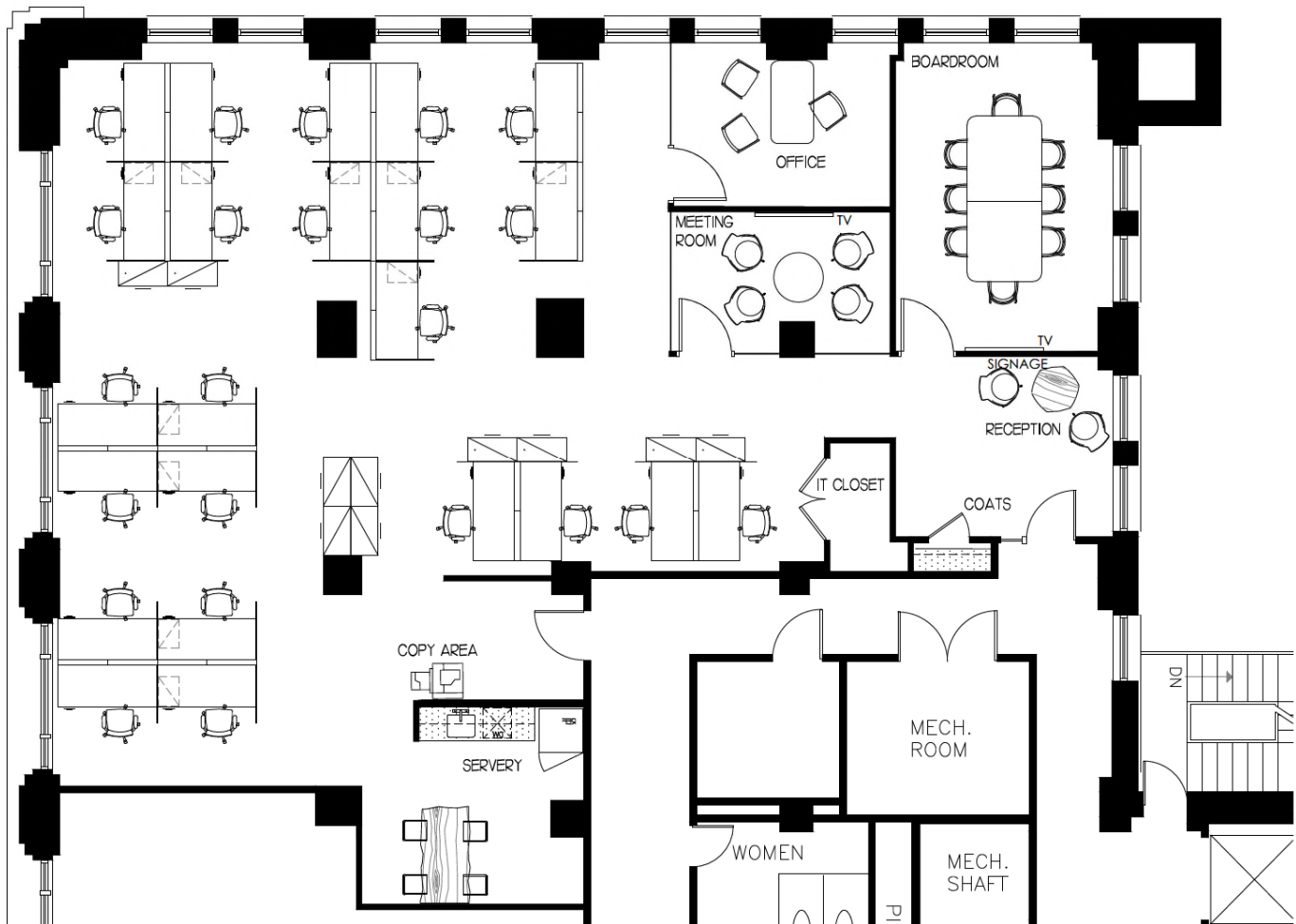
*Sales Representative

Property Highlights

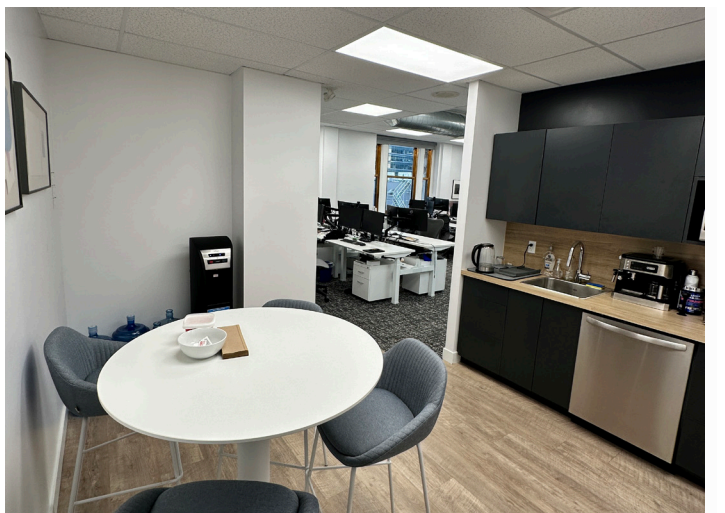
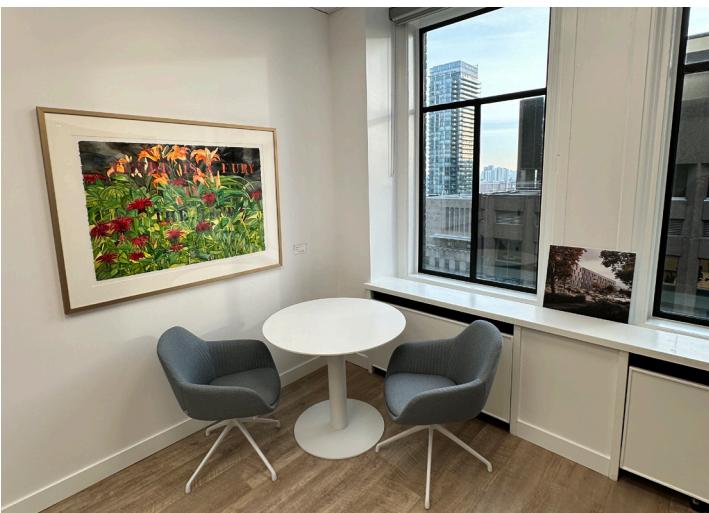
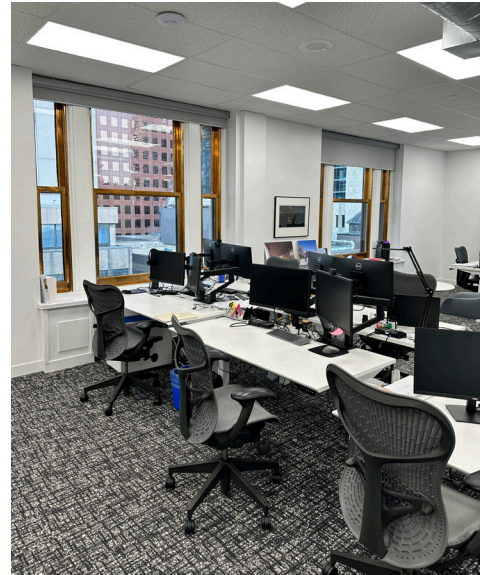
- Recently renovated, fully furnished model suite
- High ceilings, LED lighting
- Open concept and modern feel
- Highly desirable space for many different industries
- King Station subway and PATH connection at front door of building

8 King Street E

Floor Plan



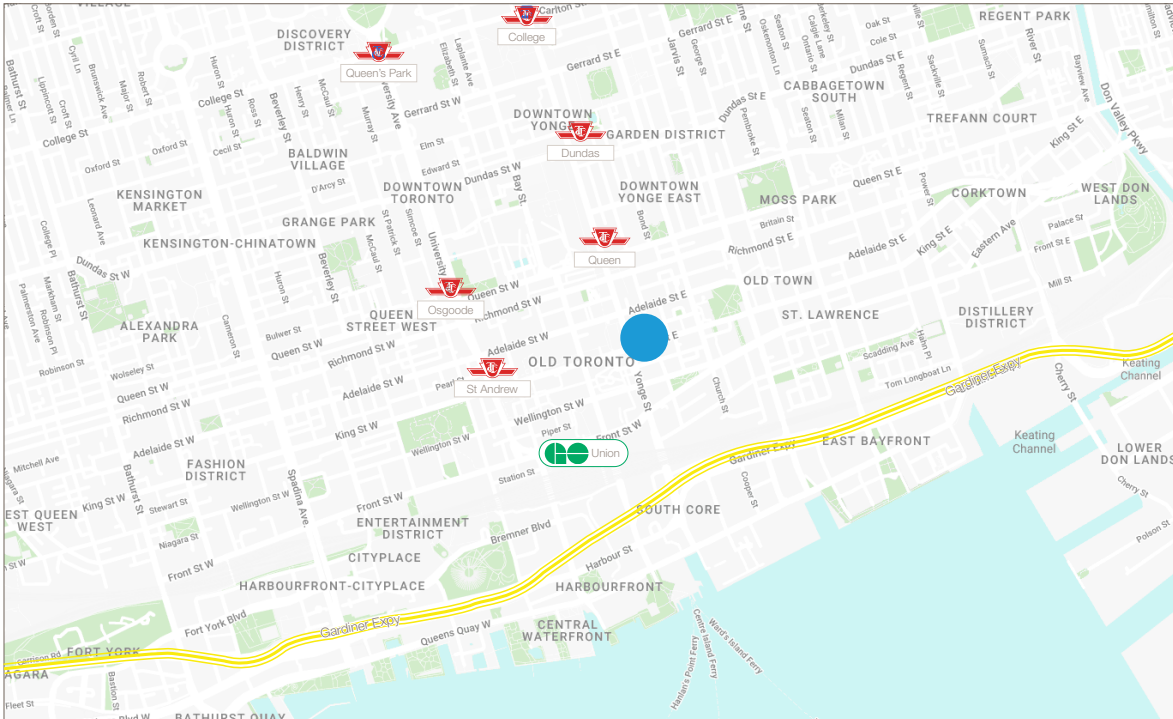
8 King Street E



Lennard:

lennard.com

8 King Street E



What's Near By

8 King Street E is located at the corner of Yonge Street and King Street E in the Financial Core. This location has direct access to the PATH system with a wealth of amenities including restaurants and cafes, retail stores, entertainment venues, and financial institutions. It's easily accessible by public transit, with several subway stations nearby, making it a bustling and convenient area in the heart of Toronto.

Statements and information contained are based on the information furnished by principals and sources which we deem reliable but for which we can assume no responsibility. Lennard Commercial Realty, Brokerage.

Lennard:

Joseph Wise*, Executive Vice President
416.649.5909
jwise@lennard.com

200-55 University Avenue, Toronto
416.649.5920
lennard.com

*Sales Representative

Statements and information contained are based on the information furnished by principals and sources which we deem reliable but for which we can assume no responsibility. Lennard Commercial Realty, Brokerage.