



For Lease: Office

885 Don Mills Road

Modern Office Space For Lease in the Heart of Don Mills

Lennard: 200-55 University Avenue, Toronto
416.649.5920

lennard.com

885 Don Mills Road

Spacious modern offices available for lease at Eglinton Avenue E and Don Mills Road



Available Suites

Suite 110: 1,377 SF

~~Suite 200: 1,078 SF~~ *Leased!*

Suite 202: 5,197 SF

Suite 206-207: 2,786 SF

Suite 208: 2,029 SF

Suite 224: 964 SF



Asking Net Rent

\$15.00 PSF

Property Taxes

\$13.80 PSF (2025)



Parking

Free surface parking at a ratio of 3 stalls per 1,000 SF



Possession

Immediate

Term

Up to 5 Years



Listing Agents

Will Angus**

Vice President

416.451.9048

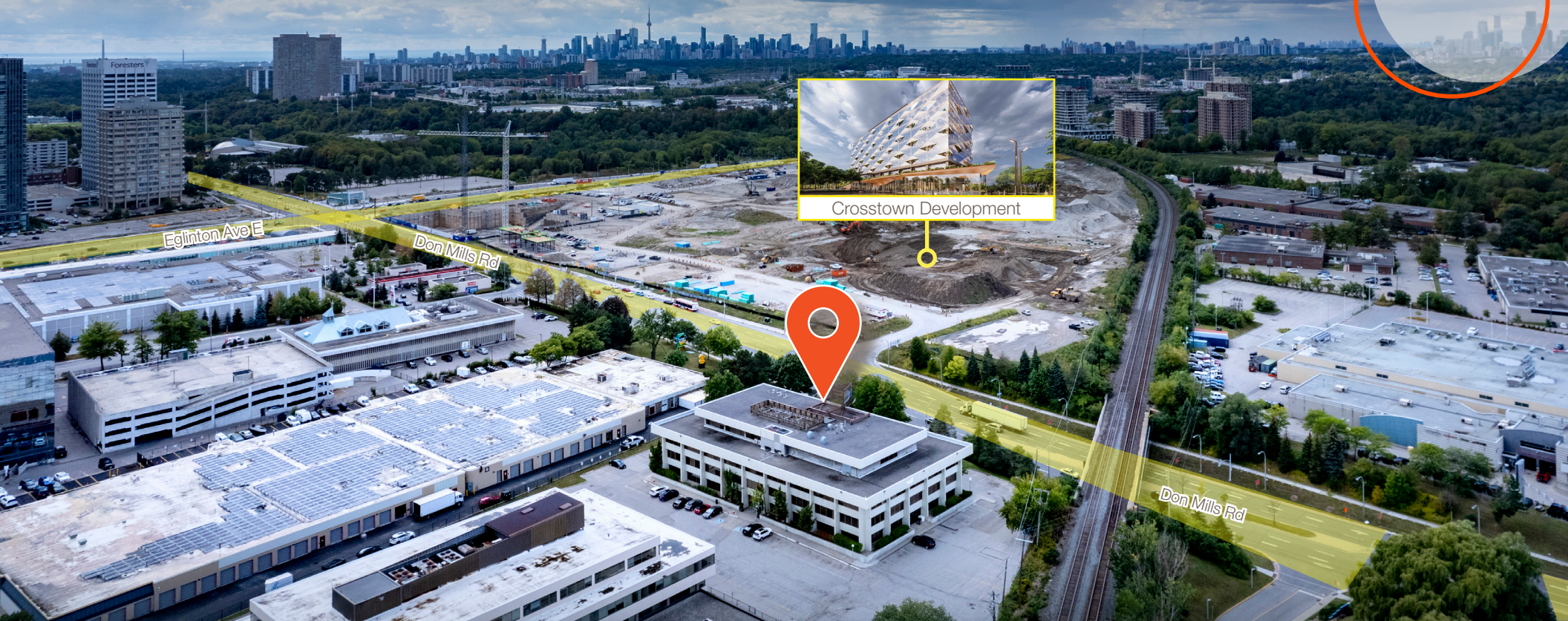
will.angus@lennard.com

*Sales Representative **Broker

Property Highlights

- Bus stops and future Eglinton LRT only steps away
- 5 minute drive to numerous restaurants
- Free surface parking available
- Easy access to DVP, 404, 401 & Gardiner

885 Don Mills Road



Quality Landlord

The Building benefits from a dedicated on site property manager which allows the tenant to get faster responses to any questions or concerns they may have.

Access to Natural Light

Access to natural light increases productivity and improves the well-being of your employees. The modern concept glass offices at 885 Don Mills Road will contribute to a bright, lively, and productive office environment.

Amenities in the Area

Proximity to food options can help improve productivity and cut down on wasted transit time during the day. 885 Don Mills offers a variety of options including the Canadian Superstore just down the street and the Shops at Don Mills up at Lawrence where there is no shortage of both quick serve and health-conscious choices.

Subway & Transit Access

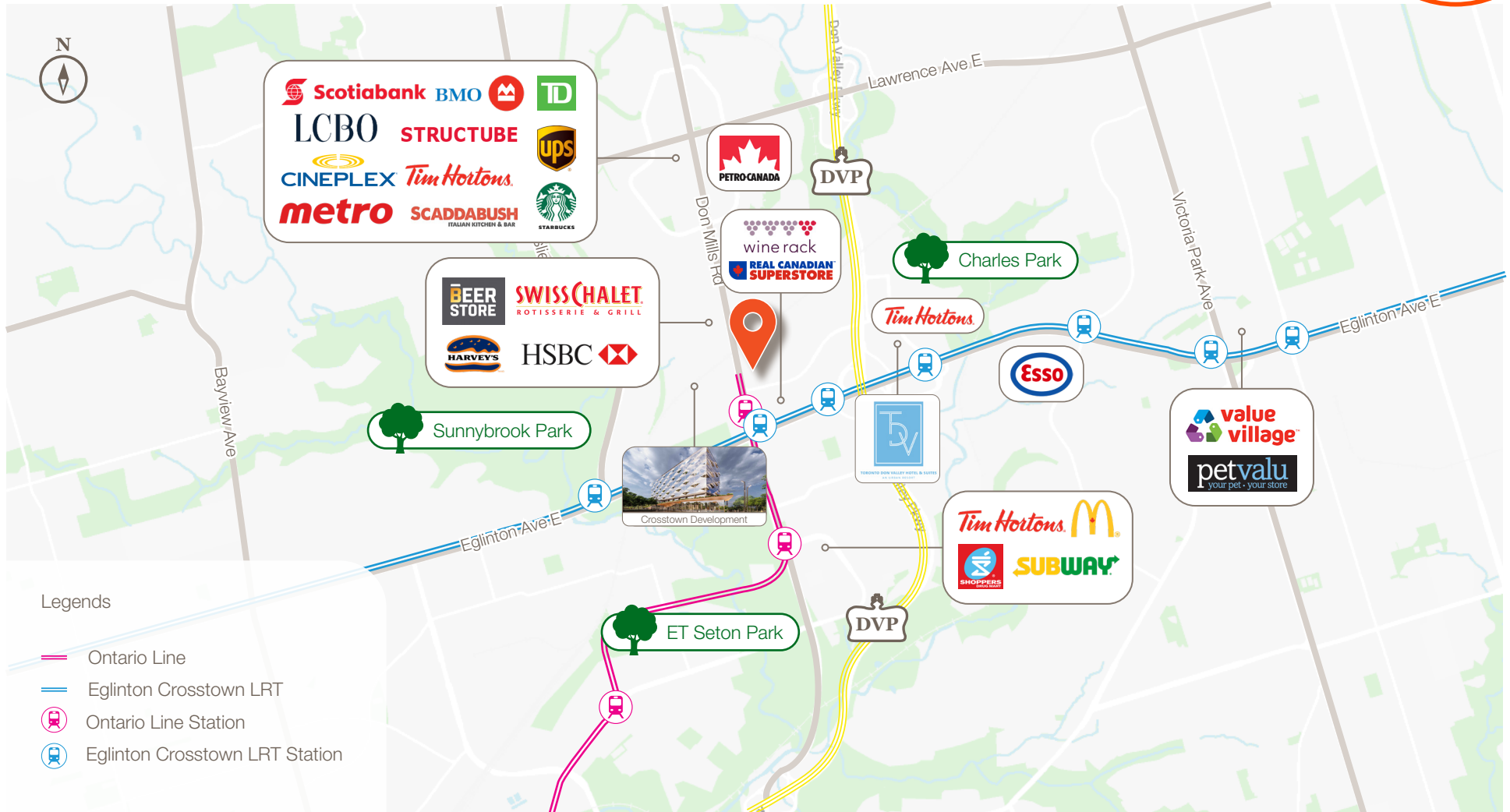
Within walking distance from the Property are numerous bus stops that lead to Don Mills Subway Station to the North and Pape Subway Station to the South. Don Mills & Eglinton will also be home to a future Eglinton LRT station which will provide convenient East/West service.

Lennard:

lennard.com

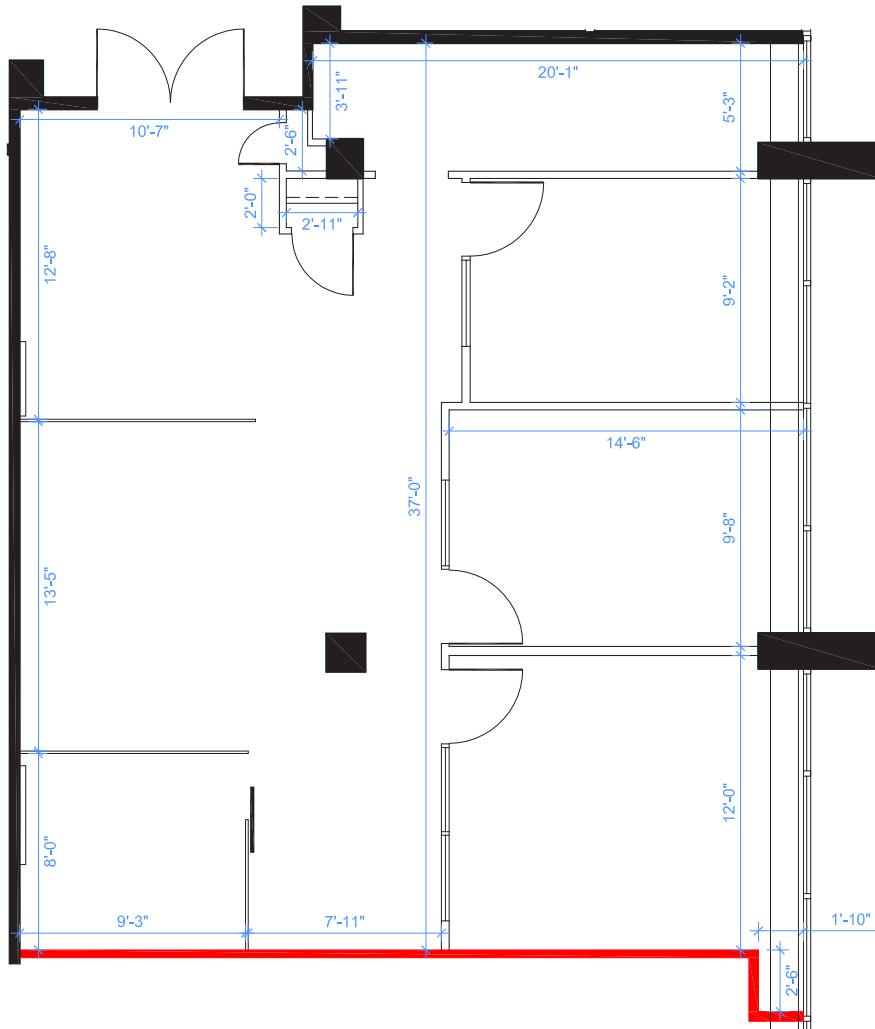
885 Don Mills Road

Amenities Map

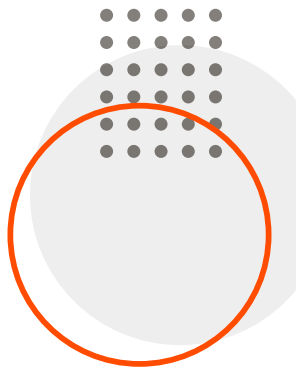
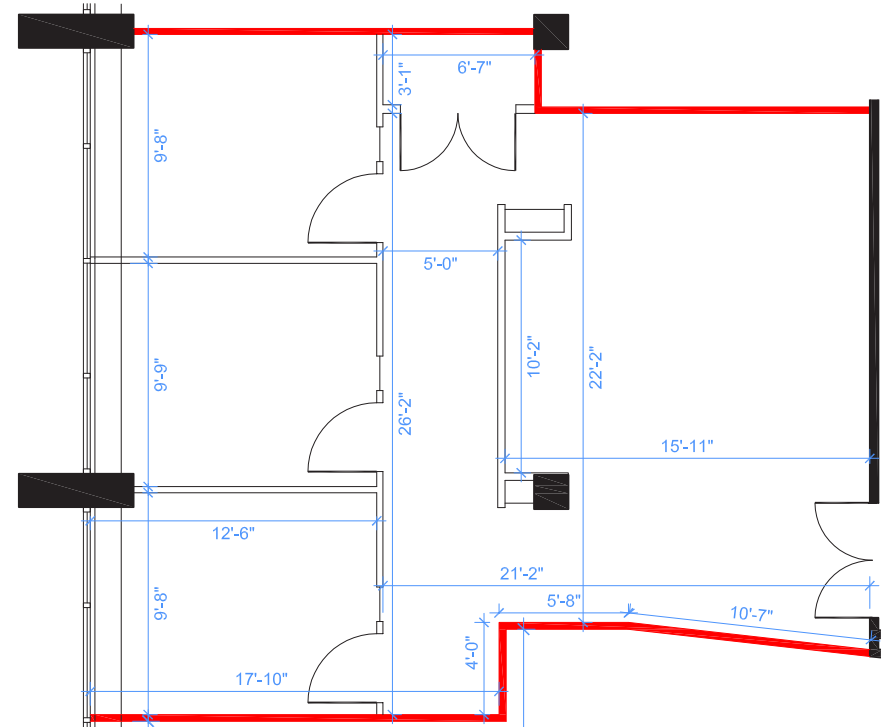


885 Don Mills Road

Suite 110
1,377 SF



Suite 200 *Leased!*
~~1,078 SF~~



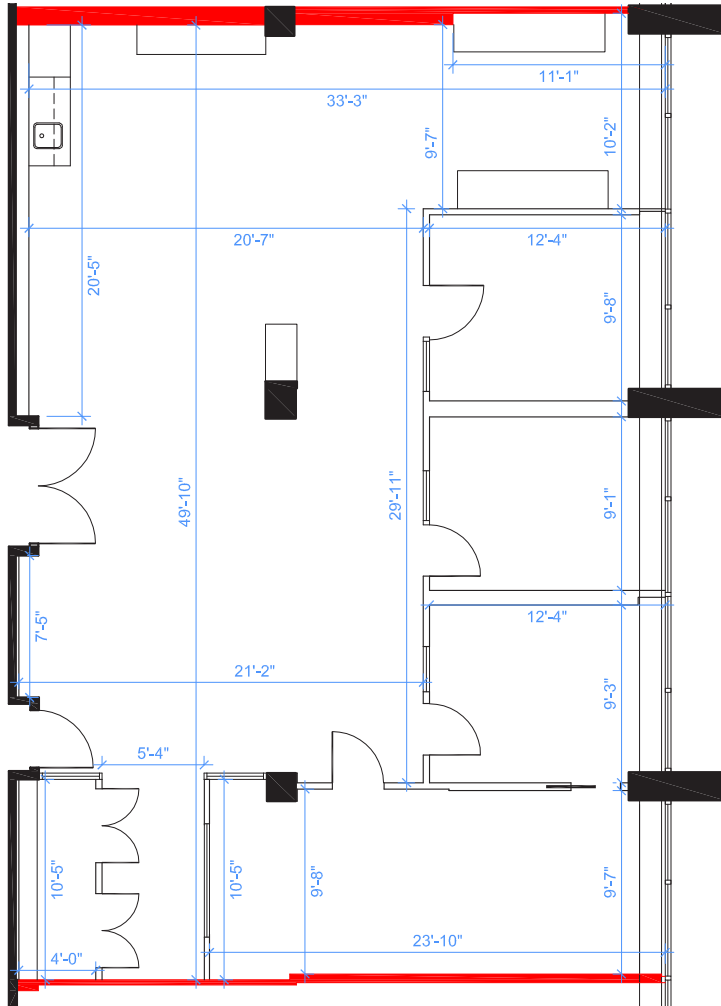
[illegible]

Architectural floor plan of a room with dimensions and labels. The plan shows a central rectangular area with a door on the right side. To the left of the central area is a smaller rectangular area labeled "ELEC." and "TEL." with a door on the left side. The dimensions are as follows:

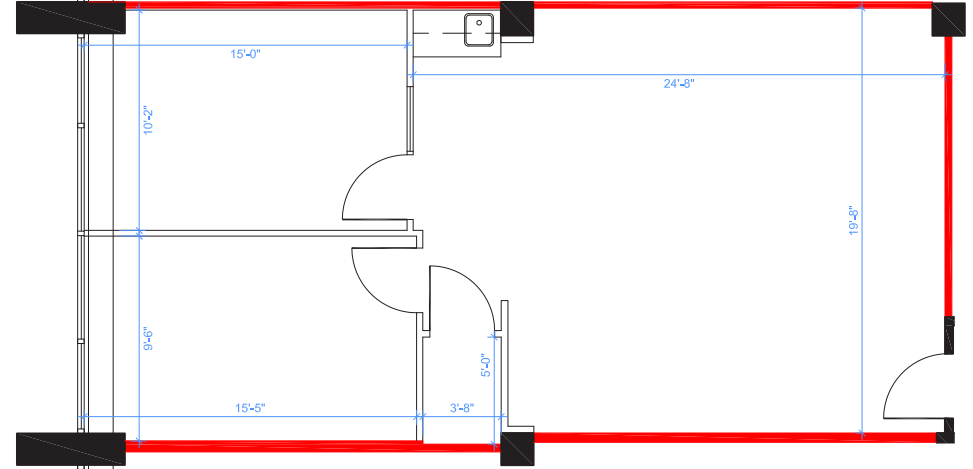
- Overall width: 16'-2"
- Overall height: 37'-6"
- Central area width: 21'-7"
- Central area height: 22'-11"
- Left area width: 10'-4"
- Left area height: 23'-2"
- Right area width: 10'-10"
- Right area height: 20'-9"
- Bottom area width: 19'-3"
- Bottom area height: 10'-8"
- Bottom area width: 9'-5"
- Bottom area height: 10'-3"
- Bottom area width: 8'-7"
- Bottom area height: 18'-0"
- Central area width: 18'-2"
- Central area height: 8'-9"
- Central area width: 4'-11"
- Central area height: 4'-11"
- Central area width: 39'-7"
- Central area height: 10'-8"
- Central area width: 10'-3"
- Central area height: 8'-7"
- Central area width: 10'-8"
- Central area height: 10'-3"
- Central area width: 8'-7"
- Central area height: 18'-0"
- Central area width: 10'-3"
- Central area height: 8'-7"
- Central area width: 8'-7"
- Central area height: 18'-0"

885 Don Mills Road

Suite 208
2,029 SF



Suite 224
964 SF



885 Don Mills Road





For Lease: Office

885 Don Mills
Road

Lennard:

Will Angus**, Vice President
416.451.9048
will.angus@lennard.com

200-55 University Avenue, Toronto
416.649.5920
lennard.com

*Sales Representative **Broker

Statements and information contained are based on the information furnished by principals and sources which we deem reliable but for which we can assume no responsibility. Lennard Commercial Realty, Brokerage.