



For Lease: Retail/Showroom - 2,075 SF

870-872 James Street
Hawkesbury, ON

Lennard: Imagine the *Possibilities*.

lennard.com

868 James Street, Hawkesbury

Retail/showroom available for lease in Hawkesbury, ON.



Size
2,075 SF



Parking
Ample Parking On-site



Net Rent
\$3,000 Per Month
all inclusive, including heat
and hydro



Availability
January 1, 2026



Listing Agent
Ian Shackell*

Partner

D. 613.963.2633
ishackell@lennard.com

Matt Shackell*

Vice President

D. 613.963.2636
mshackell@lennard.com

Brent Heeney

Sales Representative

D. 613-963-2631
bheeney@lennard.com

*Sales Representative

Property Highlights

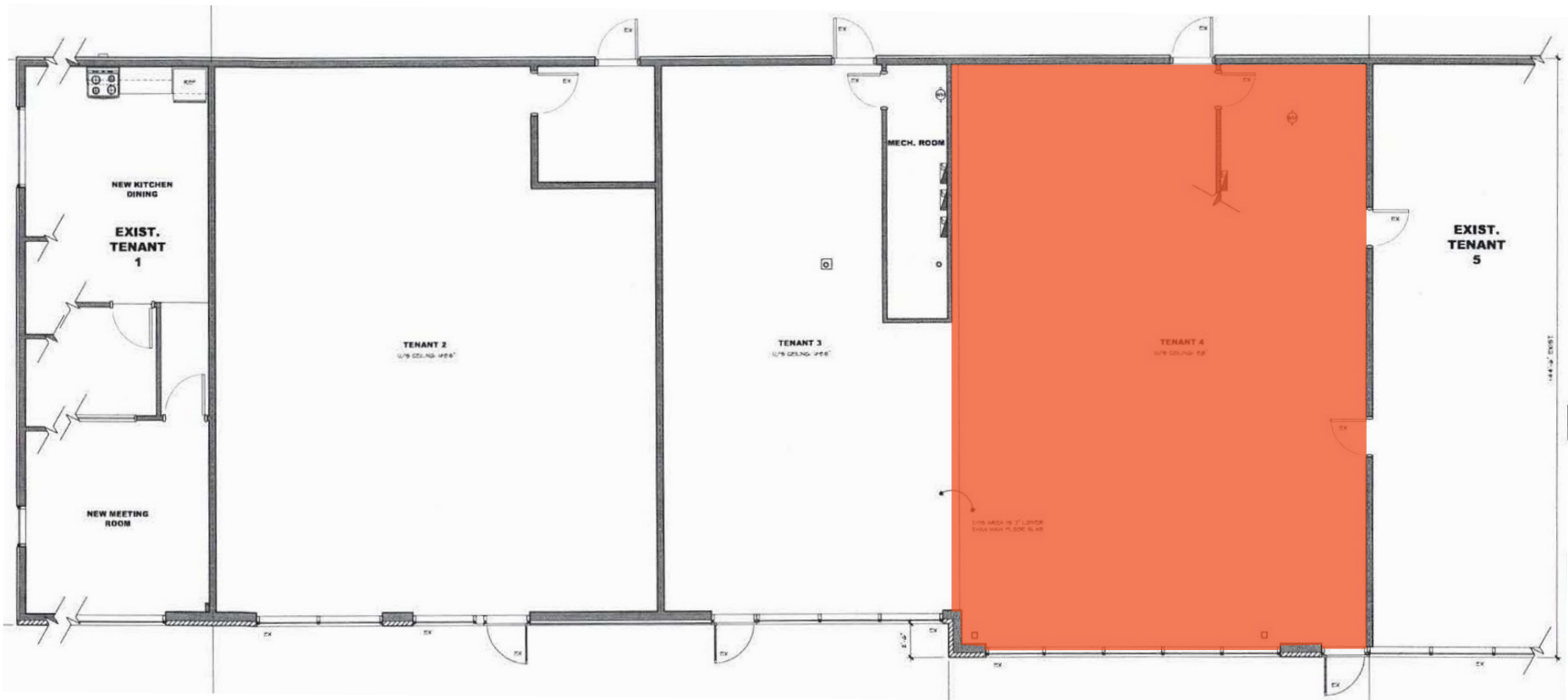
- Located in the west end of Hawkesbury.
- Currently built-out open concept retail showroom.
- In walking distance to shops, restaurants and other amenities.
- Building signage above the unit.
- Close access to County Road 17 at McGill Street.
- Directly behind KFC, Spence Street at James Street.
- Ideal for many retail and showroom users.
- Newly painted exterior for the whole plaza.

Lennard:

lennard.com

868 James Street, Hawkesbury

Site Plan



868 James Street, Hawkesbury

Location Map



Lennard:

Ian Shackell*, Partner

D. 613.963.2633

C. 613.761.0177

ishackell@lennard.com

Matt Shackell*, Vice President

D. 613.963.2636

C. 613.612.8812

mshackell@lennard.com

Brent Heeney, Sales Representative

D. 613.963.2631

bheeney@lennard.com

333 Preston Street, Suite 420

Ottawa, ON K1S 5N4

613.963.2640

lennard.com

*Sales Representative

Statements and information contained are based on the information furnished by principals and sources which we deem reliable but for which we can assume no responsibility. Lennard Commercial Realty, Brokerage.