



For Sublease: Industrial

85 Bentley Avenue

Over 30,000K SF Industrial Building for Sub Lease in Ottawa, Ontario

Lennard: Imagine the *Possibilities*.

lennard.com

85 Bentley Avenue

Over 30,000K SF Industrial Building for Sub Lease in Ottawa, Ontario



Land Size

30,158 SF



Zoning

IH

Heavy Industrial



Price

Contact Listing Agent



Availability

Immediate



Sub Lease Expiry

December 31, 2026



Listing Agent

Ian Shackell*

Partner

D. 613.963.2633

C. 613.761.0177

ishackell@lennard.com

Matt Shackell*

Vice President

D. 613.963.2636

C. 613.612.8812

mshackell@lennard.com

*Sales Representative

Property Highlights

- Two dock loading doors, with potential to convert one into a drive-in door
- 16-foot clear height throughout the entire building
- Front showroom with four private offices
- Two washrooms (male and female)
- Ample on-site parking for trucks and employees
- Fully sprinklered building
- Available immediately
- Competitive net rental rates

Lennard:

lennard.com

85 Bentley Avenue

Pictures



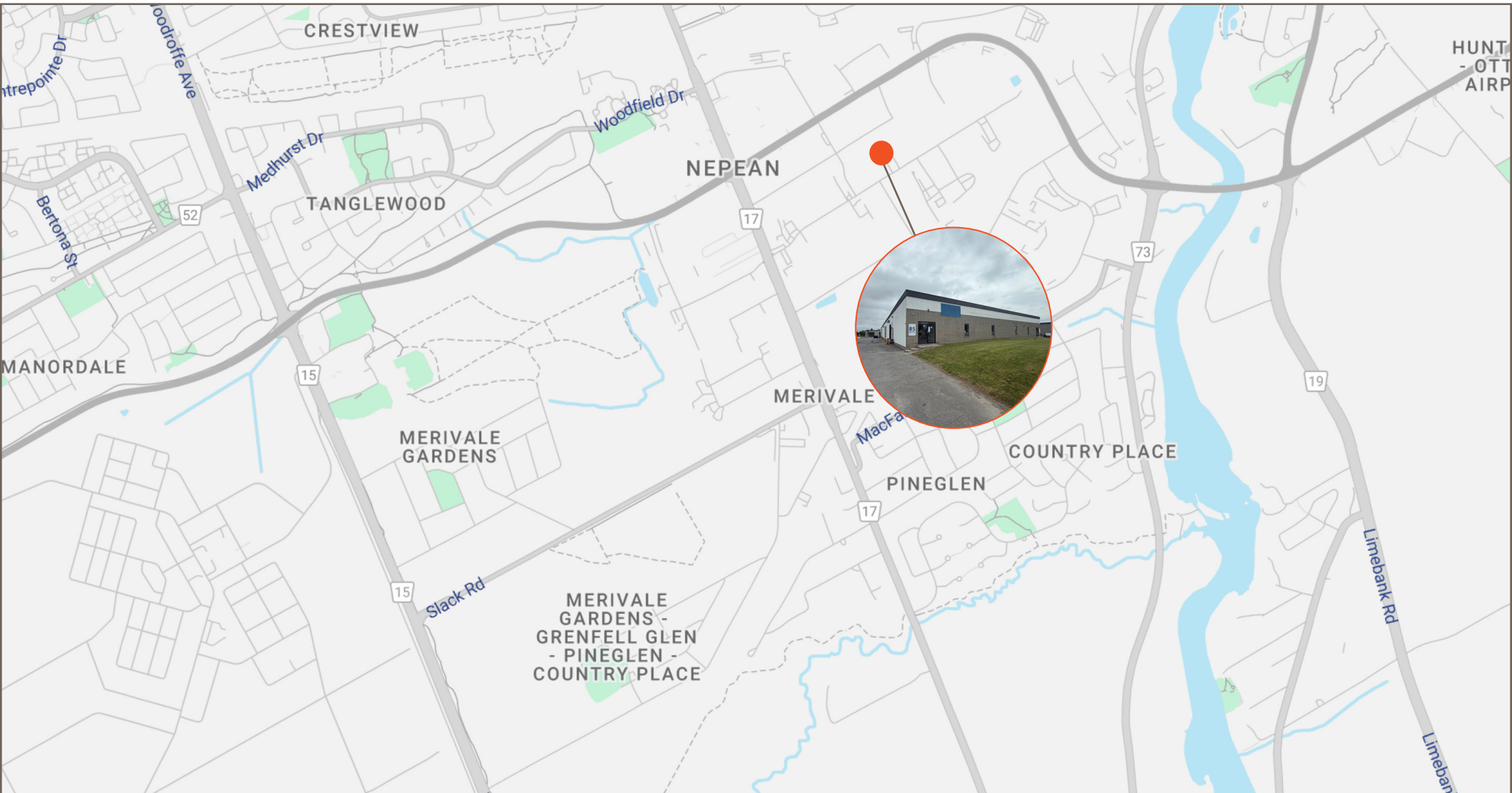
*A bright future
for your business
is right here.*

Lennard:

lennard.com

85 Bentley Avenue

Location Map



Lennard:

lennard.com

Lennard:

Ian Shackell*, Partner

D. 613.963.2633

C. 613.761.0177

ishackell@lennard.com

Matt Shackell*, Vice President

D. 613.963.2636

C. 613.612.8812

mshackell@lennard.com

333 Preston Street, Suite 420

Ottawa, ON K1S 5N4

613.963.2640

lennard.com

*Sales Representative

Statements and information contained are based on the information furnished by principals and sources which we deem reliable but for which we can assume no responsibility. Lennard Commercial Realty, Brokerage 2023.