



For Sublease: Industrial

655 St Lawrence Street, Winchester, ON

5,000 SF industrial building for lease south of Ottawa.

Lennard:

Here is where your business will *grow*.

lennard.com

655 St Lawrence Street, Winchester, ON



Size
5,000 SF



Zoning
C - Commercial Zone



Net Rent:
\$12.00 PSF



Available:
Immediate



Listing Agents
Ian Shackell*
Partner
613.963.2633
ishackell@lennard.com

Matt Shackell*
Vice President
613.963.2636
mshackell@lennard.com

*Sales Representative

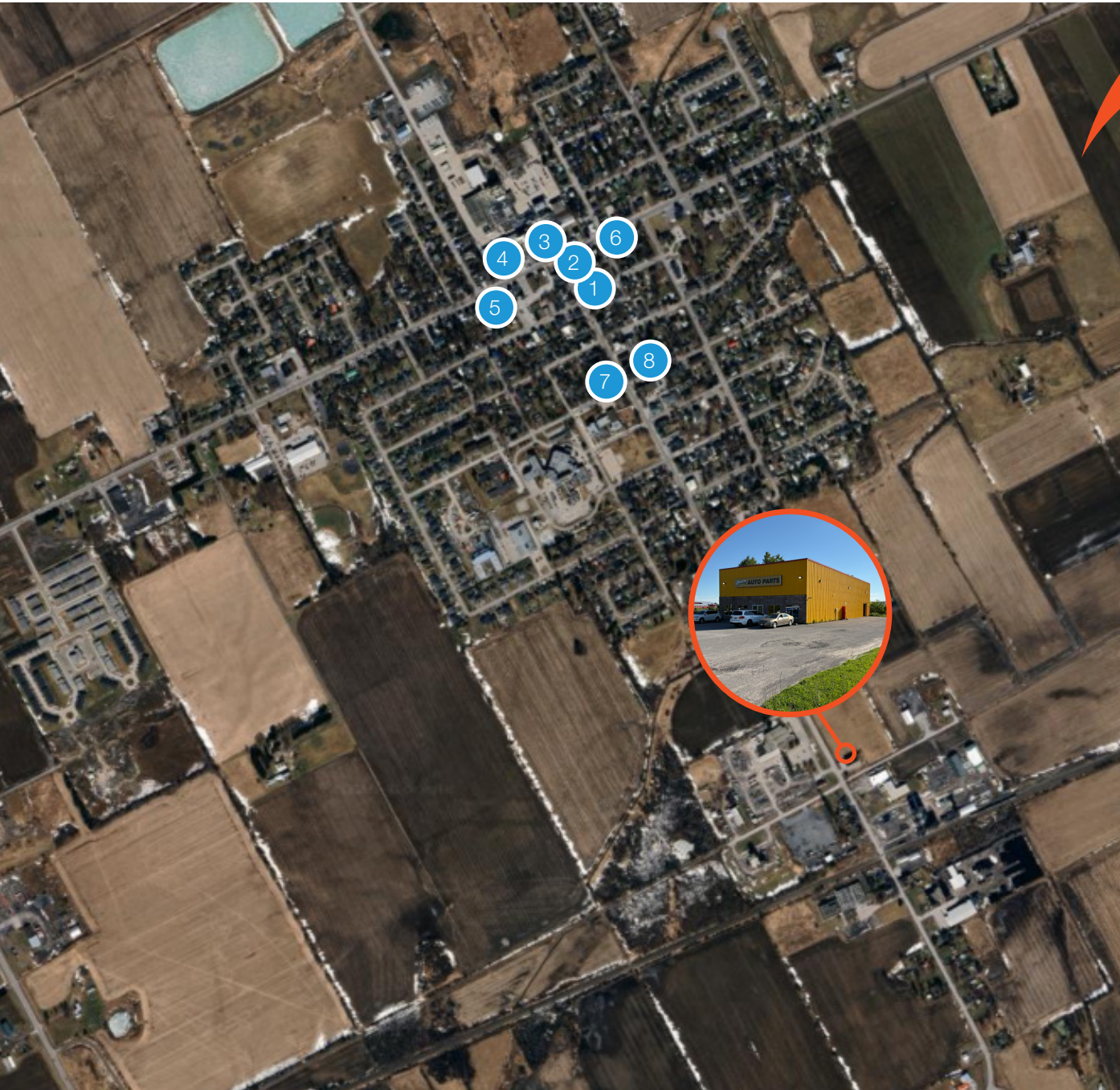
Property Highlights:

- Sublet expires October 25, 2035
- 5,000 SF industrial building available with 1,000 SF of mezzanine port concrete for storage
- 1 drive-in loading door
- Located 1 hour from Ottawa

655 St Lawrence Street, Winchester, ON



655 St Lawrence Street, Winchester, ON



Amenities Map

Amenities

- 1 Mary's
- 2 Shawarma Time
- 3 Iron Forge Pizza
- 4 Milano Pizzeria
- 5 Mr. Mozzarella
- 6 RBC Royal Bank
- 7 Circle K
- 8 Winchester IDA

Ian Shackell*
Partner
613.963.2633
ishackell@lennard.com

Matt Shackell*
Vice President
613.963.2636
mshackell@lennard.com

Lennard:

420-333 Preston Street, Ottawa
613.963.2640
lennard.com

*Sales Representative **Broker

Statements and information contained are based on the information furnished by principals and sources which we deem reliable but for which we can assume no responsibility. Lennard Commercial Realty, Brokerage.