

600

Cochrane Drive



Exceptional 4,905 SF Unit in Class A Office Building  
For Sublease in Markham

**Lennard:**

[lennard.com](http://lennard.com)

# Sublease Opportunity

600 Cochrane Drive is a Class A Office Building Located at Highway 7 and Woodbine Avenue in Markham.



Available Area  
**Unit 205: 4,905 SF**



Zoning  
**EMP - BP**



Possession Date  
**August 1st, 2026**



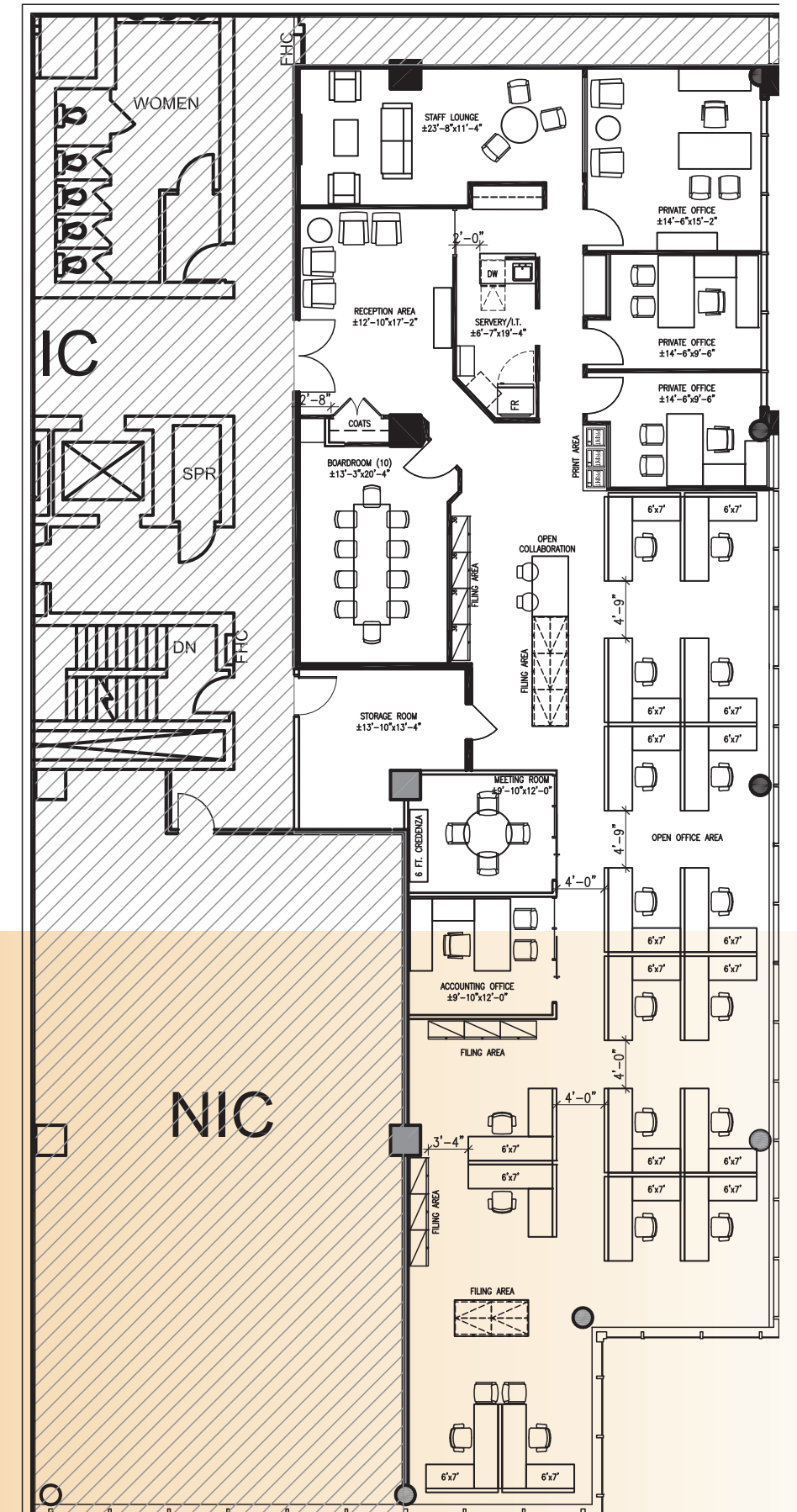
Lease Rate  
**Call to Inquire**

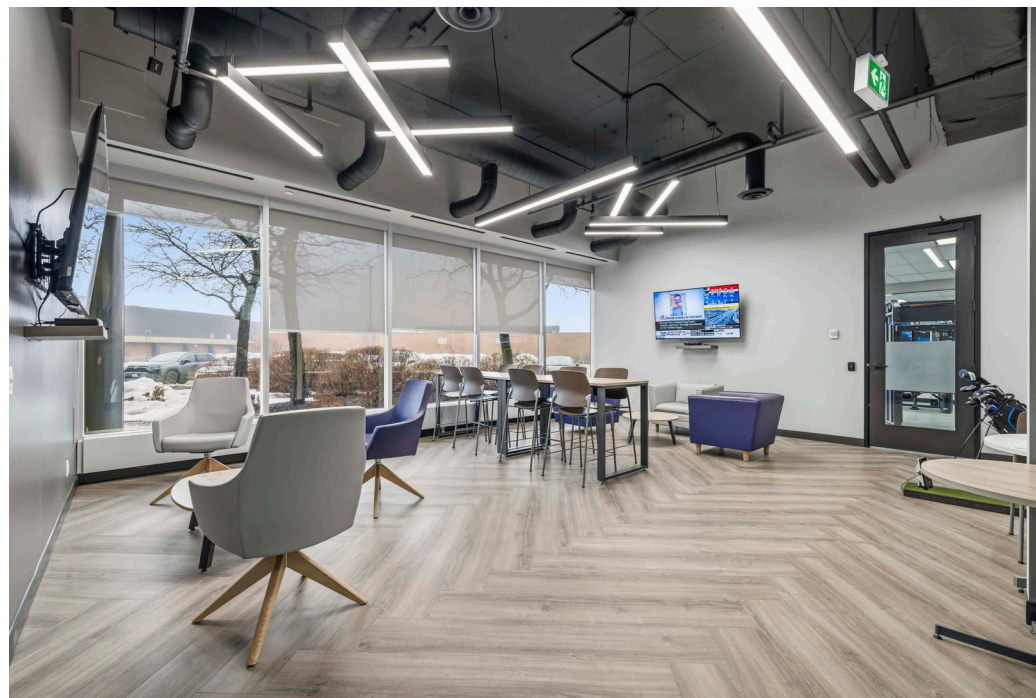


Sub-Lease Term Expiry  
**March 31, 2030**

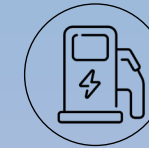
T&O (2026)  
**\$18.11 PSF**

- True plug and play opportunity with high-end finishes.
- Built out with 5-6 offices/meeting rooms, kitchen, reception area, boardroom, and open area.
- Furniture can potentially be made available.
- Excellent access to Highways 7, 407, and 404.
- Amenities in the building include a cafe, lounge, and fitness centre.

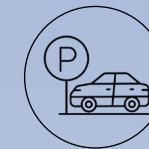




Leed Platinum Certified Existing Building



Electric Car Charging Station



4/1000 Parking



Lounge



Fitness Center



Golf Simulator



Hwy 7

2 Mins

Hwy 407

3 Mins

Hwy 404

4 Mins



12 Mins



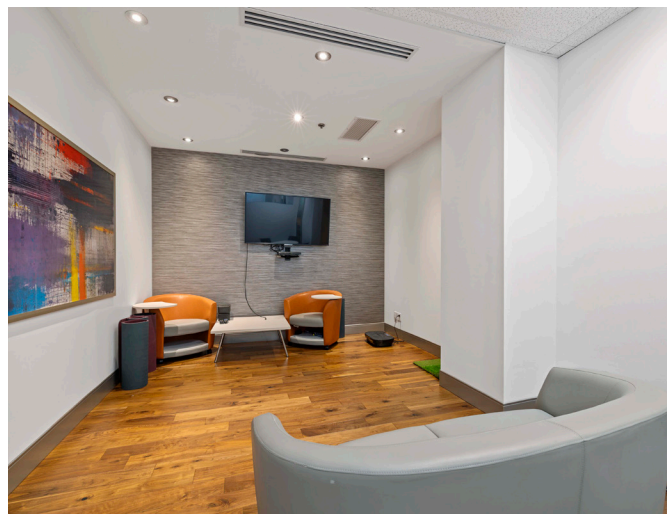
22 Mins

Downtown Toronto

30 Mins



600 Cochrane Drive







## **Lennard:**

201-60 Columbia Way, Markham

905.752.2220

[lennard.com](http://lennard.com)

**Ken Karulas\***  
Executive Vice President  
905.489.0711  
[kkarulas@lennard.com](mailto:kkarulas@lennard.com)

**Karen Karulas**  
Sales Representative  
416.871.4050  
[karen.karulas@lennard.com](mailto:karen.karulas@lennard.com)

\*Sales Representative

Statements and information contained herein are based on information furnished by principals and sources we deem reliable; however, we make no representation or warranty as to the accuracy, completeness or current status of such information and assume no responsibility for any errors, omissions, or misstatements. All information should be independently verified by the recipient. Lennard Commercial Realty, Brokerage.