



For Sublease: Office

[Click here for  
Virtual Tour!](#)

# 571 Adelaide Street E

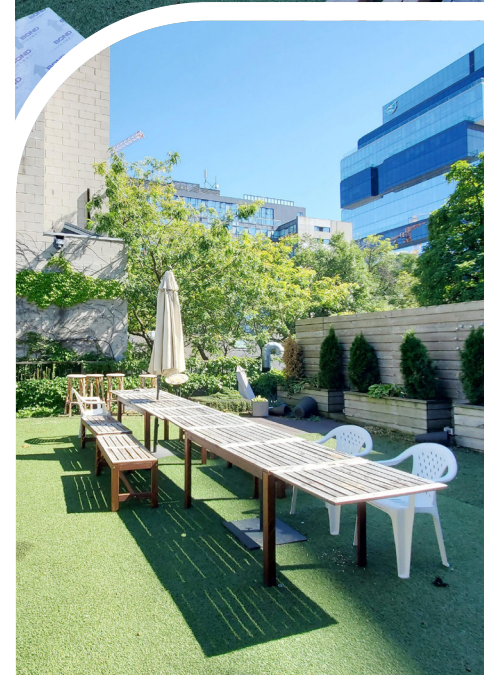
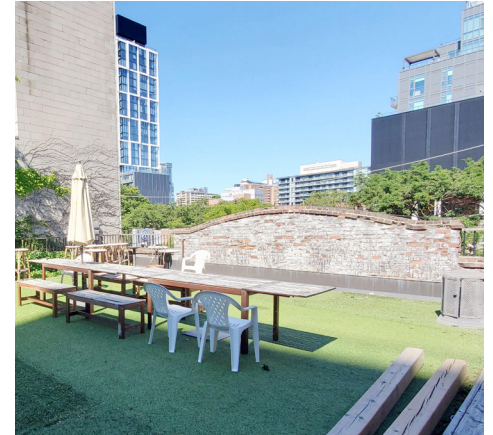
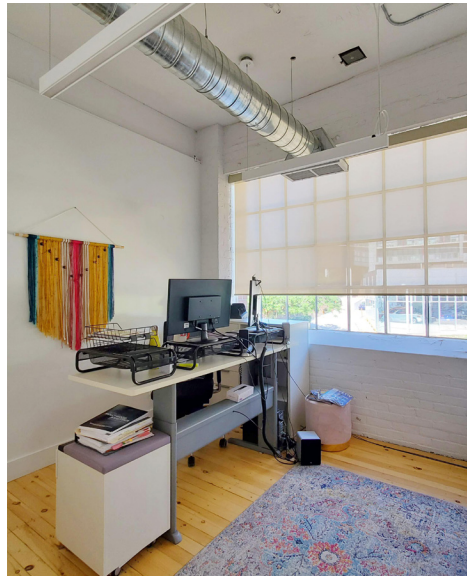
Executive Office Space with Private Rooftop Balcony

**Lennard:** Here is where your business will *grow*.

[lennard.com](http://lennard.com)



# 571 Adelaide Street E



# 571 Adelaide Street E



Available Space

4,150 SF



List Price

Contact Joseph Wise  
to discuss



Term

Until November 30, 2028



Availability

Flexible



Listing Agent

Joseph Wise

Executive Vice President

416.649.5909

jwise@lennard.com

Click here for  
Virtual Tour!

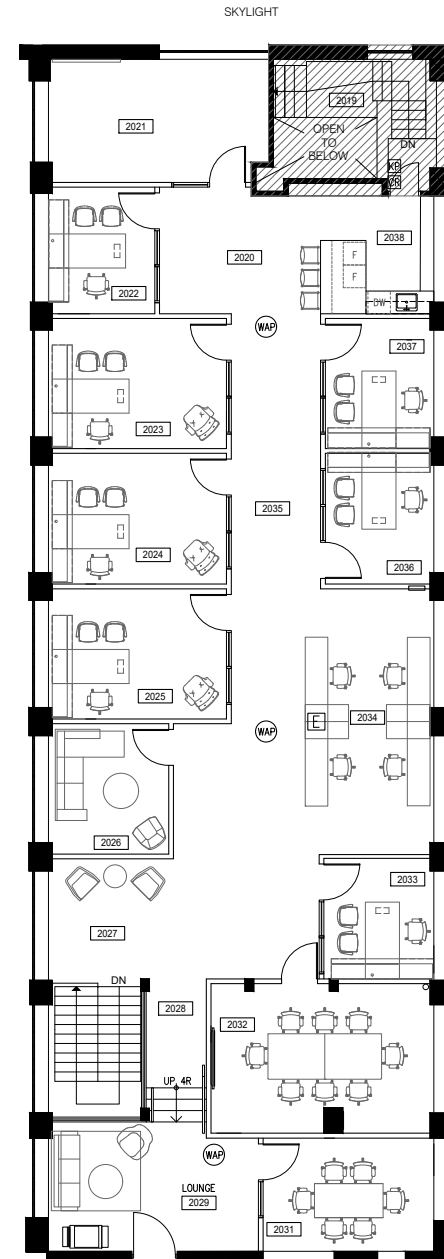
## Property Highlights

- Brick and beam space with private offices and meeting rooms
- Can be leased in tandem with 595 Adelaide Street East
- Excellent natural light



Private rooftop balcony!

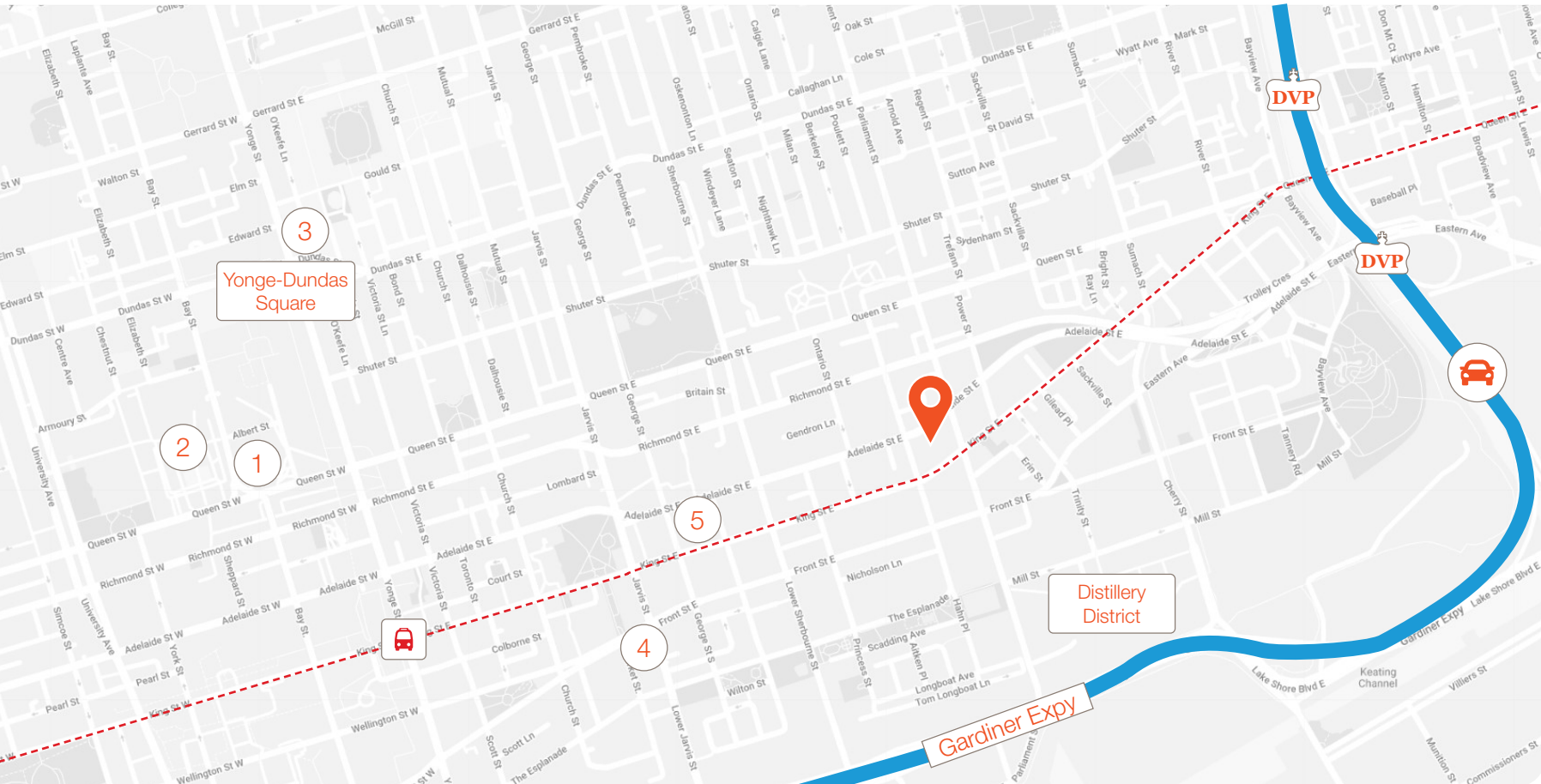
**Lennard:**



lennard.com



# 571 Adelaide Street E



To Don Valley Parkway **2 Mins • 1.5 km**

Distillery District **3 Mins • 750 m**

Yonge-Dundas Square **8 Mins • 1.8 km**



King Subway Station **7 Mins • 1.3 km**  
(TTC Line 1)

----- King Street Car Line (service every 5 minutes)



1 Toronto Old City Hall



2 Nathan Phillips Square



3 Toronto Metropolitan University



4 St. Lawrence Market



5 George Brown College

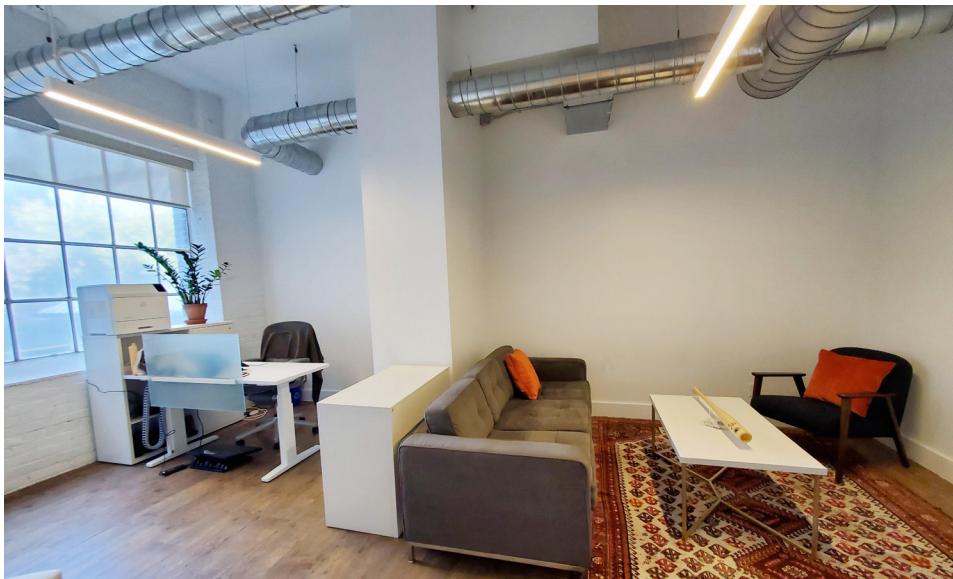
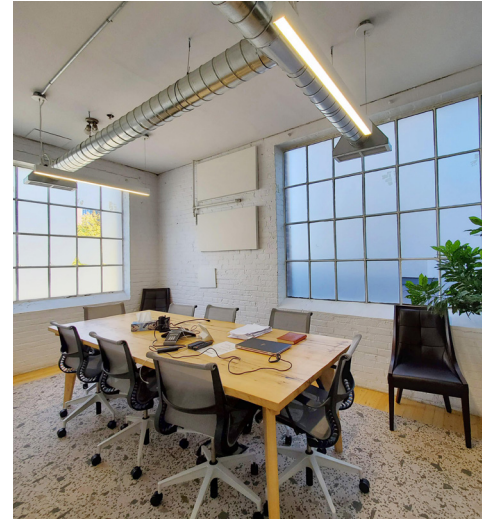
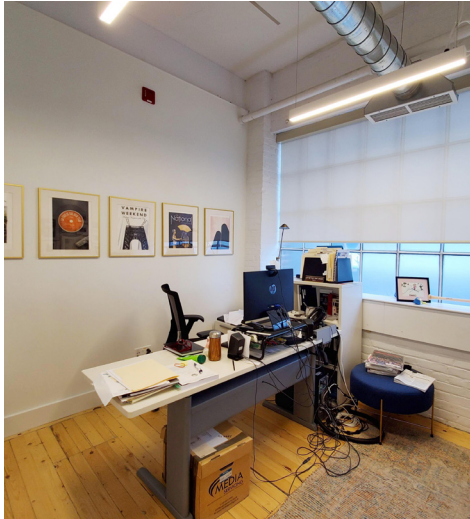


571 Adelaide Street E

**Lennard:**

[lennard.com](http://lennard.com)

# 571 Adelaide Street E



# Lennard:

Joseph Wise\*, Executive Vice President  
416.649.5909 • [jwise@lennard.com](mailto:jwise@lennard.com)

200-55 University Avenue, Toronto  
416.649.5920

[lennard.com](http://lennard.com)

Statements and information contained are based on the information furnished by principals and sources which we deem reliable but for which we can assume no responsibility. Lennard Commercial Realty, Brokerage.