



For Sublease: Office

# 5000 Dufferin Street

Fully Built 1,520 SF Office Space

**Lennard:**

Here is where your business will *grow*.

[lennard.com](http://lennard.com)

# 5000 Dufferin Street



1,520 SF office available for sublease at the northwest side of Dufferin Street and Dolomite Drive.



Suite

**205**

Available Space

**1,520 SF**



Net Rent

**\$13.45 PSF**

Additional Rent

**\$10.57 PSF**



Availability

**Immediate**



Listing Agents

**Joseph Berardi**

Sales Representative

416.649.5933

[jberardi@lennard.com](mailto:jberardi@lennard.com)

\*Sales Representative \*\*Broker

## Property Highlights

- Close to many amenities such as York University, Mandarin, Starbucks, Real Canadian Superstore and more!
- Convenient Access to TTC Stations & Downsview Park GO Station
- Turnkey space with ample office furniture perfect for accounting, law or professional services firms
- Includes a boardroom and built in kitchenette
- Ample Parking



# 5000 Dufferin Street

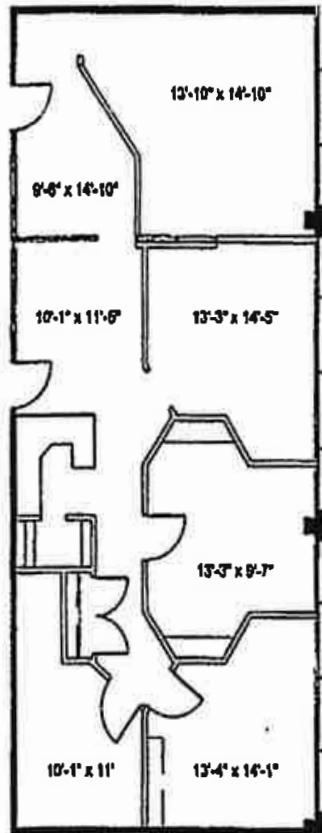


# 5000 Dufferin Street

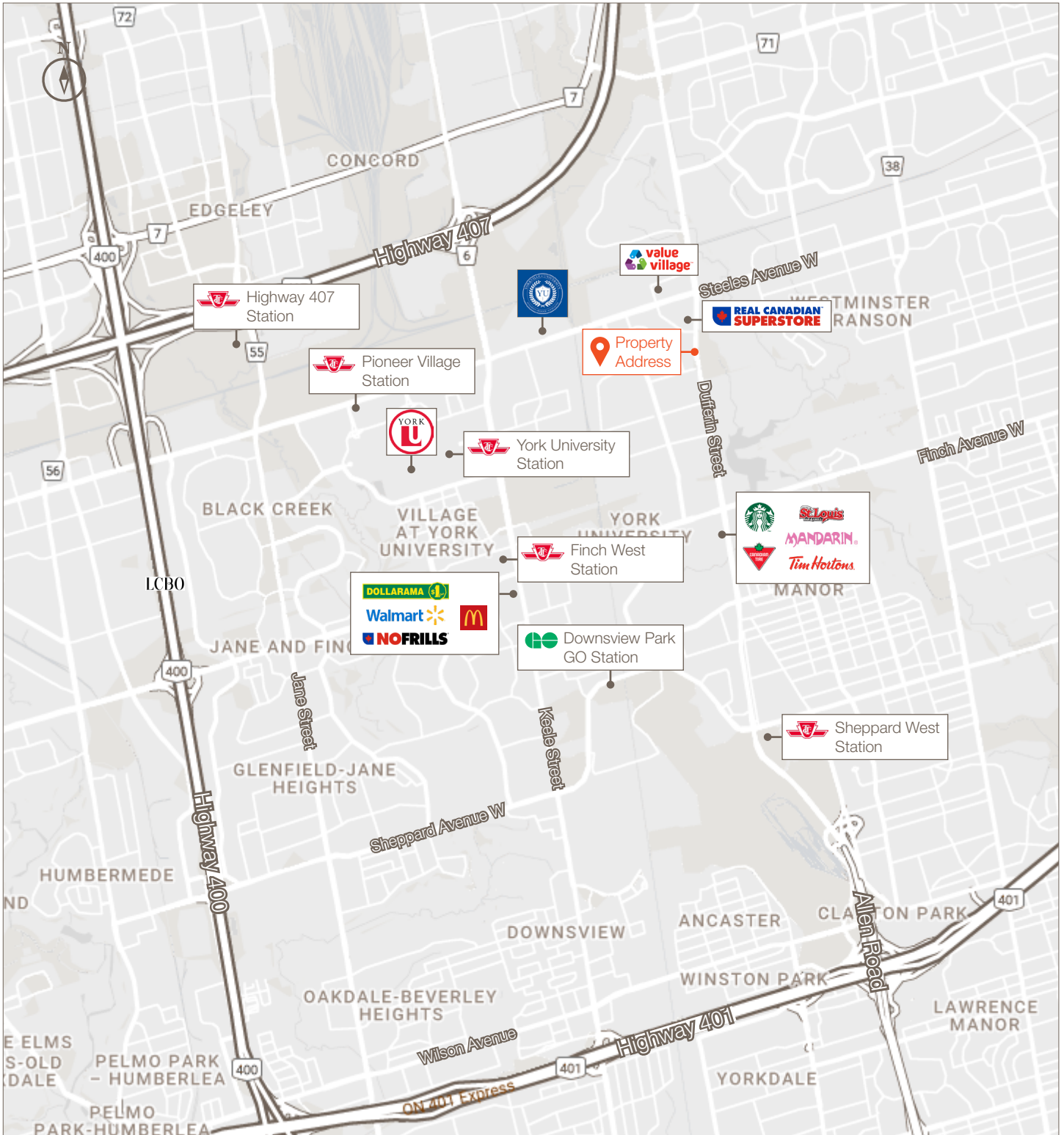


## Floor Plan

Suite 205: 1,520 SF



# 5000 Dufferin Street



# Lennard:

Joseph Berardi, Sales Representative  
416.649.5933  
[jberardi@lennard.com](mailto:jberardi@lennard.com)

200-55 University Avenue, Toronto  
416.649.5920  
[lennard.com](http://lennard.com)