



For Sublease: Industrial

Here is where
your business
will *grow*.

48-54 Carnforth Road

Outstanding 36,266 SF Industrial Space

Lennard:

Here is where your business will *grow*.

lennard.com

48-54 Carnforth Road

36,266 SF industrial warehouse available for sublease located at Central Toronto Submarket just north east of Toronto's downtown core.



Building Size

36,266 SF

Lot Size

1.82 acres

Frontage

205.24 ft

Depth

388.61 ft



Clear Height

17' 6"



Shipping

3 TL & 1 DL



Parking

30 Spaces



Pin

101290009



Zoning

**EL1 - Employment
Light Industrial**



Net Rent

\$15.95 PSF



Availability

September 10, 2025



Listing Agents

Jonathan Howard*

Vice President

905.917.2057

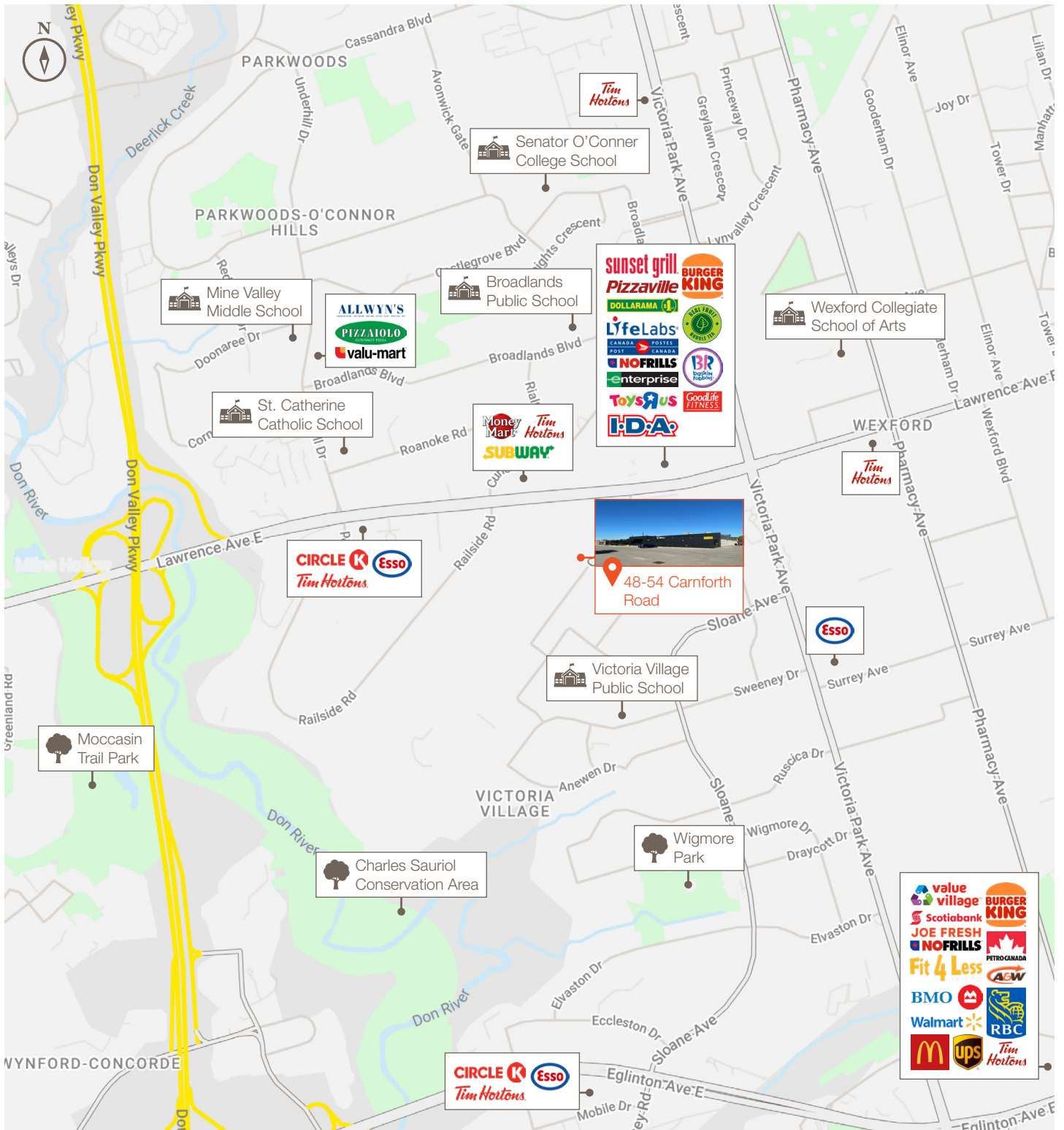
jhoward@lennard.com

*Sales Representative

Property Highlights

- The warehouse and office were recently renovated
- Under four minutes to the Don Valley Parkway
- Ten minute drive to Kennedy GO Station

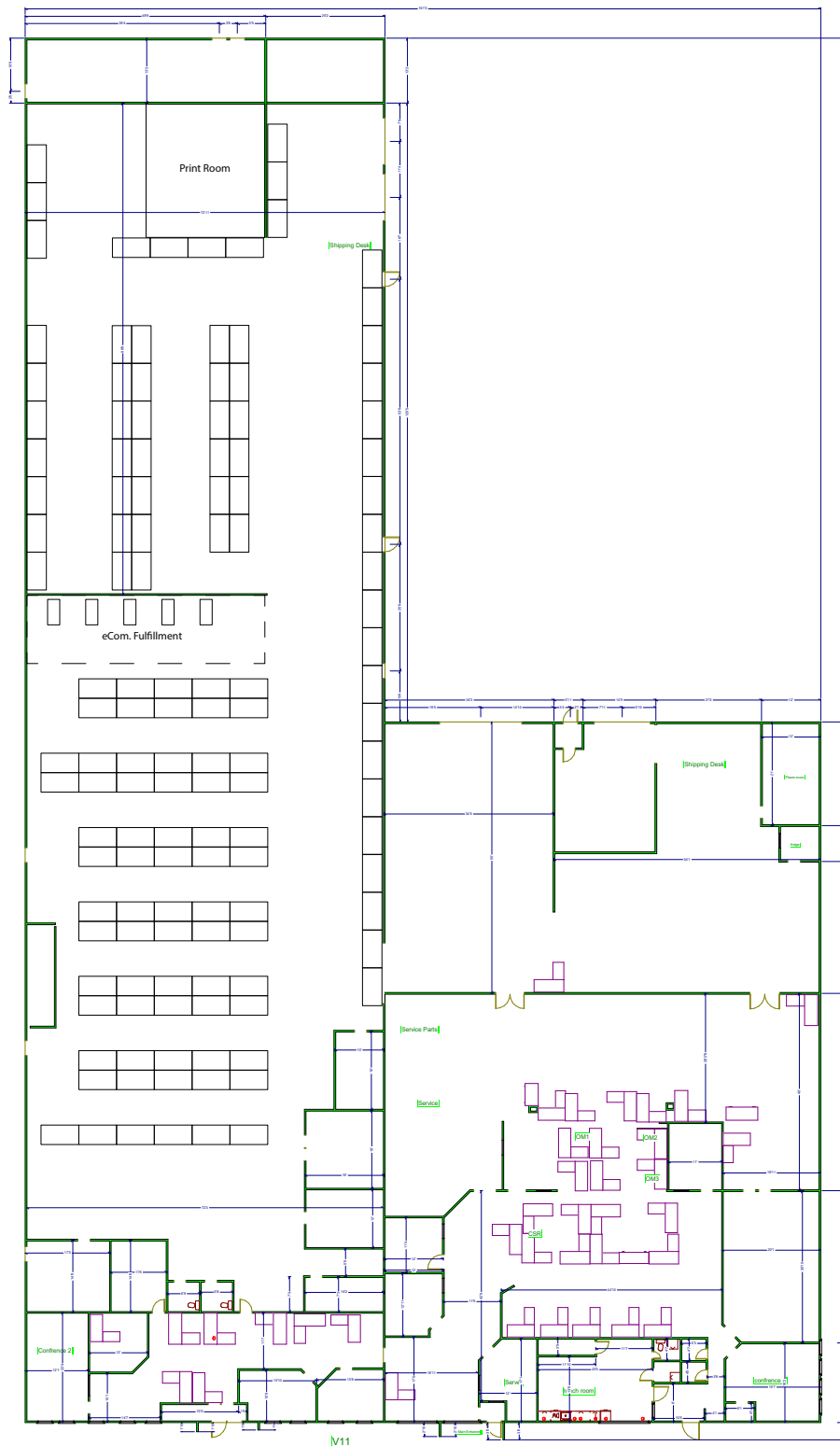
48-54 Carnforth Road



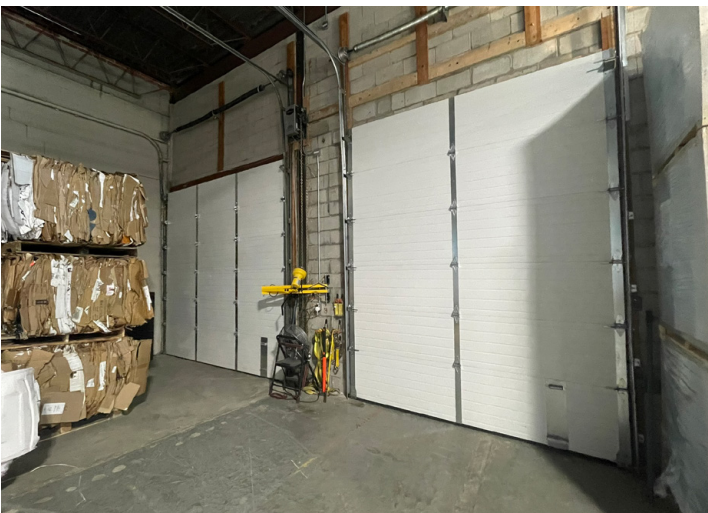
48-54 Carnforth Road

Floor Plan

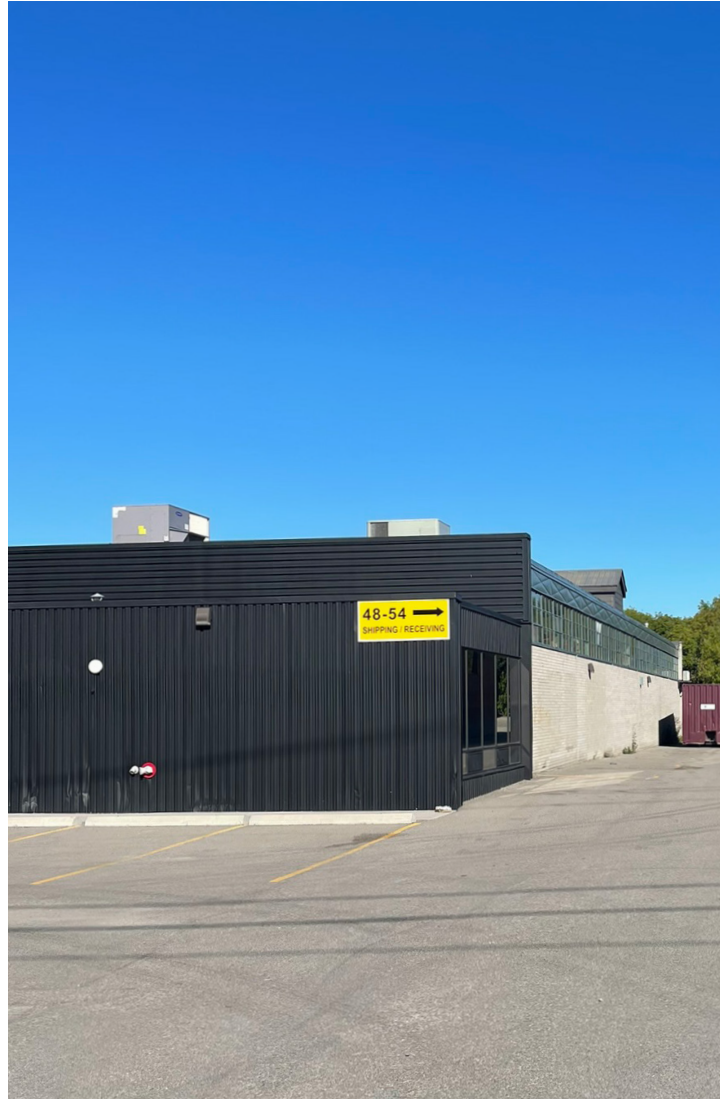
36,266 SF



48-54 Carnforth Road



48-54 Carnforth Road



*A bright future
for your business
is right here.*

Lennard:

Jonathan Howard*
Vice President
905.917.2057
jhoward@lennard.com

209-1 Yorkdale Road, Toronto
905.752.2220
lennard.com

*Sales Representative **Broker

Statements and information contained are based on the information furnished by principals and sources which we deem reliable but for which we can assume no responsibility. Lennard Commercial Realty, Brokerage.