

For Lease: Office

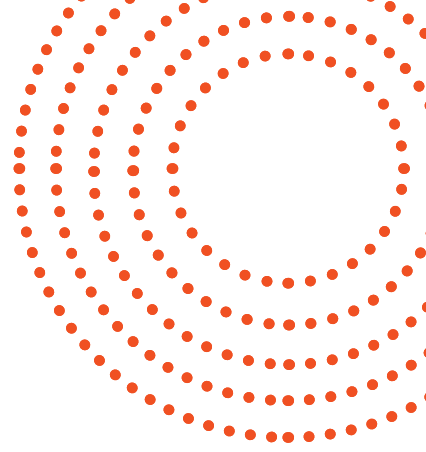
4576 Yonge Street

Toronto, ON —————



Lennard:

4576 Yonge Street



Suite 200

14,114 SF

Suite 300

10,847 SF

Suite 400

1,569 SF

Suite 606

1,622 SF



Net Rent

\$16.50 PSF

Additional Rent

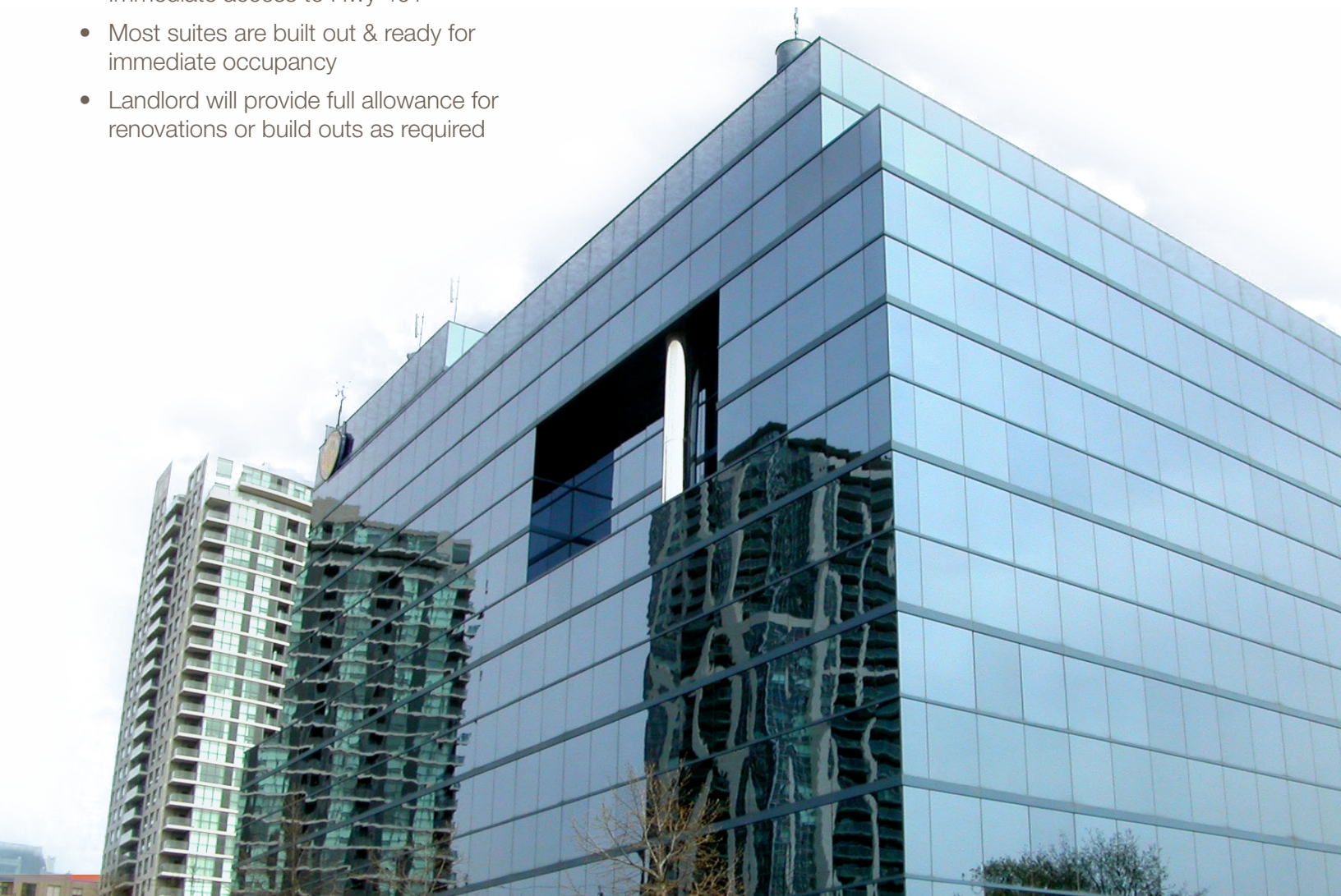
\$21.36 PSF



Full Turnkey solutions or
construction allowances
available as needed

Property Highlights

- Parking Ratio: 1.5 / 1,000 SF
(All underground)
- Immediate access to Hwy 401
- Most suites are built out & ready for
immediate occupancy
- Landlord will provide full allowance for
renovations or build outs as required



Floor Plans

2nd Floor

Suite

200

14,114 SF

Net Rent

\$16.50 PSF

Additional Rent

\$21.36 PSF

Available
August 2025



Floor Plans

3rd Floor

Suite

300

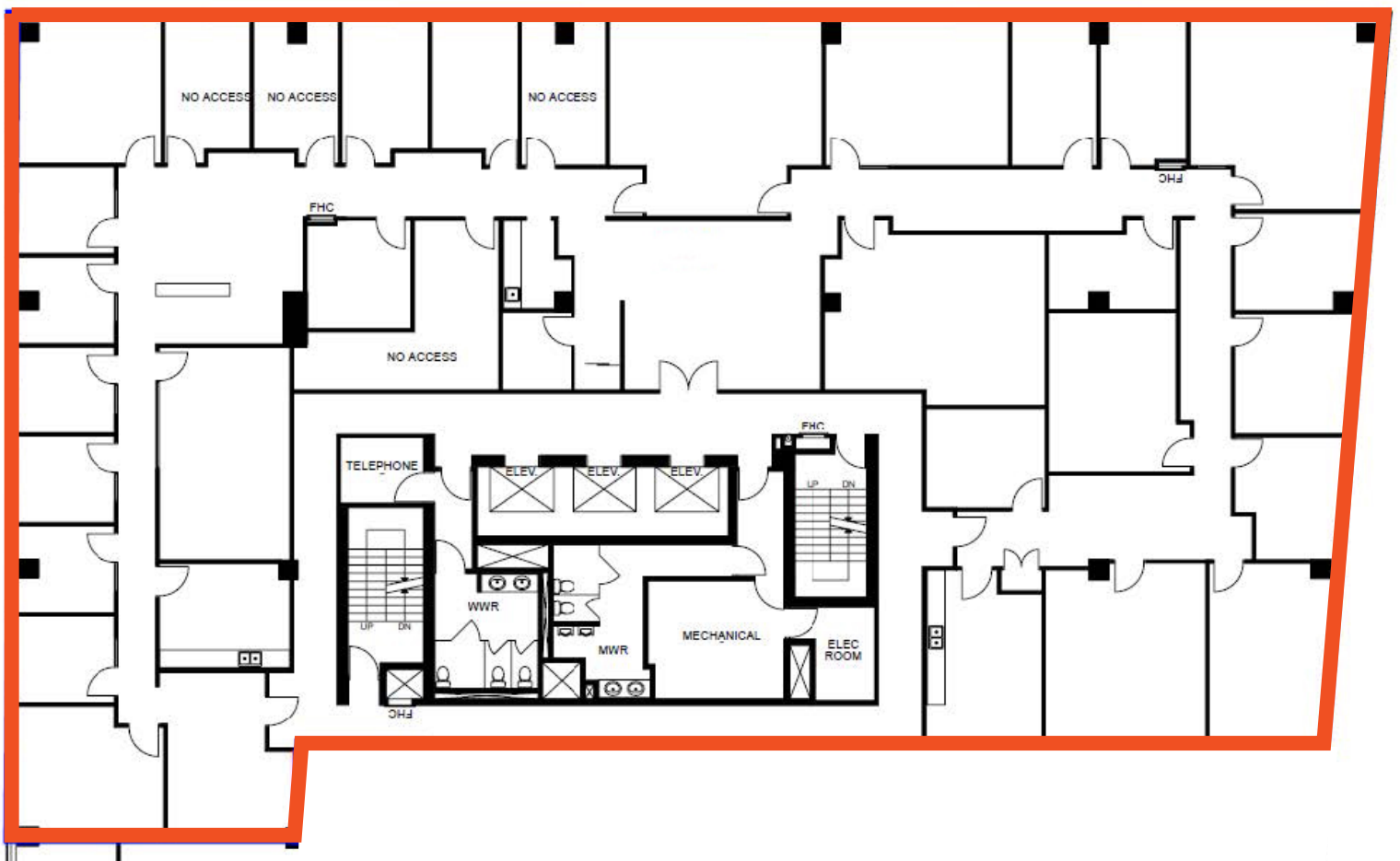
10,847 SF

Net Rent

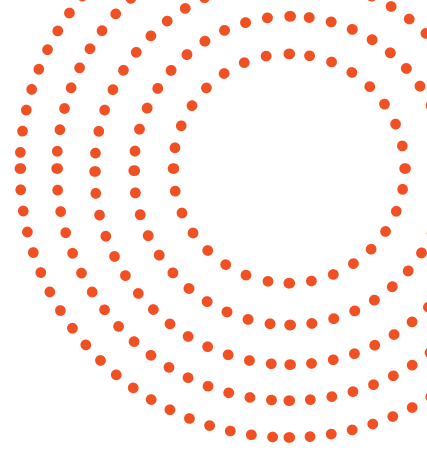
\$16.50 PSF

Additional Rent

\$21.36 PSF



Floor Plans



4th Floor

Net Rent

\$16.50 PSF

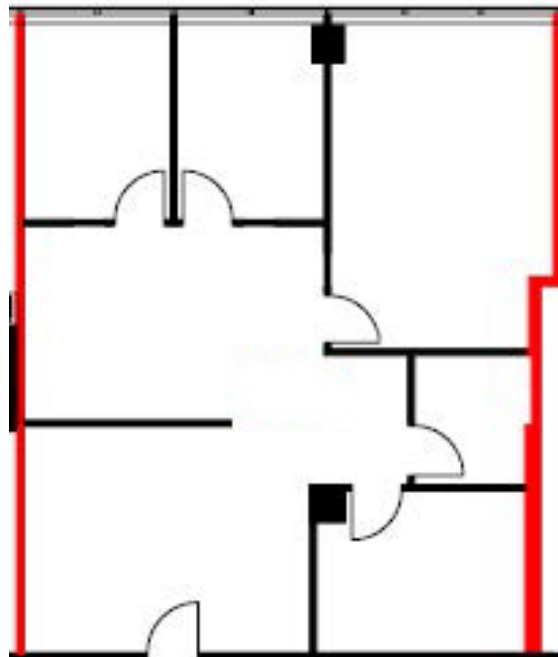
Additional Rent

\$21.36 PSF

Suite

400

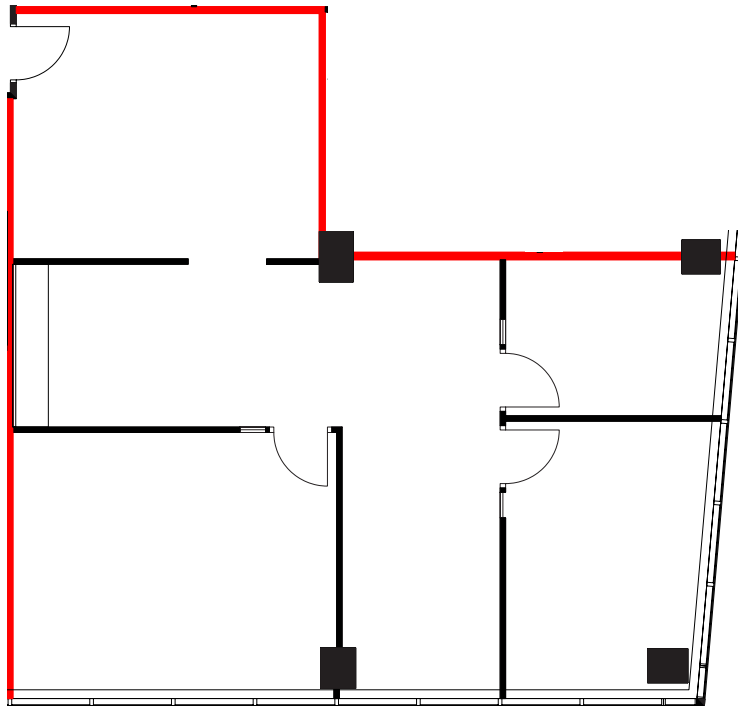
1,569 SF



\$16.50 PSF

\$21.36 PSF

1,622 SF



Amenities Map



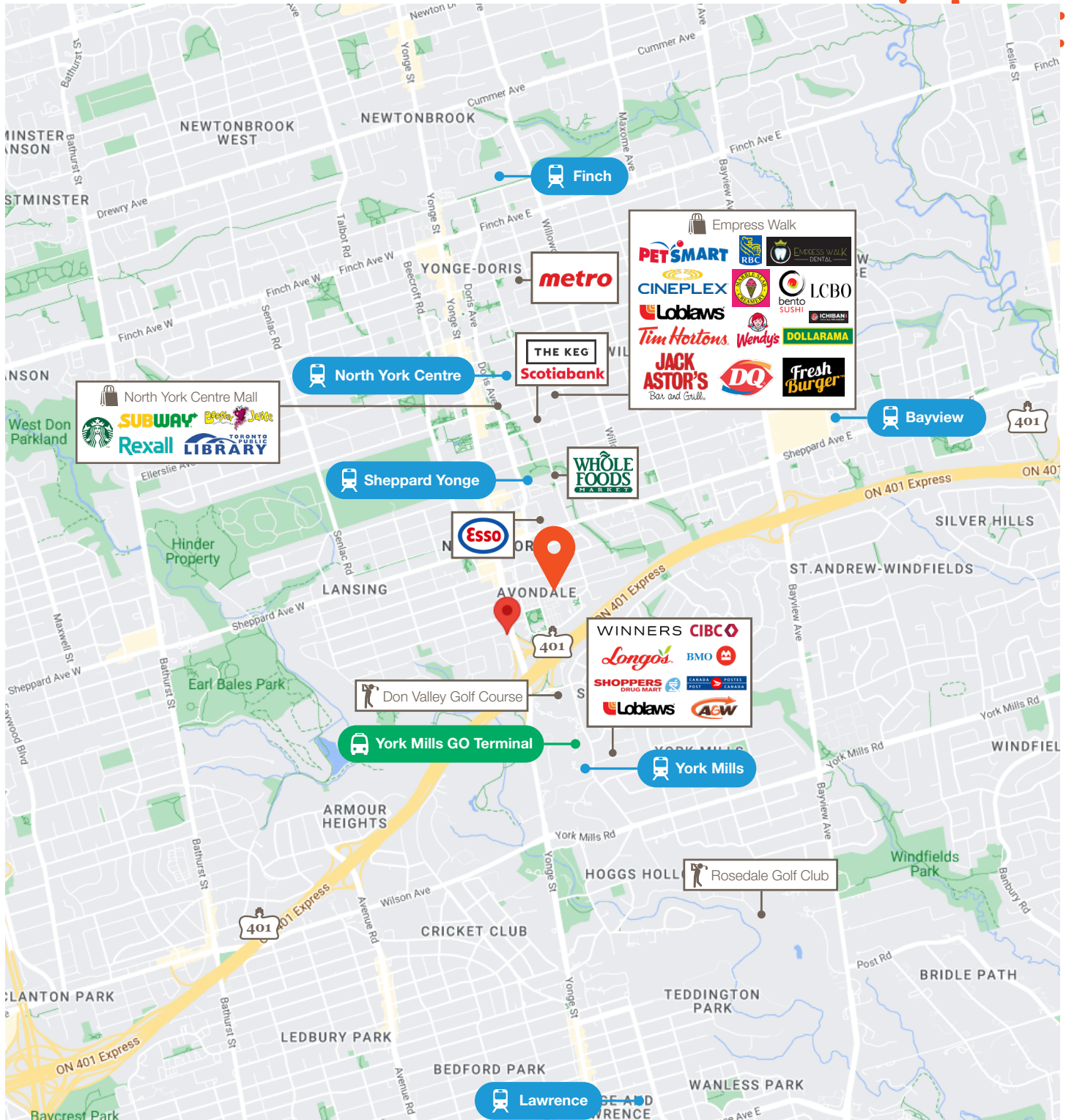
4576 Yonge Street



Subway Stations



GO Bus Terminal



Ken Karulas*, Senior Vice President
905.489.0711 • kkarulas@lennard.com

Lennard:

Photos



Ken Karulas*, Senior Vice President
905.489.0711 • kkarulas@lennard.com

Lennard:



Lennard:

Ken Karulas*, Senior Vice President
905.489.0711
kkarulas@lennard.com

201-60 Columbia Way, Markham
905.752.2220
lennard.com

*Sales Representative

Statements and information contained are based on the information furnished by principals and sources which we deem reliable but for which we can assume no responsibility. Lennard Commercial Realty, Brokerage.