



For Sale:

# 443 Main Street W.

8,500 SF Building On 2 Acres, Gravelled and Fenced  
(Additional 16.7 Acres of M.2. Land Also Available)

**Lennard:** Alastair Strachan\*, Senior Vice President  
416.346.9500 • astrachan@lennard.com

\*Sales Representative

[lennard.com](http://lennard.com)



# Property Overview

Price

**\$2,100,000**

(\$247/SF)

Total Area

**8,500 SF**

Land Size

**2 acres**

Power

**600V, 400 Amps**

Clear Heights

**12' and 15'**

Zoning

**C.4. - Special Commercial Which Allows Many Industrial Uses In Addition To The Usual Commercial Uses**

Other

**Column Free Interior, Lot is Fenced & Gravelled Adjoining 16.7 (AC.) M.2. Can Be Purchased Or Leased In Part**



**Lennard:**

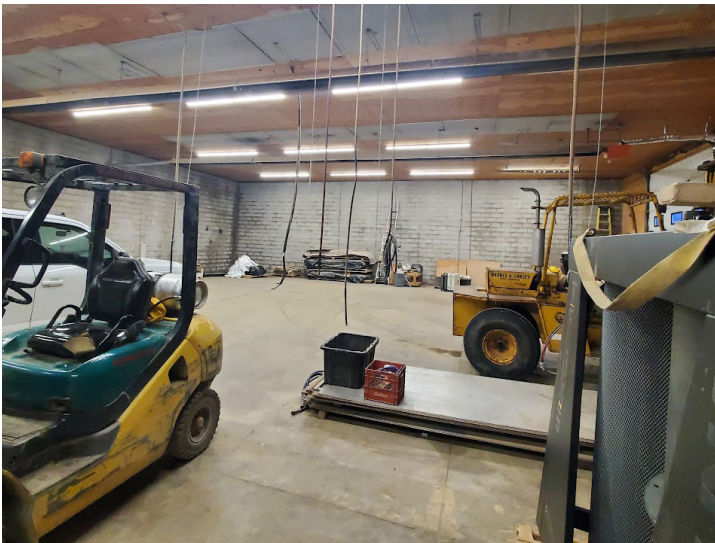
Alastair Strachan\*, Senior Vice President  
416.346.9500 • astrachan@lennard.com

\*Sales Representative

[lennard.com](http://lennard.com)



# Property Photos



For More Information  
Please Contact:

**Lennard:**

Alastair Strachan\*  
416.346.9500  
[astrachan@lennard.com](mailto:astrachan@lennard.com)

602-350 Burnhamthorpe Road W, Mississauga  
905.625.5020  
[lennard.com](http://lennard.com)

\*Sales Representative

Statements and information contained are based on the information furnished by principals and sources which we deem reliable but for which we can assume no responsibility. Lennard Commercial Realty, Brokerage.