

2700 Matheson Boulevard E. Mississauga

Airport Corporate Centre Class "A" Office Building

Jim O'Reilly, Partner*
905.247.9230
joreilly@lennard.com

Brian Lynett, Partner*
905.247.9222
blynett@lennard.com

For Lease: Office

Built Suites
Available
from 5,398
SF up to
13,348 SF



Lennard:

602-350 Burnhamthorpe Road W, Mississauga
905.625.5020 • lennard.com

*Sales Representative



2700 Matheson Boulevard E.

Class "A", 8 storey 200,000 SF office building located in the Airport Corporate Centre, at the corner of Matheson Boulevard East and Explorer Drive.



Suite

404E: 13,348 SF *(Built-out)*

600E: 5,398 SF

800W: 12,462 SF *(Built-out/Furnished)*



Net Rent

\$17.00 PSF

Additional Rent (2025 Est.)

\$17.63 PSF

Gross Rent

\$34.63 PSF

Tenant Improvement Allowance

Negotiable



Availability

Immediate



Leasing Agents

Jim O'Reilly*

Partner

905.247.9230

joreilly@lennard.com

Brian Lynett*

Partner

905.247.9222

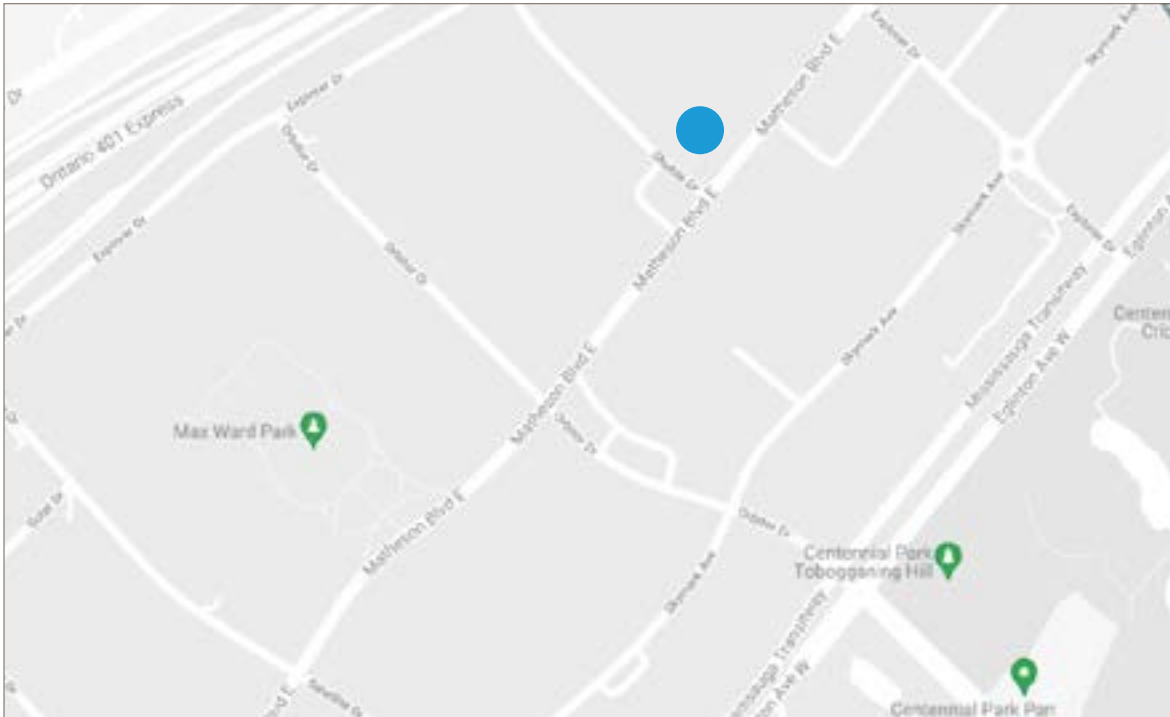
blynett@lennard.com

*Sales Representative

Property Highlights

- Two storey atrium lobby in the East/West towers connected by a central atrium
- BOMA BEST Certified level 2
- 2 Loading Docks at dock height
- HVAC: Central system with compartmental air handling units on each floor
- Security: CCTV camera system and offsite alarm response. Proximity card system for after hours access
- Fibre/Providers: Allstream, Bell, Telus, Rogers
- Close proximity to all Airport Corporate Centre amenities and new rapid bus transit system

2700 Matheson Boulevard E.



Parking

- Building ratio of 4 stalls per 1,000 SF leased
- Combination of free surface/deck parking and reserved underground parking
- 1 stall per 2,000 SF leased reserved underground parking at a cost of \$100.00 per stall per month

What's Near By

2700 Matheson Blvd E. is located in the Airport Corporate Centre and has a Class "A" Certified Office building rating. This prestigious office tower has direct access to the Mississauga Transitway and within walking distance to various restaurants as well as Centennial Park

Lennard:

Jim O'Reilly*, Partner
905.247.9230 • joreilly@lennard.com

Brian Lynett*, Partner
905.247.9222 • blynett@lennard.com

lennard.com

*Sales Representative

2700 Matheson Boulevard E.

404E: 13,347 SF



Lennard:

Jim O'Reilly*, Partner
905.247.9230 • joreilly@lennard.com

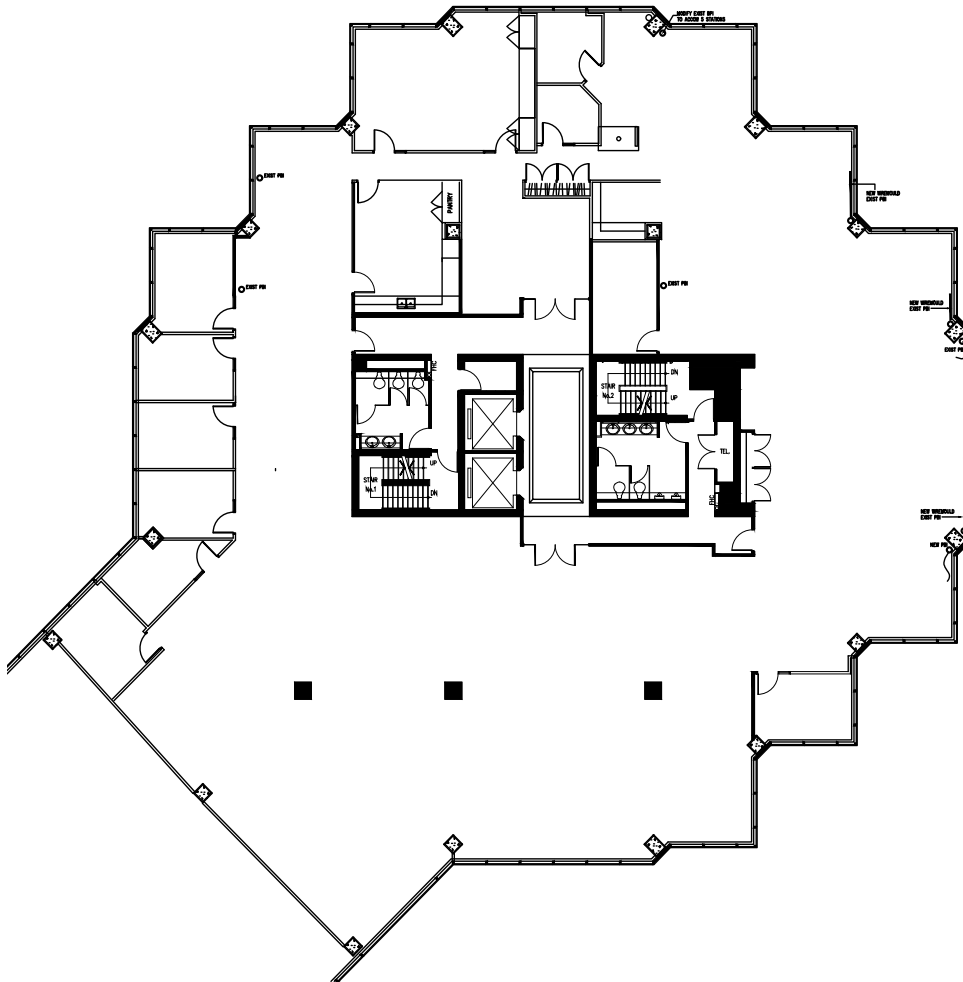
Brian Lynett*, Partner
905.247.9222 • blynett@lennard.com

lennard.com

*Sales Representative

2700 Matheson Boulevard E.

Floor Plan 404E: 13,347 SF



Lennard:

Jim O'Reilly*, Partner
905.247.9230 • joreilly@lennard.com

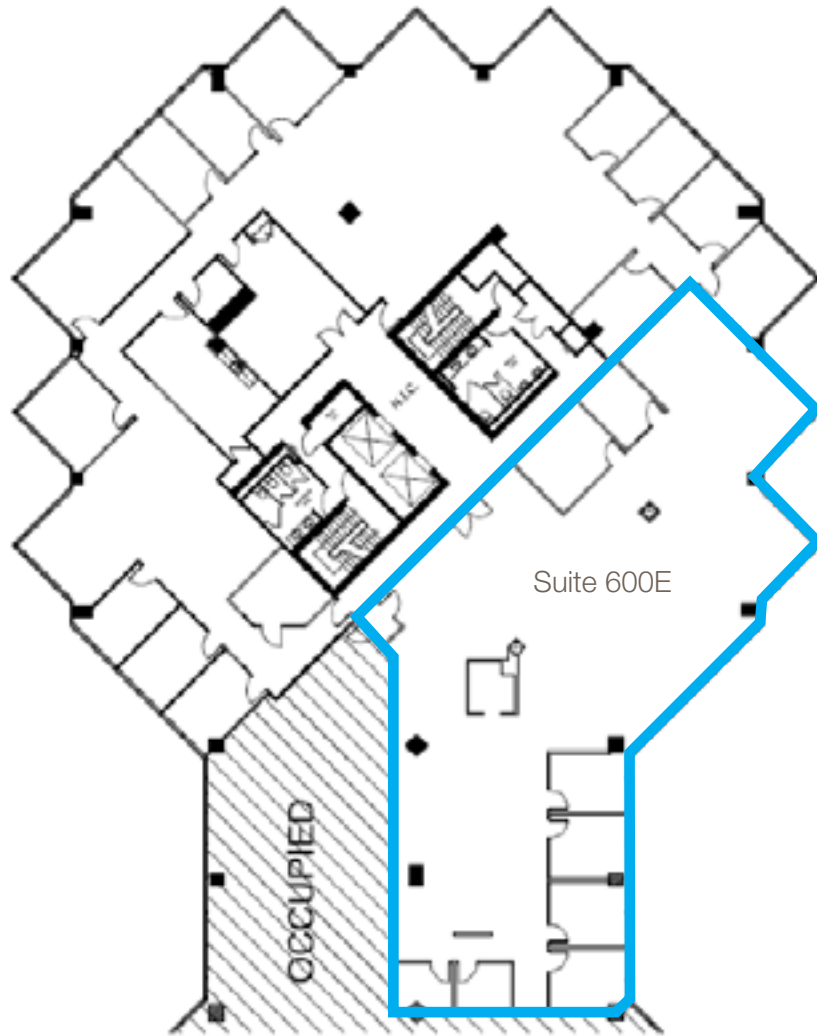
Brian Lynett*, Partner
905.247.9222 • blynett@lennard.com

lennard.com

*Sales Representative

2700 Matheson Boulevard E.

Floor Plan 600E: 5,398 SF



Lennard:

Jim O'Reilly*, Partner
905.247.9230 • joreilly@lennard.com

Brian Lynett*, Partner
905.247.9222 • blynett@lennard.com

lennard.com

*Sales Representative

2700 Matheson Boulevard E.

800W: 12,462 SF



Lennard:

Jim O'Reilly*, Partner
905.247.9230 • joreilly@lennard.com

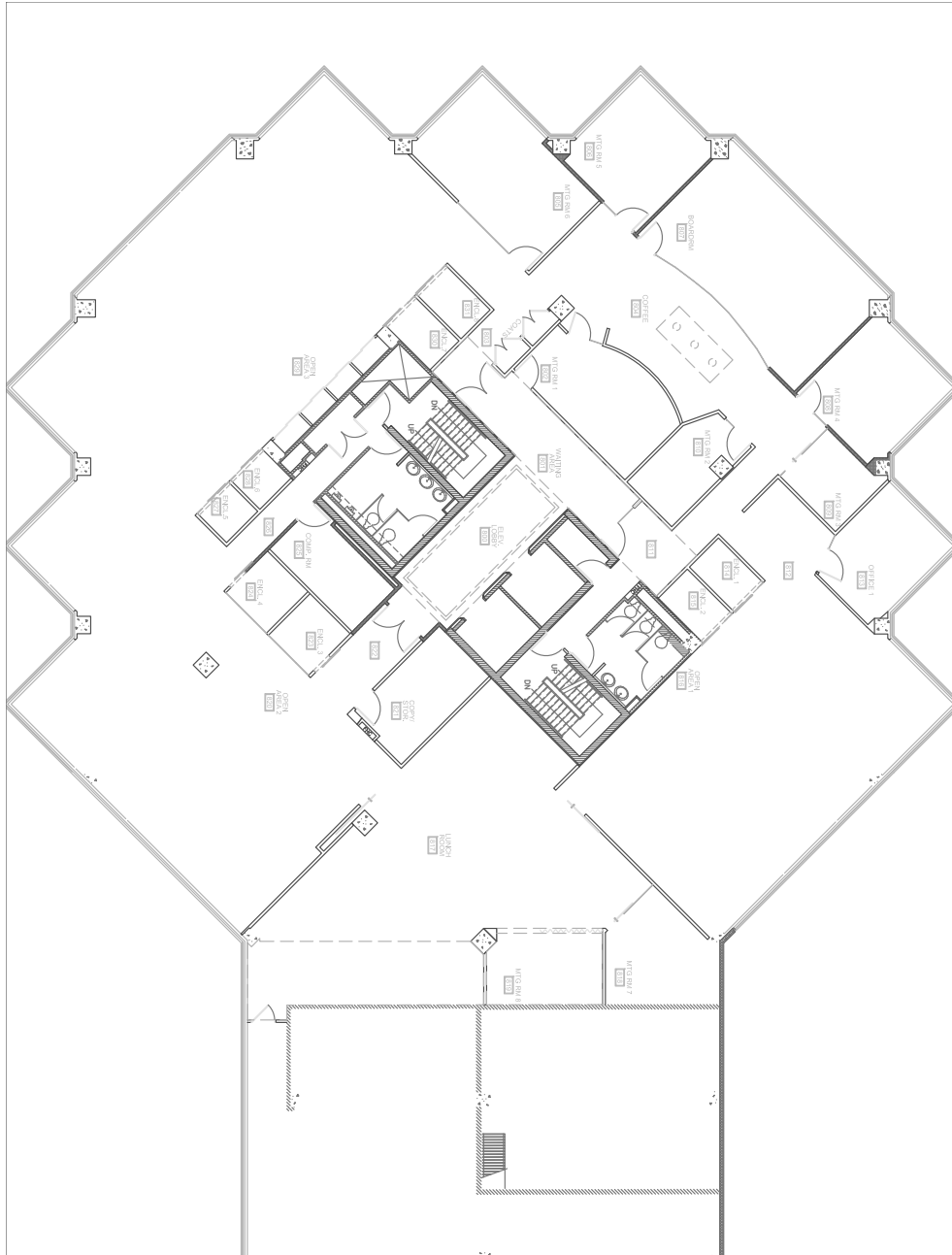
Brian Lynett*, Partner
905.247.9222 • blynett@lennard.com

lennard.com

*Sales Representative

2700 Matheson Boulevard E.

Floor Plan 800W: 12,462 SF



Lennard:

Jim O'Reilly*, Partner
905.247.9230 • joreilly@lennard.com

Brian Lynett*, Partner
905.247.9222 • blynett@lennard.com

lennard.com

*Sales Representative

2700 Matheson Boulevard E.

Mississauga Transitway

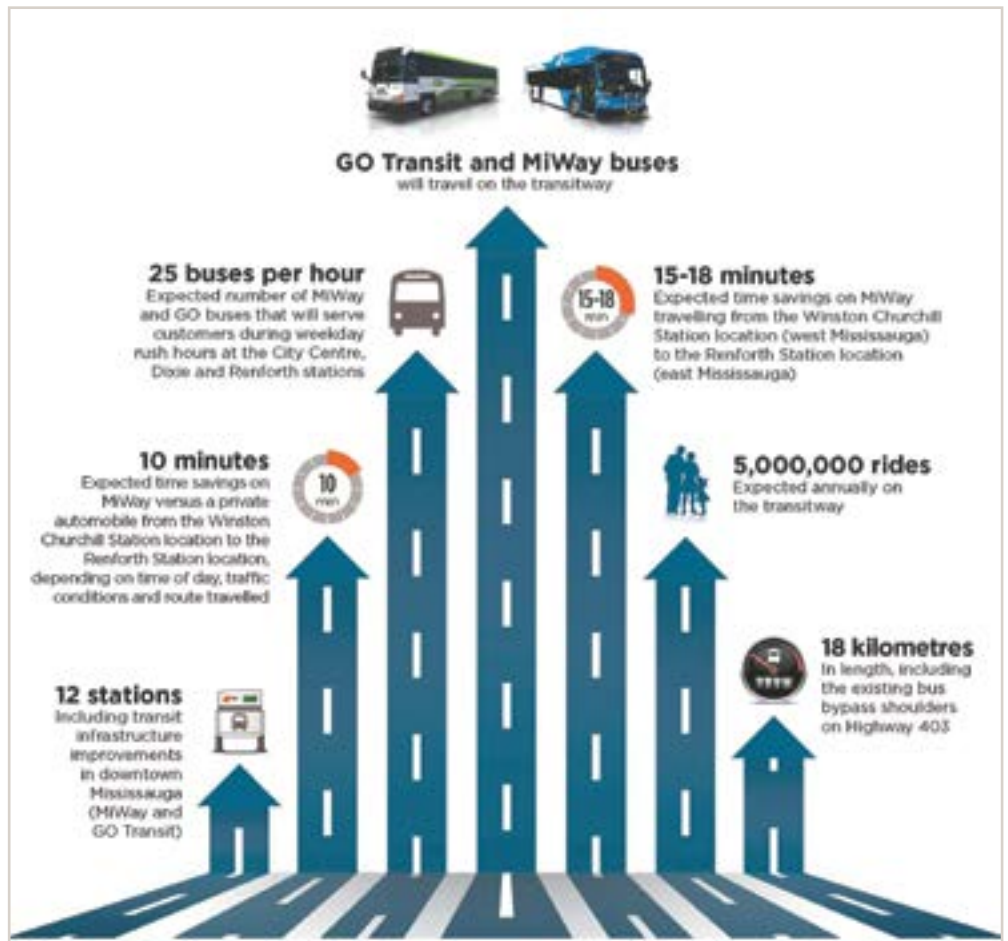


miWAY
Mississauga Transitway
 Effective May 1, 2017

- Transitway Station
- Parking
- Mississauga Transitway
- MiExpress Route All Day Service
- MiExpress Route AM/PM Rush Hour Service
- MiExpress Route
- MiLocal Route



Image source: MiWay, mississauga.ca/portal/miway



Lennard:

Jim O'Reilly*, Partner
 905.247.9230 • joreilly@lennard.com

Brian Lynett*, Partner
 905.247.9222 • blynett@lennard.com

lennard.com

*Sales Representative

2700 Matheson Boulevard E.

Amenities Map

● Property Location - 2700 Matheson Blvd.



Statements and information contained are based on the information furnished by principals and sources which we deem reliable but for which we can assume no responsibility. Lennard Commercial Realty, Brokerage 2024.

Lennard:

Jim O'Reilly*, Partner
905.247.9230 • joreilly@lennard.com

Brian Lynett*, Partner
905.247.9222 • blynett@lennard.com

lennard.com

*Sales Representative