

Here is where your
business will *grow*.



For Lease: Office

209-2601 Matheson Boulevard E.

Located in Mississauga's growing Airport Corporate Centre

Lennard:

602-350 Burnhamthorpe Road W, Mississauga
905.625.5020

lennard.com

2601 Matheson Boulevard E.



Available Space

Unit 209: 1,443 SF



Net Rent

\$15.00 PSF

T.M.I

\$9.25 PSF



Availability

60 Days



Listing Agents

Joni Blanshard*

Vice President

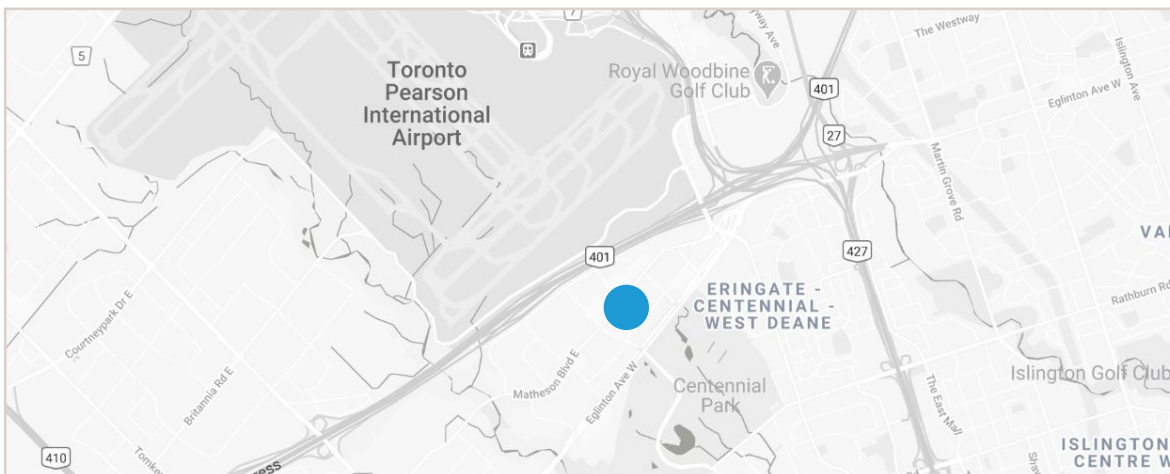
905.247.9231

jblanshard@lennard.com

*Sales Representative

Property Highlights

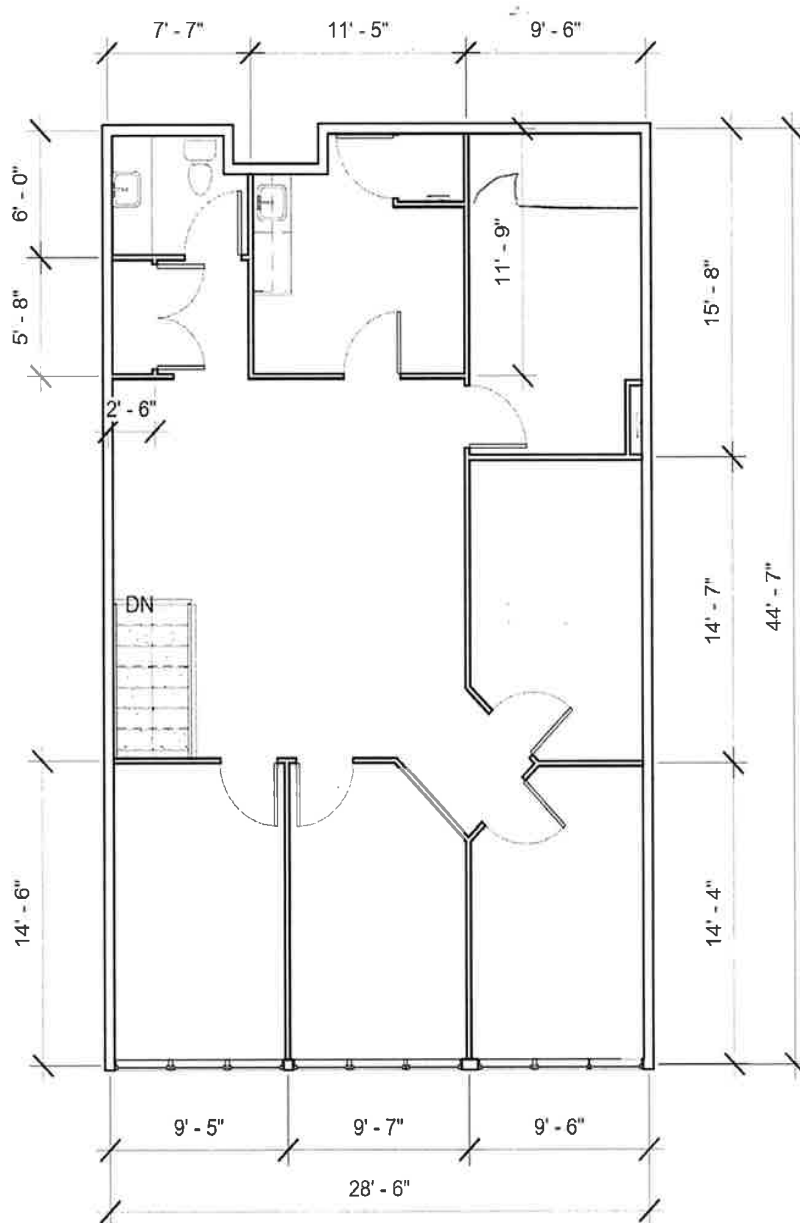
- Serviced by both Mississauga & Toronto Public Transit
- Many Amenities nearby and within walking distance
- Outdoor parking available at no charge
- Suite is built-out with 3 generous sized offices on glass, meeting room, kitchenette and open area
- Suite in move-in condition
- Tenant to pay own utilities and interior janitorial estimated to be \$2.50 - \$3.00 PSF



Statements and information contained are based on the information furnished by principals and sources which we deem reliable but for which we can assume no responsibility. Lennard Commercial Realty, Brokerage

2601 Matheson Boulevard E.

Unit 209: 1,443 SF



Lennard:

Joni Blanshard*, Vice President
905.247.9231 • jblanshard@lennard.com

*Sales Representative

lennard.com

2601 Matheson Boulevard E.



*A bright
future
for your
business
is right here.*



Lennard:

Joni Blanshard*, Vice President
905.247.9231 • jblanshard@lennard.com

*Sales Representative

lennard.com

Lennard:

Joni Blanshard*, Vice President
905.247.9231
jblanshard@lennard.com

602-350 Burnhamthorpe Road W., Mississauga
905.625.5020
lennard.com

*Sales Representative

Statements and information contained are based on the information furnished by principals and sources which we deem reliable but for which we can assume no responsibility. Lennard Commercial Realty, Brokerage