

For Lease: Office Space

25 Centurian Drive

Markham, ON



Lennard:

25 Centurian Drive

25 Centurian is located in the heart of the Allstate Business Park. A two-storey office building offering an intimate professional office environment within walking distance from the Woodbine amenities.



Suite
208

Available Space
6,880 SF



Parking
4.5 per 1,000
free surface



Net Rent
\$16.00 PSF

Additional Rent
\$12.25 PSF



Inducement or Turnkey
Provided as required to
accommodate new tenants



Listing Agents
Ken Karalus*
Executive Vice President
905.489.0711
kkaralus@lennard.com

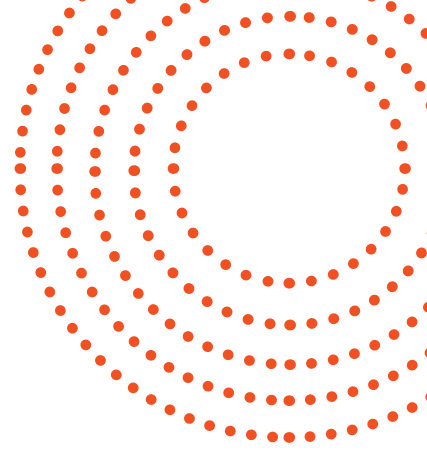
*Sales Representative

Property Highlights

- Only 9% building gross up factor!
- Low Additional Rent
- High ratio surface parking
- 24 hour HVAC Available



Floor Plans



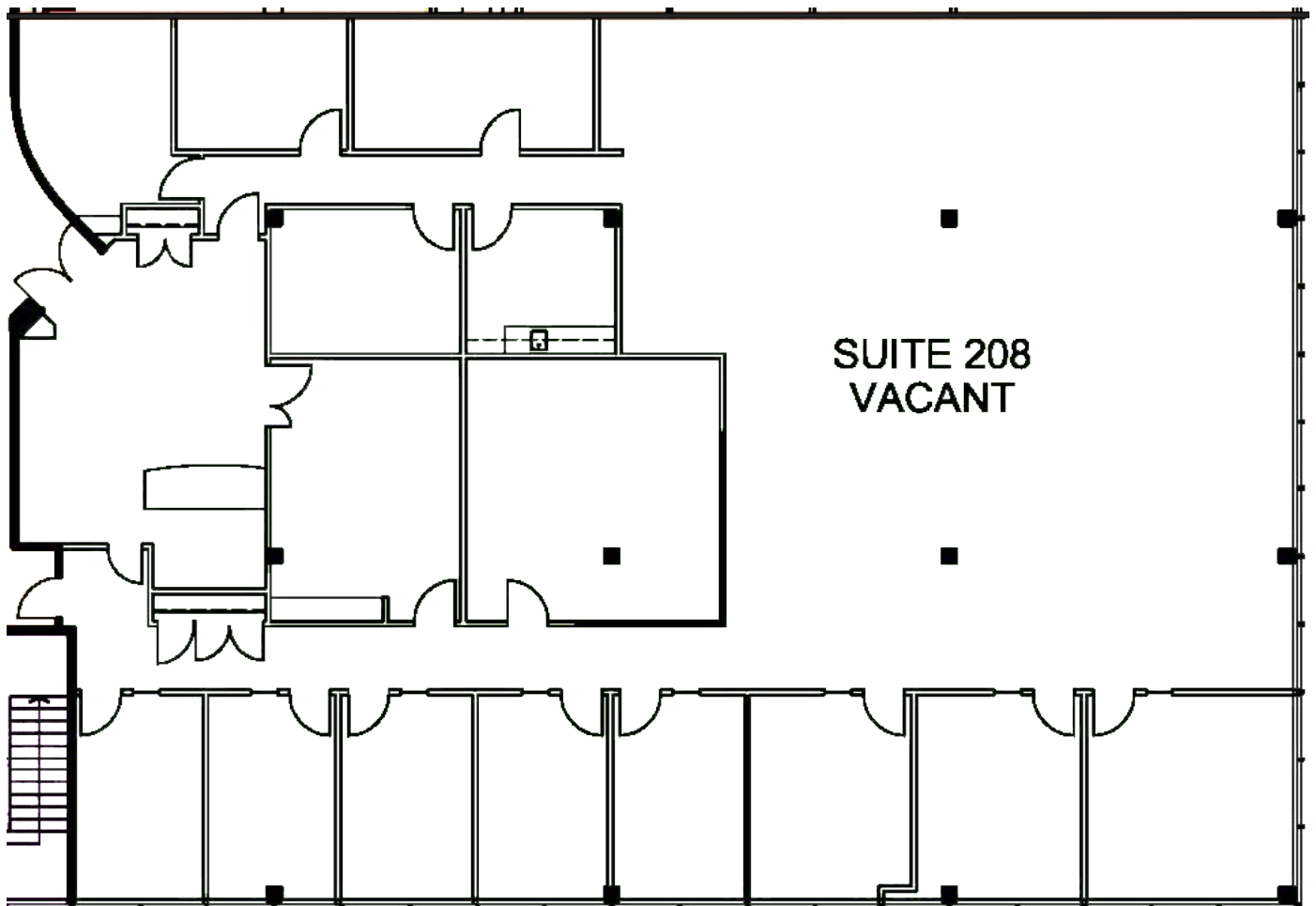
Suite

208

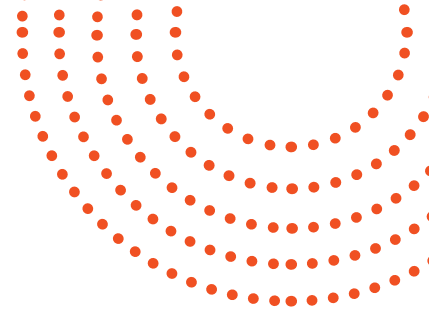
6,880 SF

Unit Highlights

- Corner suite with multiple office/meeting rooms, open, and kitchen area



Amenities Map

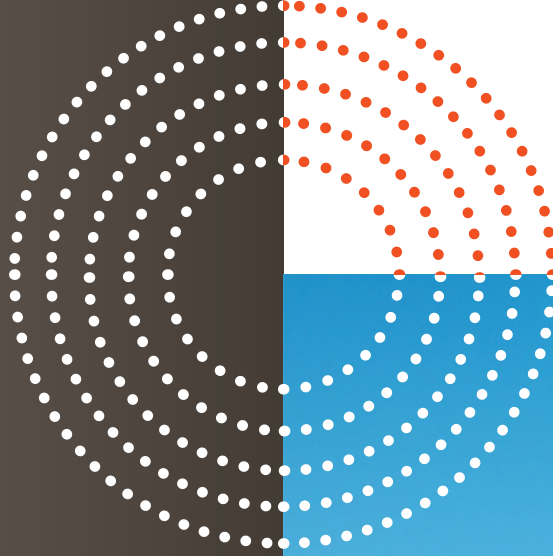


Photos



Ken Karulas*, Executive Vice President
905.489.0711 • kkarulas@lennard.com

Lennard:



Lennard:

Ken Karulas*, Executive Vice President
905.489.0711
kkarulas@lennard.com

201-60 Columbia Way, Markham
905.752.2220
lennard.com

*Sales Representative

Statements and information contained are based on the information furnished by principals and sources which we deem reliable but for which we can assume no responsibility. Lennard Commercial Realty, Brokerage.

