

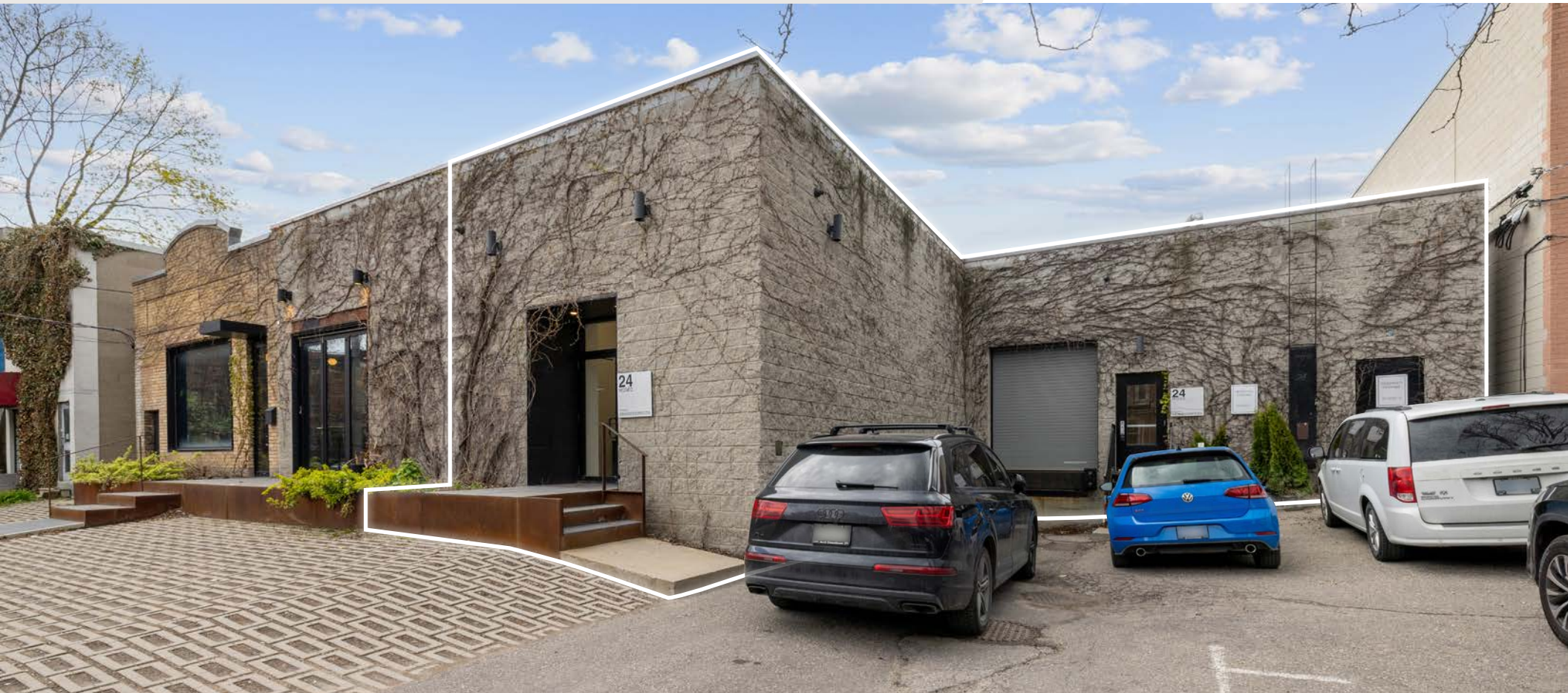
For Lease

Creative/Flex Industrial-Style Space

24 McGee Street

Toronto, Ontario

**Lennard:**



For more information  
please contact:

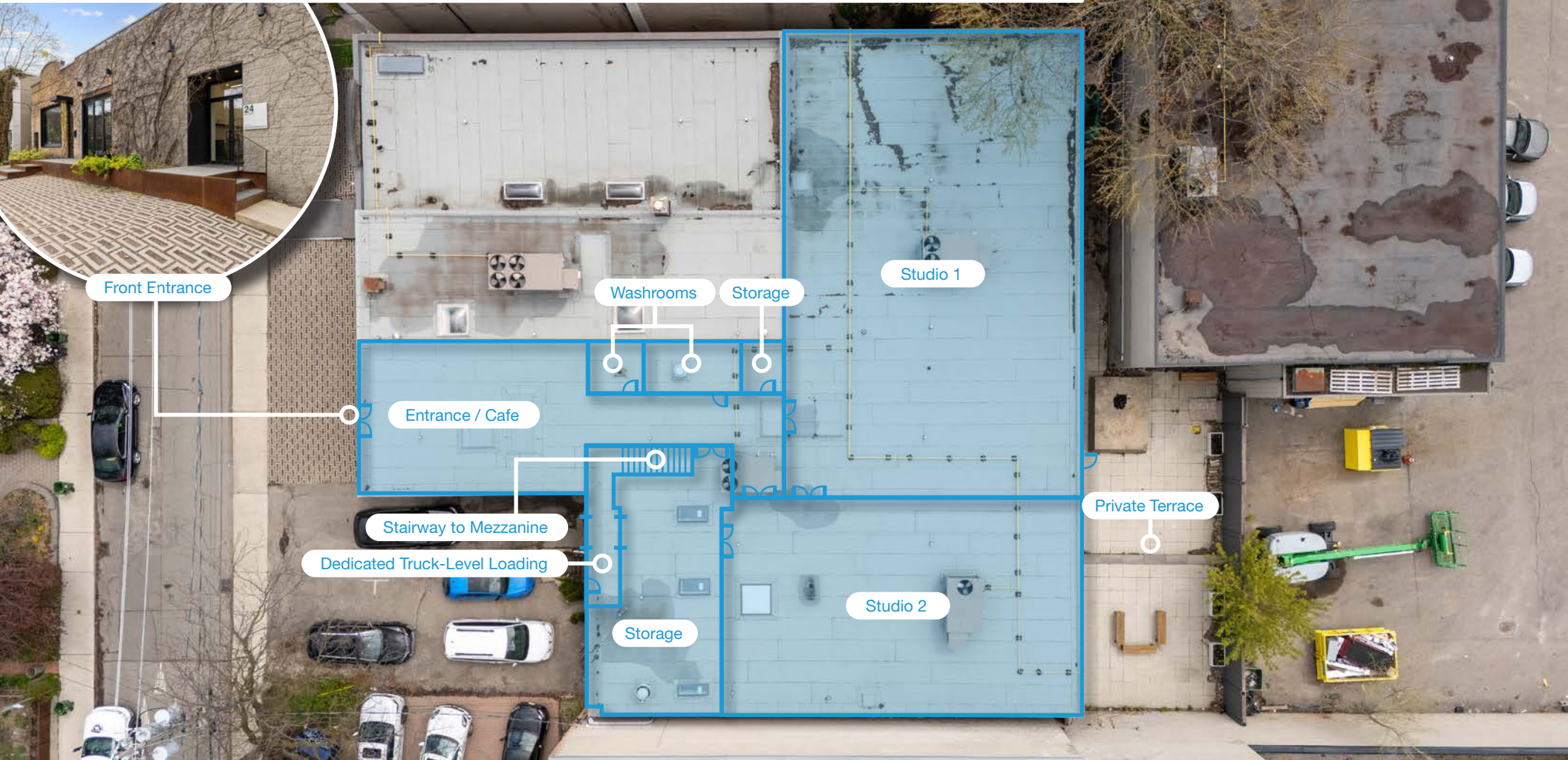
**David Horowitz\***  
Senior Vice President  
416.525.2005  
[dhorowitz@lennard.com](mailto:dhorowitz@lennard.com)

\*Sales Representative

For Lease  
**24 McGee Street**  
Toronto, ON

# The Space

Creative/Flex Space



For Lease  
**24 McGee Street**  
Toronto, ON



## The Space

Creative/Flex Space

### Property Details

- 6,140 SF Ground Floor + 340 SF Mezzanine Floor
- 1,500 SF Private Patio
- 10-12 Parking Spots
- Roll-Up Shipping Access
- Zoning: E1.0

### Space Highlights

- Located in Toronto's Growing East End Creative Corridor
- 17 Ft Studio Ceiling Heights
- Polished Concrete Floors
- Natural Light Throughout Portions of the Space
- Flexible Studio and Production Layout
- Industrial-Style Character
- Private Outdoor Patio
- Dedicated Loading Area



Availability

**Immediate**



Lease Rate

**Contact Listing Agent**



Listing Agent

**David Horowitz\***

Senior Vice President

416.525.2005

dhorowitz@lennard.com

\*Sales Representative

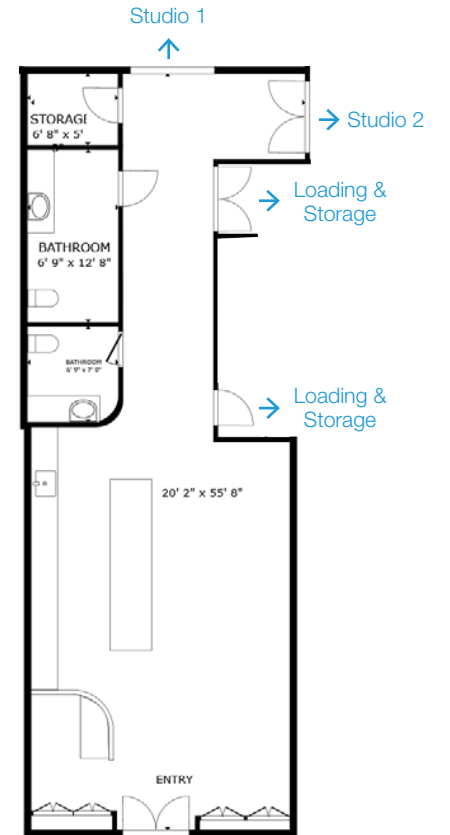
### Potential Uses

- Production Studio
- Creative Office
- Showroom
- Content Creation
- Design Studio
- Wellness / Fitness
- Gallery Space
- Event / Activation Space

For Lease  
24 McGee Street  
Toronto, ON

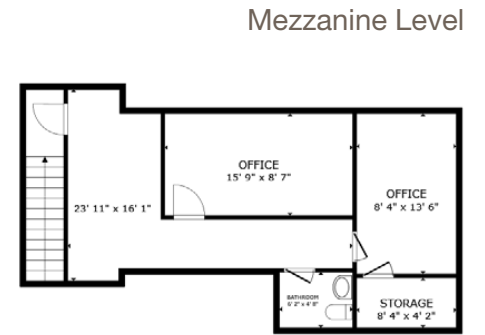
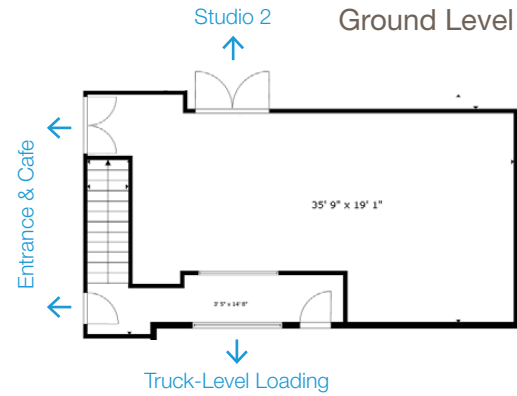
# Property Photos

## Entrance & Cafe



Areas Approximate / Not to Scale

# Loading, Storage & Support Space



Areas Approximate / Not to Scale

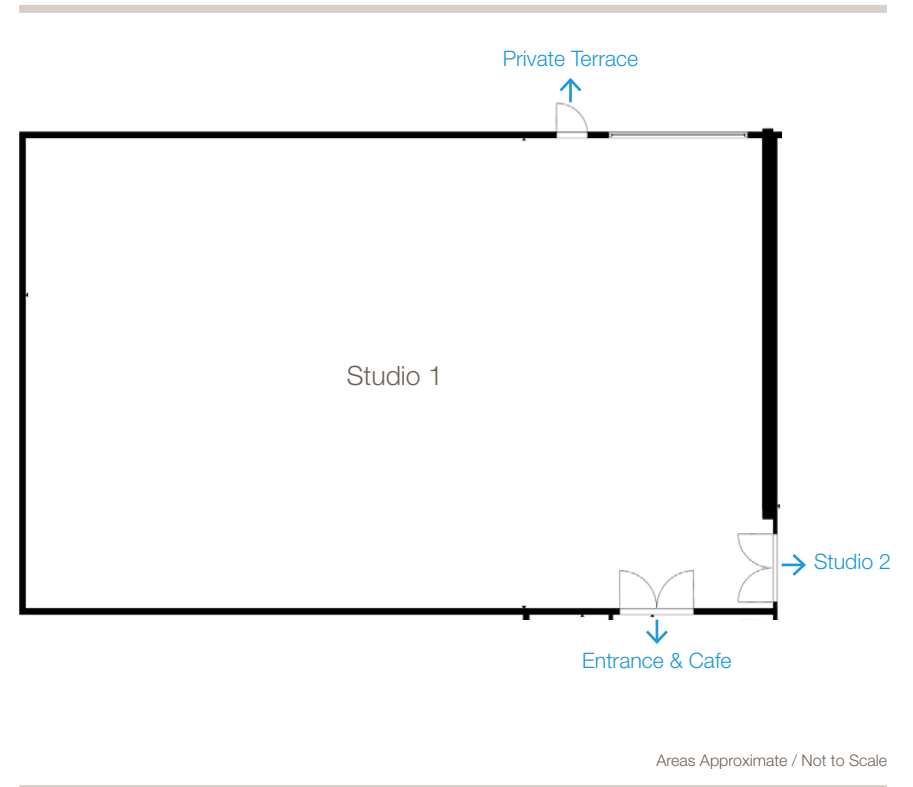
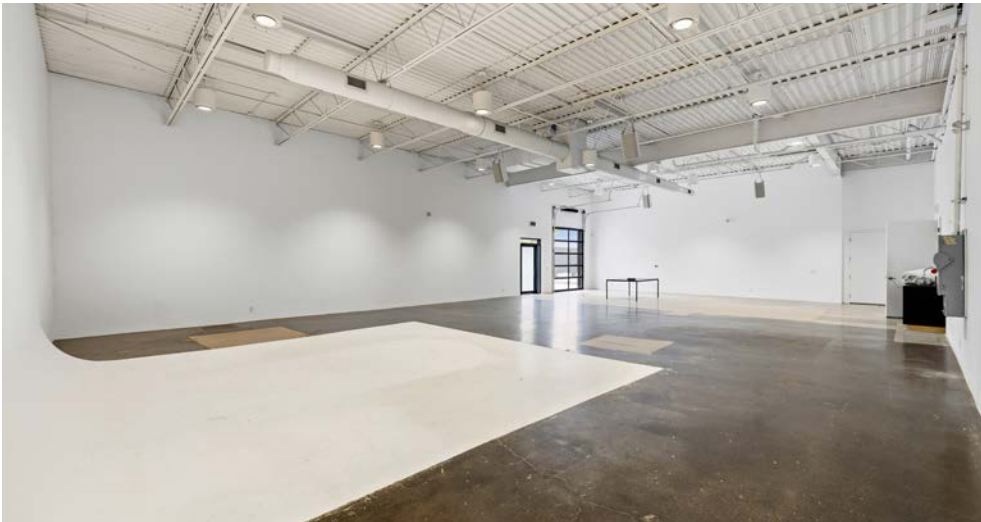


For Lease  
**24 McGee Street**  
Toronto, ON

# Floor Plans & Photos

## Studio 1

2,500 SF

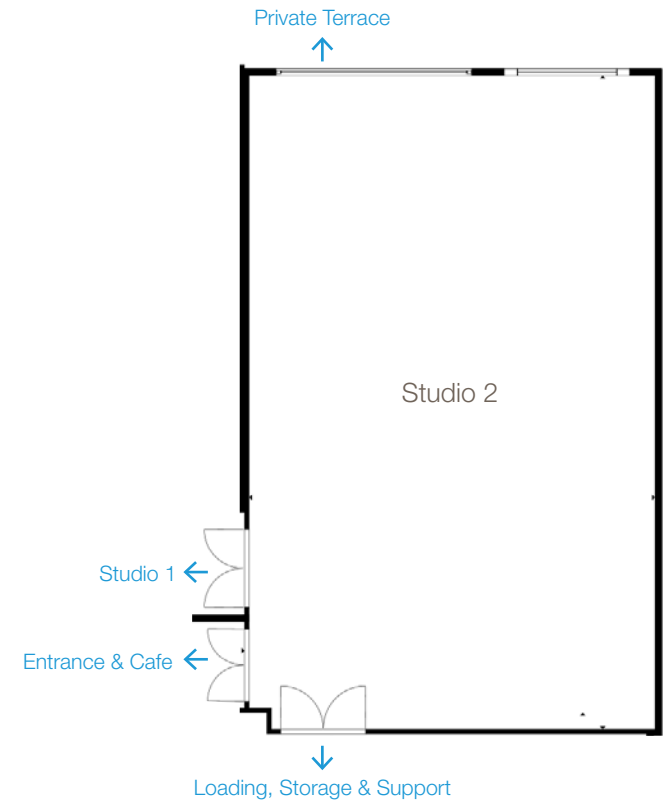


For Lease  
24 McGee Street  
Toronto, ON

# Floor Plans & Photos

## Studio 2

1,500 SF

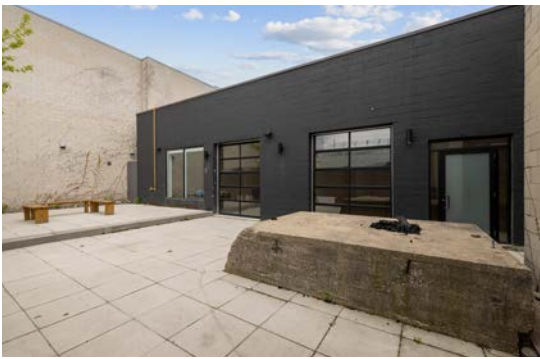
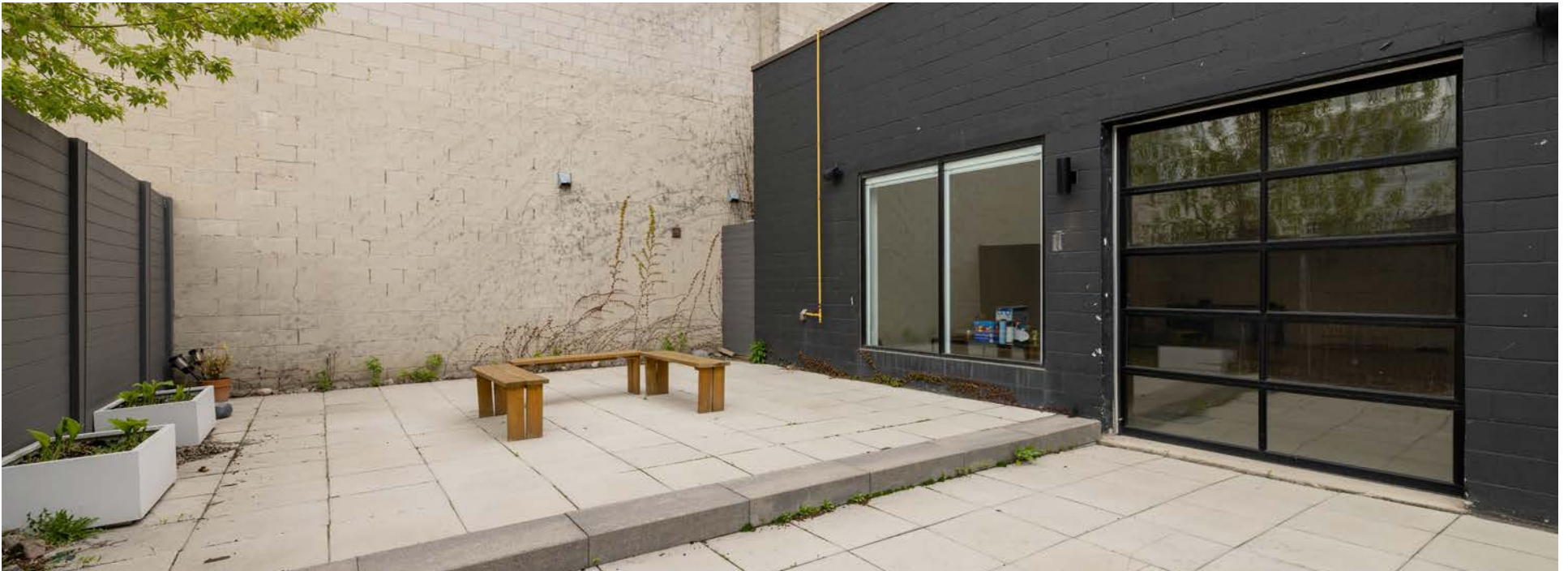


Areas Approximate / Not to Scale

For Lease  
**24 McGee Street**  
Toronto, ON

Property Photos

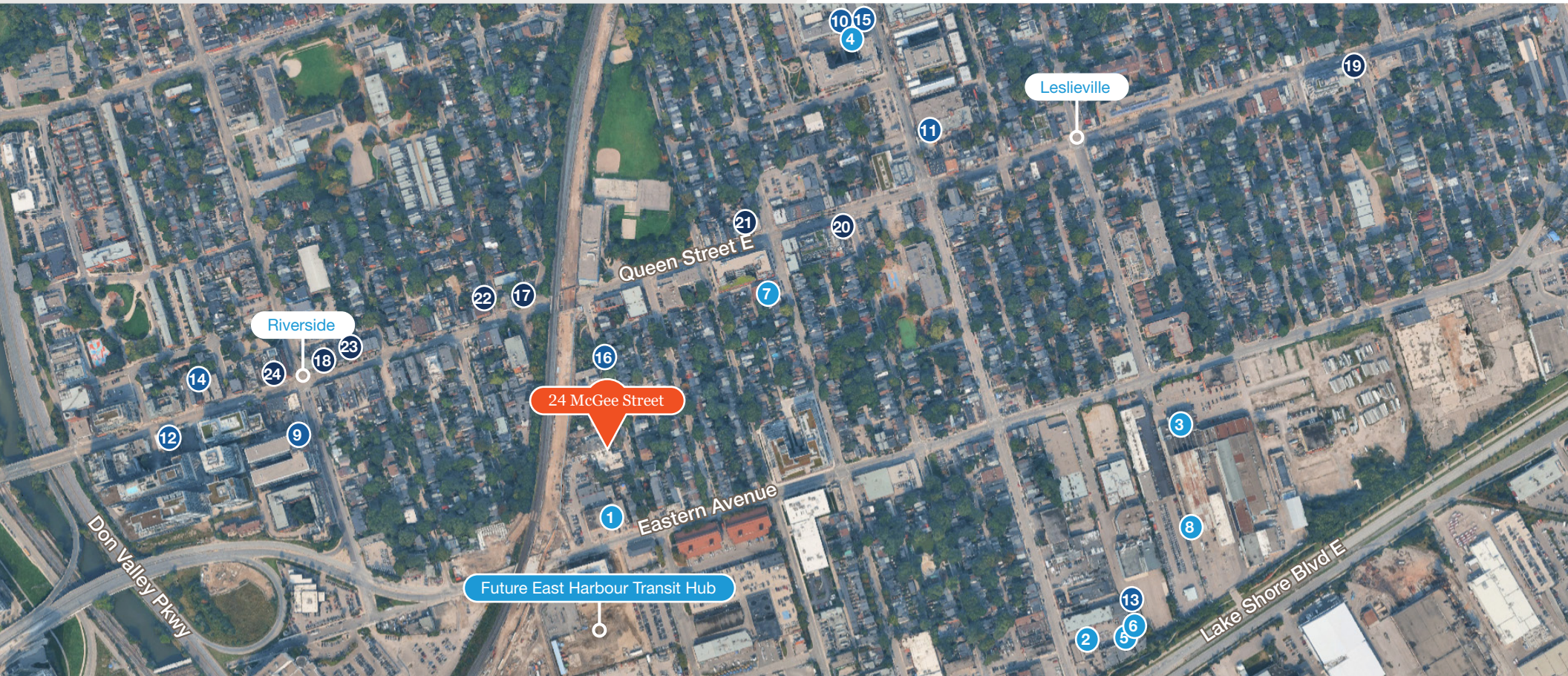
## Private Terrace



# For Lease 24 McGee Street

Toronto, ON

## Property Map



### Nearby Studios

- 1 Milestone Casting Studios
- 2 Secret Weapon Sound
- 3 AstroLab Studios Inc.
- 4 THAT Toronto Studio
- 5 Carlawft Studios
- 6 Plexman Studio
- 7 AIC Studios
- 8 Revival Studios

### Fitness

- 9 Anytime Fitness
- 10 Dwell Gym
- 11 Hone Fitness
- 12 La Femme Strong
- 13 Fortis Fitness
- 14 Studio Lagree
- 15 VIMALIFE
- 16 Chi Junky

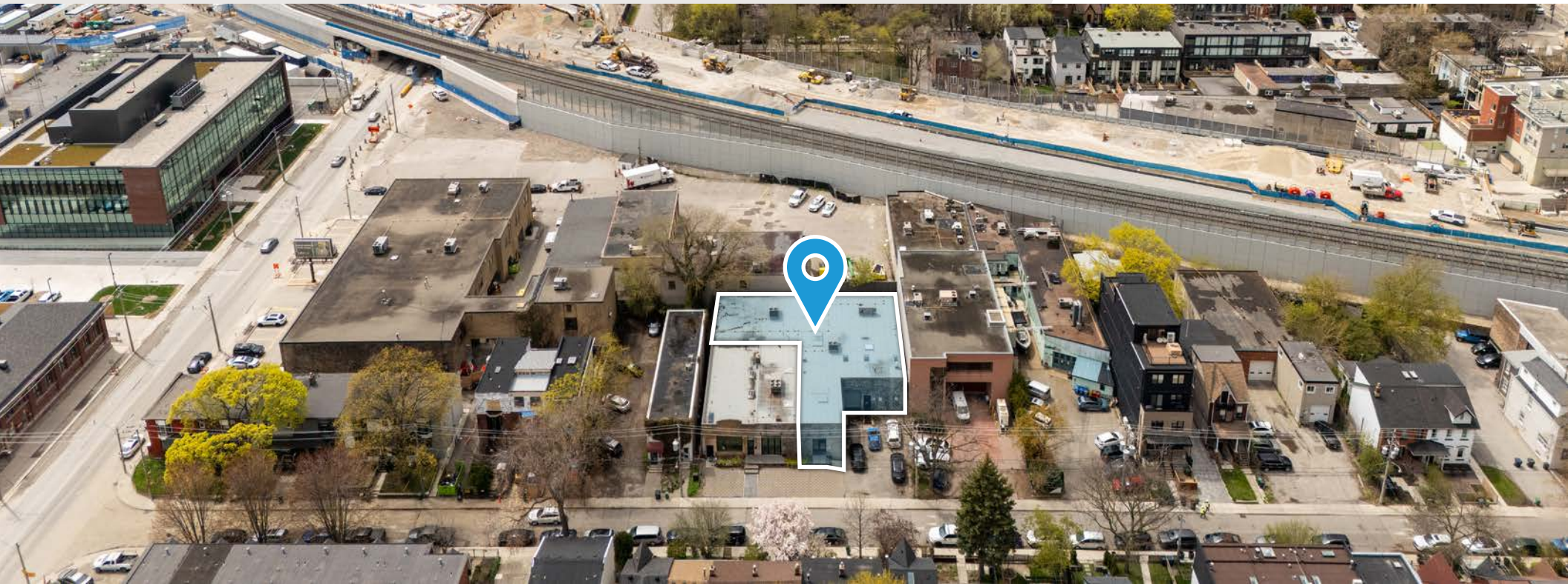
### Restaurants & Cafes

- 17 Tabule
- 18 Urban House
- 19 Nola Eatery & Bar
- 20 Ramona's Kitchen
- 21 EAT BKK Thai Kitchen
- 22 Amber Kitchen and Coffee
- 23 Lamoon Thai Kitchen & Coffee
- 24 Eastbound Brewing Company

### Key Highlights

- Future Ontario Line Connectivity
- Minutes to Downtown Toronto
- Connected to TTC Streetcar, DVP/Gardiner, and Future Regional Transit
- Located in Toronto's Growing East-End Creative Corridor
- Steps From Queen East, Leslieville, and Riverside

# Lennard:



For more information  
please contact:

---

**David Horowitz\***  
Senior Vice President  
416.525.2005  
[dhorowitz@lennard.com](mailto:dhorowitz@lennard.com)

200-55 University Avenue, Toronto  
[lennard.com](http://lennard.com)

\*Sales Representative

Statements and information contained herein are based on information furnished by principals and sources we deem reliable; however, we make no representation or warranty as to the accuracy, completeness or current status of such information and assume no responsibility for any errors, omissions, or misstatements. All information should be independently verified by the recipient. Lennard Commercial Realty, Brokerage.