

238-240 East 1st Street

North Vancouver, BC

Ground floor industrial space in Lower Lonsdale's Brewery District

For Lease: Industrial

Here is where
your business
will *grow*.



Lennard:

520-800 West Pender Street,
Vancouver, BC V6C 2V6
604.636.2620 • lennard.com

Matt Thomas

Personal Real Estate Corporation
Senior Vice President
D. 604.636.2624 • C. 604.230.2324
mthomas@lennard.com

Matt Upson

Associate
D. 604.636.2627 • C. 604.817.7199
mupson@lennard.com

238-240 East 1st Street

North Vancouver, BC

Available Space
Main Floor: 3,962 SF

Asking Lease Rate
Contact Listing Agents
Additional Rent (2025 estimate)
\$10.00 PSF/annum

Zoning
M-4 - Industrial-Commercial

Availability
Immediate

Location

238-240 East 1st Street is centrally located in North Vancouver’s highly-sought after Lower Lonsdale neighbourhood. This location offers fantastic street exposure and is situated between St. Georges Avenue and St. Andrews Avenue on East 1st Street. There is an excellent array of nearby amenities such as breweries & cideries, restaurants and retail stores. The subject property is within walking distance to public transit access including the Lonsdale Quay bus loop and SeaBus station.

Area Highlights

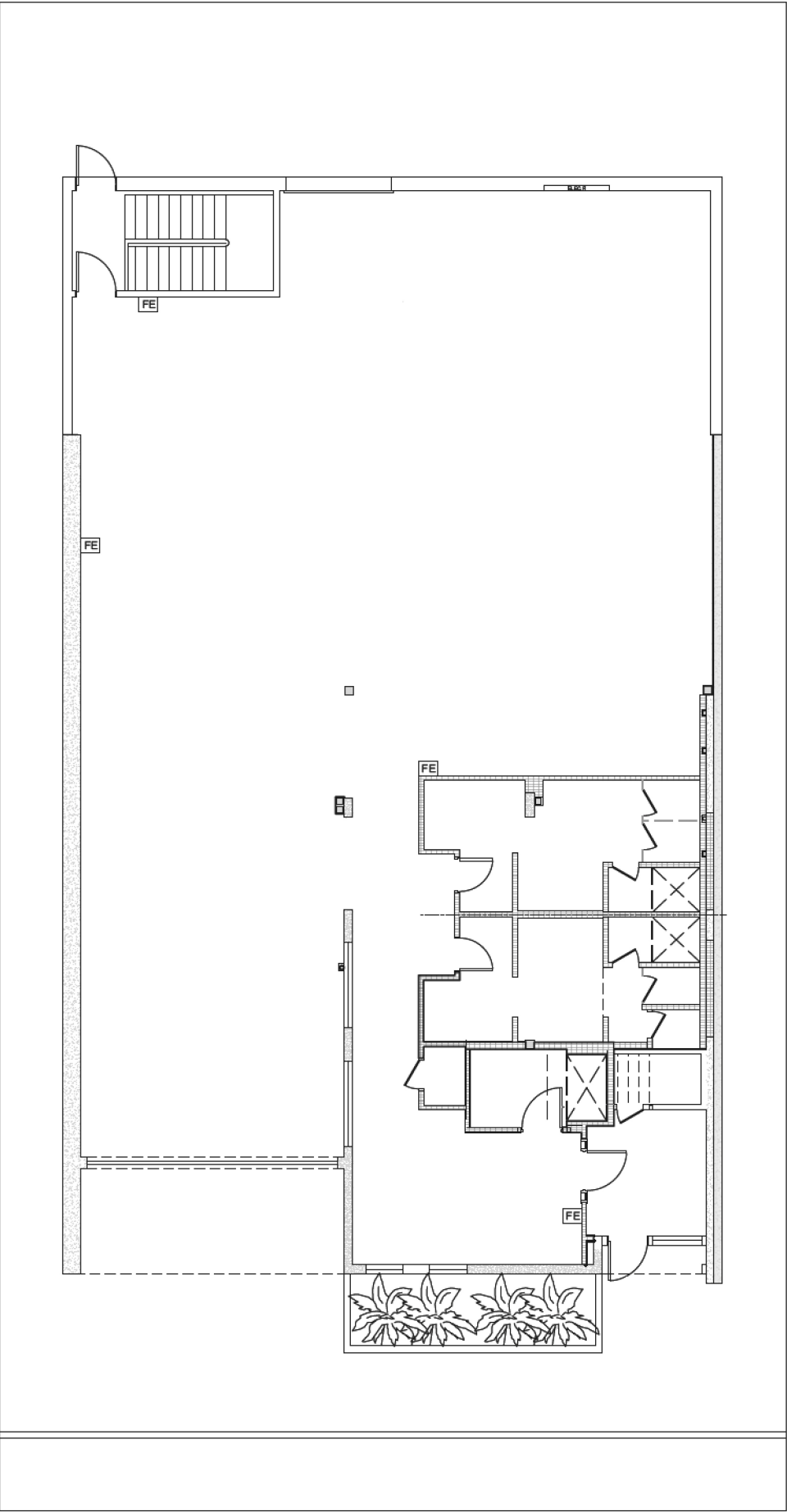
- Located in the heart of North Vancouver’s Brewery District
- Easily accessible by public transit
- Walkable distance to Lonsdale Quay Market and the Shipyards
- Surrounded by numerous nearby amenities

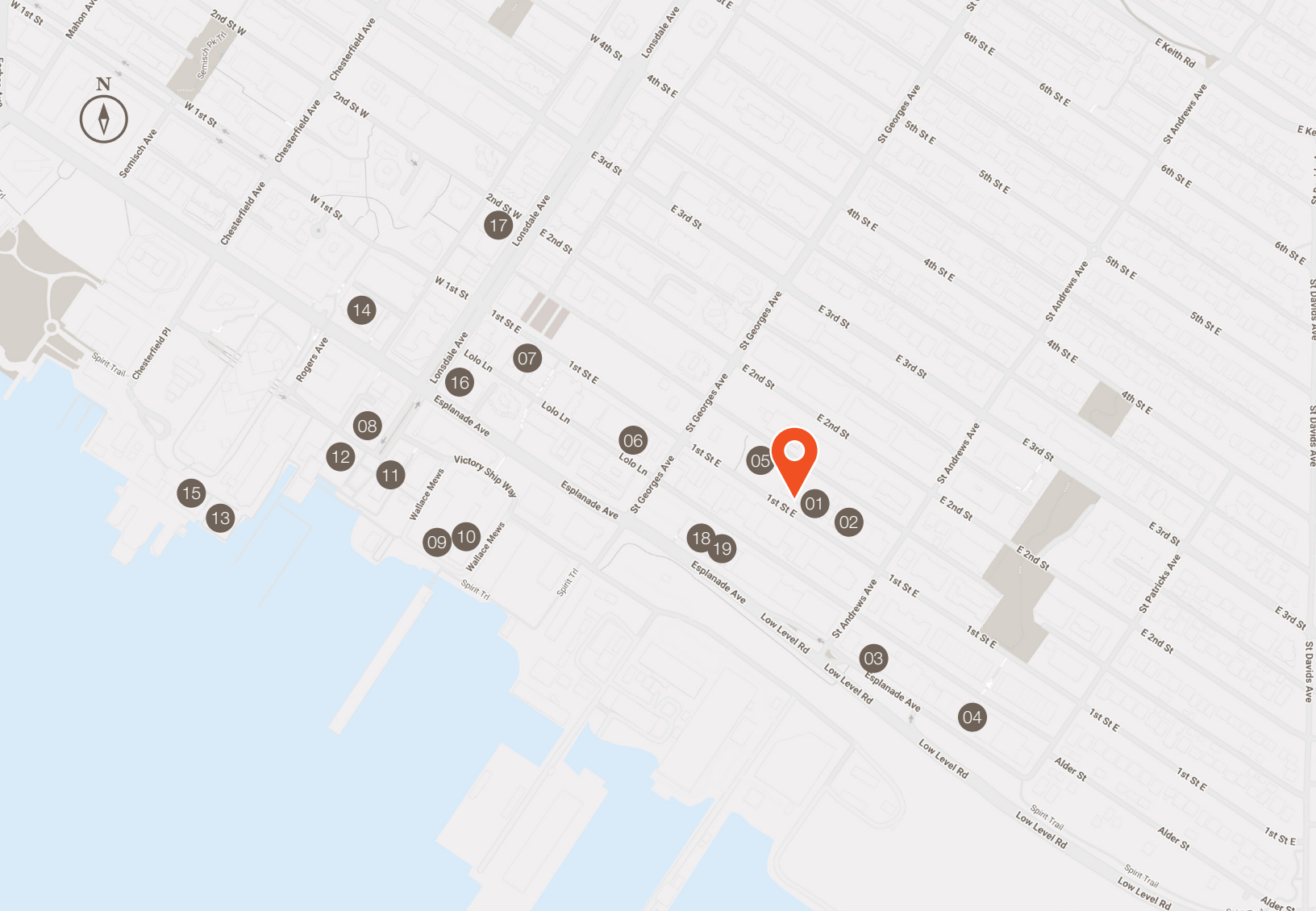


Floor Plan

Property Highlights

- Primarily open warehouse area
- Office / showroom area
- Grade loading from East 1st Street
- 11’ clear ceiling height
- 200 amp electrical





Nearby Amenities

- | | | |
|--------------------------------------|----------------------------|---------------------------------------|
| 01. Finch & Barley | 07. Streetcar Brewing | 14. Tim Hortons |
| 02. North Point Brewing Co | 08. Burgoo Bistro Lonsdale | 15. Starbucks |
| 03. Beere Brewing Company | 09. Caffè Artigiano | 16. BMO Bank of Montreal |
| 04. House of Funk Brewing | 10. JOEY Shipyards | 17. Browns Socialhouse Lower Lonsdale |
| 05. Derek Inman Public Tennis Courts | 11. Tap & Barrel Shipyards | 18. La Cervceria Astillero |
| 06. The Gull Bar and Kitchen | 12. The Polygon Gallery | 19. Garden of Granite Winery |
| | 13. Lonsdale Quay Market | |

Matt Thomas Personal Real Estate Corporation
Senior Vice President
D. 604.636.2624 • C. 604.230.2324
mthomas@lennard.com

Matt Upson
Associate
D. 604.636.2627 • C. 604.817.7199
mupson@lennard.com

Lennard: 520-800 West Pender Street, Vancouver
604.636.2620 • lennard.com

Statements and information contained herein are based on information furnished by principals and sources we deem reliable; however, we make no representation or warranty as to the accuracy, completeness or current status of such information and assume no responsibility for any errors, omissions, or misstatements. All information should be independently verified by the recipient. Lennard Commercial Realty, Brokerage.