

2180 Steeles Avenue W

4,741 SF office space in a prime business square in Vaughan

For Lease: Office



*Leasing Fee:
\$1.50/SF*

Lennard:

201-60 Columbia Way, Markham
905.752.2220 • lennard.com

*Sales Representative

2180 Steeles Avenue W

Move-in ready office space available for lease at the intersection of Keele Street and Steeles Avenue W with numerous local amenities.

Suite 305



Available Space

4,741 SF

Possession

Immediate



Asking Rent

\$12.50 PSF

T&O (2026)

\$10.59 PSF

Property Highlights

- Move-in ready office space in a busy commercial plaza.
- Quick access to Highway 7 with TTC transit available at the front door.
- Located at a high-traffic intersection in Vaughan.
- Adjacent to York University, offering strong walk-in traffic.
- Ample retail amenities and parking available.



Lennard:

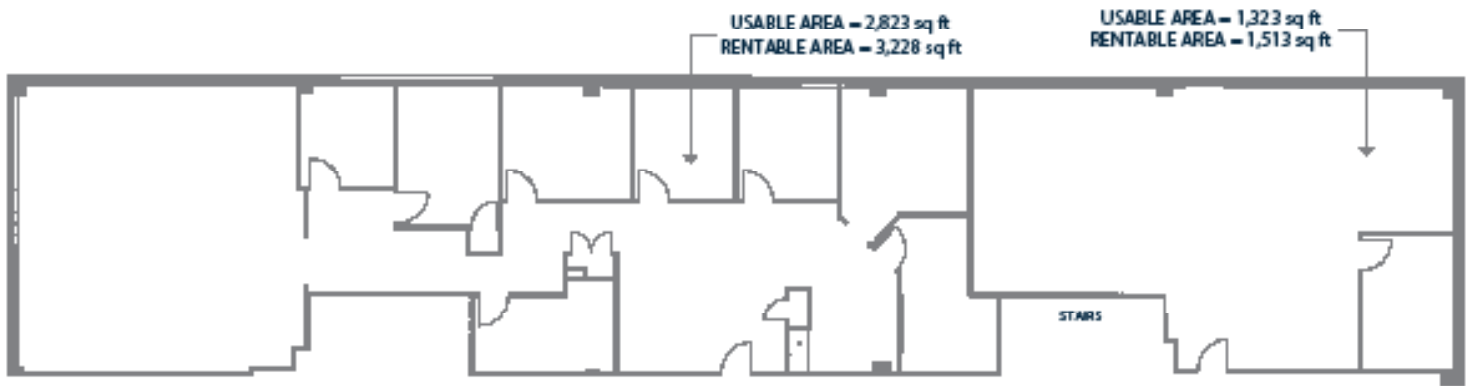
David Ranson*, Vice President
905.917.2054 • dranson@lennard.com

*Sales Representative

lennard.com

2180 Steeles Avenue W

Floor Plan



Lennard:

David Ranson*, Vice President
905.917.2054 • dranson@lennard.com

*Sales Representative

lennard.com

Amenities



Lennard:

David Ranson*, Vice President
905.917.2054 • dranson@lennard.com

*Sales Representative

lennard.com

2180 Steeles Avenue W



Lennard:

David Ranson*, Vice President
905.917.2054 • dranson@lennard.com

*Sales Representative

lennard.com

Lennard:

David Ranson*, Vice President
905.917.2054
dranson@lennard.com

201-60 Columbia Way, Markham
905.752.2220
lennard.com

*Sales Representative

Statements and information contained herein are based on information furnished by principals and sources we deem reliable; however, we make no representation or warranty as to the accuracy, completeness or current status of such information and assume no responsibility for any errors, omissions, or misstatements. All information should be independently verified by the recipient. Lennard Commercial Realty, Brokerage