



For Lease: 4,377 SF Of Office Space

1600

Laperriere Avenue

Ottawa, Ontario

Brent Heeney,
Sales Representative
D. 613.963.2631
bheeney@lennard.com

*Sales Representative

420-333 Preston Street, Ottawa
613.963.2640 • lennard.com

Marc Morin*
Broker
D. 613-716-7382
Marc@SevaCo.ca

343 Preston St., 11th Floor, Ottawa
613-716-7382 • SevaCo.ca

Lennard:



1600 Laperriere Avenue

Located on Laperriere Avenue near Clyde Avenue



Available Space

Suite 205: 4,377 SF



Parking

2:1000 SF



Availability

Immediately



Net Rent

\$17.00 PSF



TMI

\$12.00 PSF



Tenant Incentives

Free Rent / Improvement Packages
Available

Property Highlights

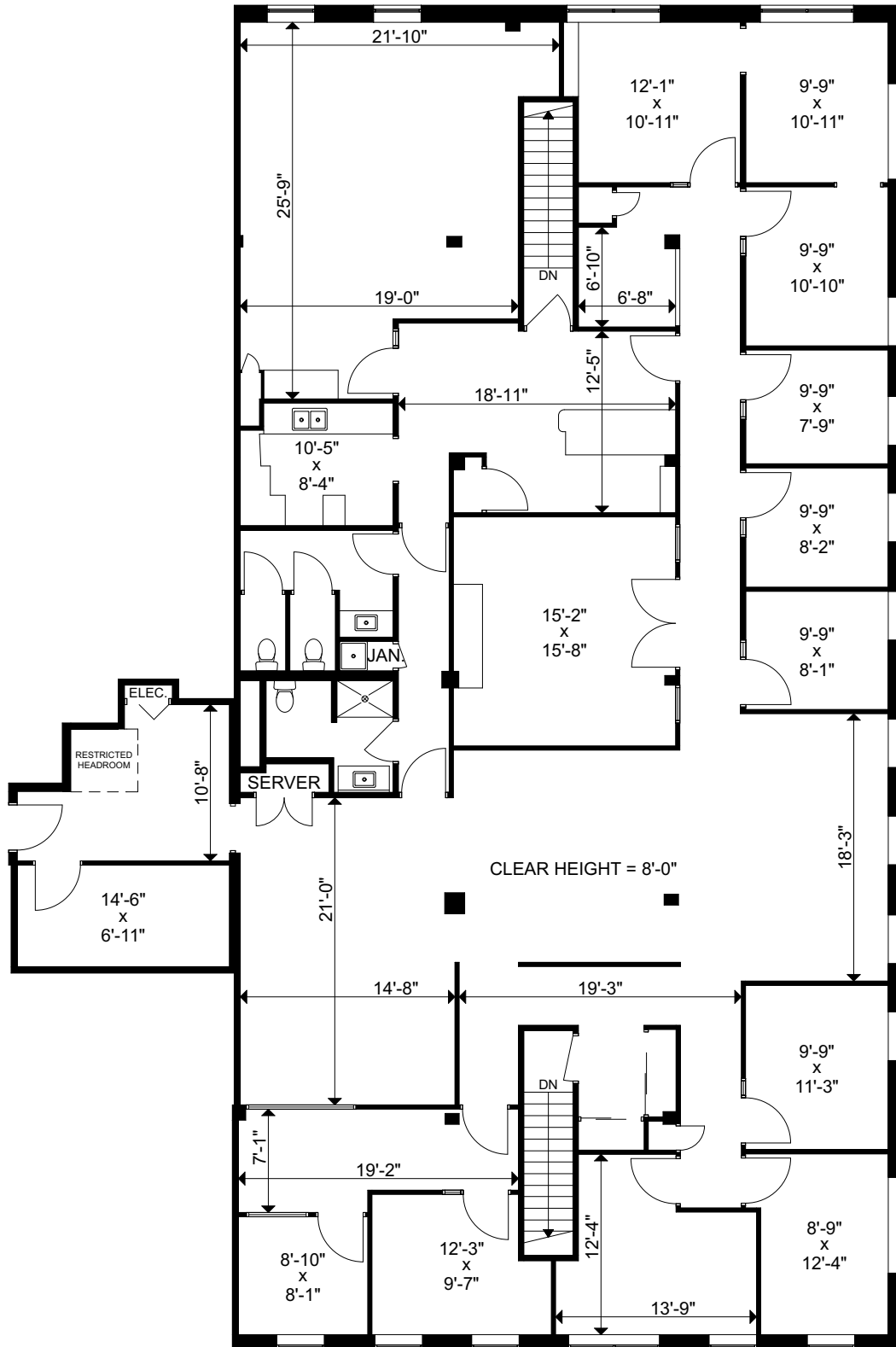
- 4,377 SF of turnkey office space available for lease in the heart of the 417 corridor
- Functional layout that includes a mix of exterior offices, open work space, reception, bathrooms, kitchenette and a boardroom
- Conveniently located at Carling Avenue and Highway 417 with ample parking for staff and clients
- Dedicated walk-up entry with second floor light box and street pylon signage available



1600 Laperriere Avenue

Unit Floor Plan

Suite 205: 4,377 SF



1600 Laperriere Avenue

Photos



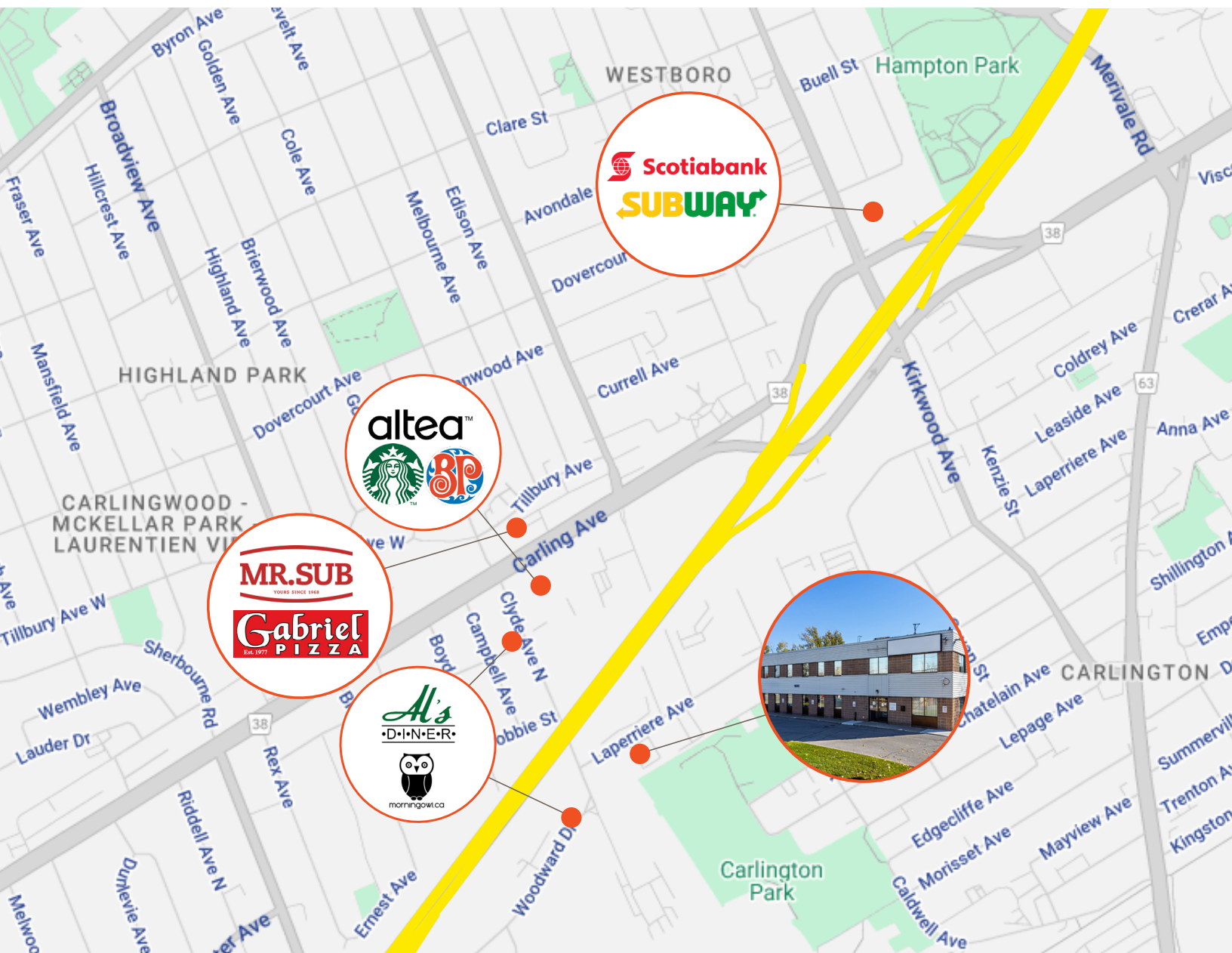
1600 Laperriere Avenue

Photos



1600 Laperriere Avenue

Location Map



Altea Fitness Centre
650 M



Morning Owl Coffee
250 M



Highway 417
1.5 KM
Laperriere / McBride Bus Stop
400 M
Laperriere / Clyde Bus Stop
130 M

Lennard:

Lennard:

Brent Heeney,
Sales Representative
D. 613.963.2631
bheeney@lennard.com

333 Preston Street, Suite 420
Ottawa, ON K1S 5N4
613.963.2640
lennard.com



Marc Morin*
Broker
D. 613-716-7382
Marc@SevaCo.ca

343 Preston St., 11th Floor,
Ottawa, ON K1S 5N4
613-716-7382
SevaCo.ca

*Sales Representative

Statements and information contained are based on the information furnished by principals and sources which we deem reliable but for which we can assume no responsibility.