

Bonus \$1.50 Co-op Fee



For Sublease: Office

1600 Stellar Drive

Plug & Play Opportunity in Whitby, Ontario

Lennard:

Here is where your business will *grow*.

lennard.com

1600 Stellar Drive

2,647 office space for Sublease at the northeast corner of Stellar Drive & Thickson Road S.



Suite

G3

Available Space

2,647 SF



Net Rent

Contact Listing Agents

Additional Rent

\$11.00 PSF (2021)



Availability

30 Days

Term

August 30, 2024



Listing Agents

Jay Goldenberg*

Vice President

416.649.5908

jgoldenberg@lennard.com

Leila Agic*

Associate Vice President

416.649.5944

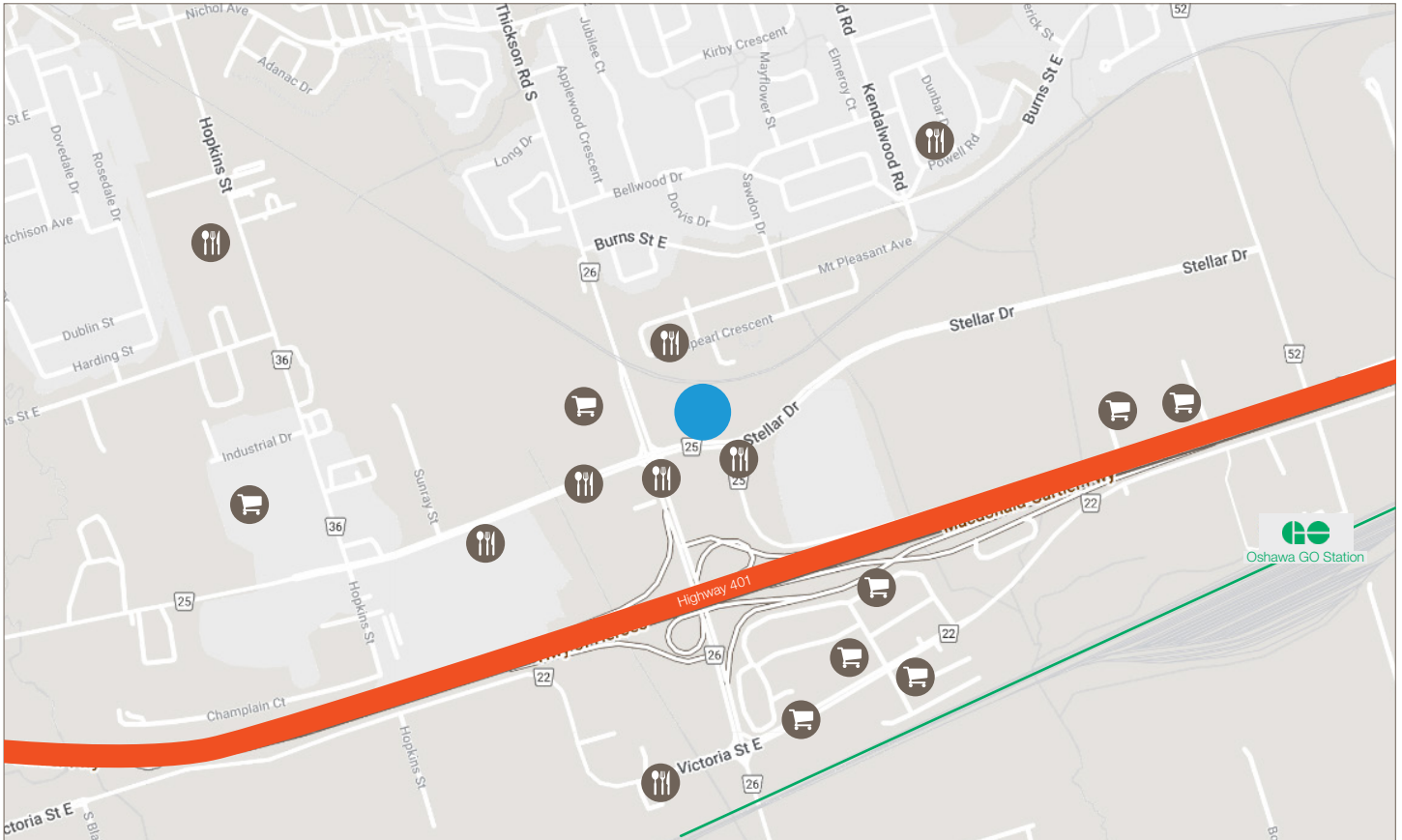
lagic@lennard.com

*Sales Representative

Property Highlights

- Fully furnished for plug and play
- Newly built out with 2 offices, 2 meeting rooms, spacious kitchen/lounge, open area and in-suite washrooms
- 12 workstations
- Lots of natural light
- Parking available
- Proximity to amenities and highway

1600 Stellar Drive



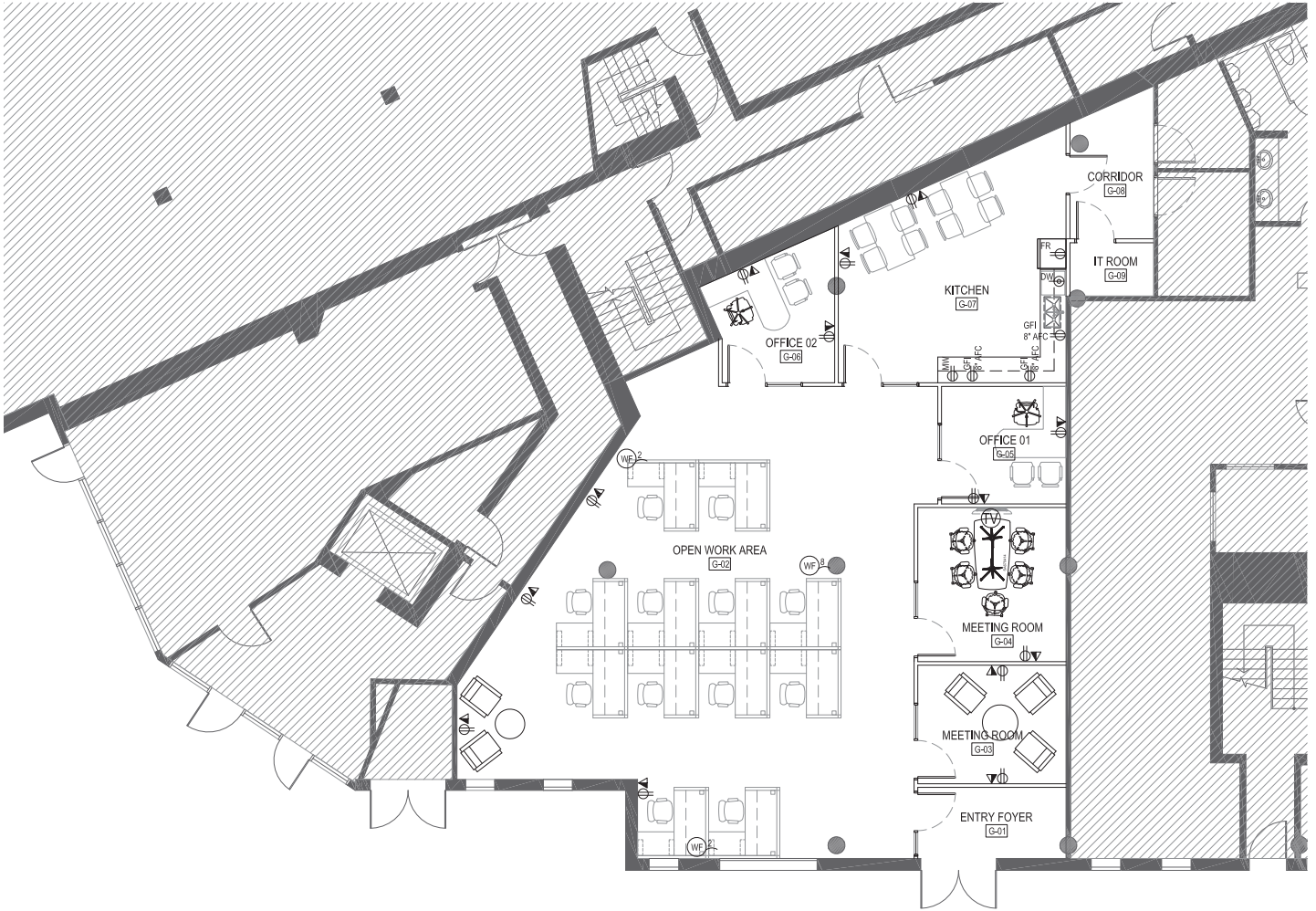
What's Near By

- Located off Highway 401 & Thicksen Road
- Close Proximity to Oshawa GO Station and VIA Rail
- Close to Local Amenities, Shopping, Restaurants, Hotels & Durham College

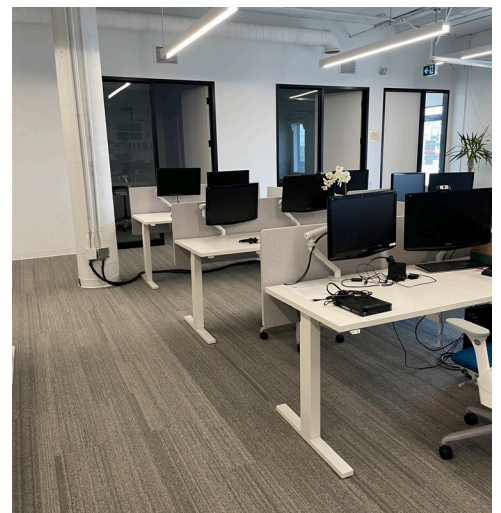
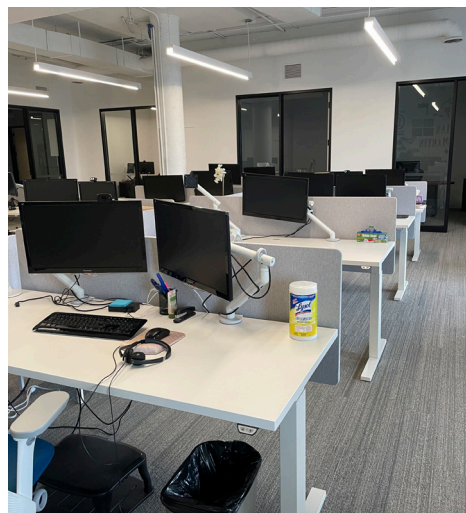
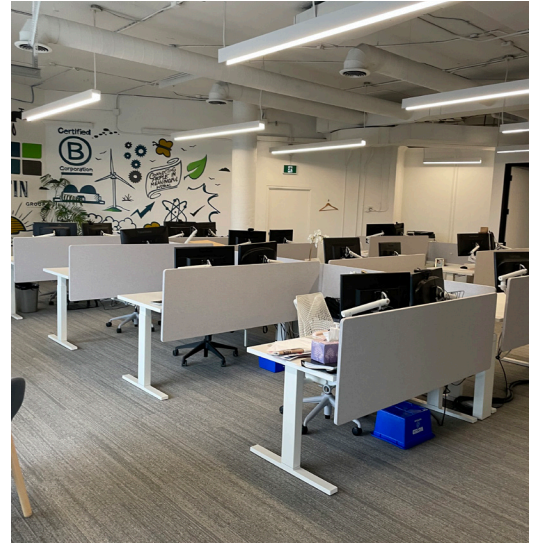
Statements and information contained are based on the information furnished by principals and sources which we deem reliable but for which we can assume no responsibility. Lennard Commercial Realty, Brokerage 2023.

1600 Stellar Drive

Floor Plan: Suite G3



1600 Stellar Drive



1600 Stellar Drive

