

Here is where your
business will *grow*.



For Lease: Office

1593 Ellesmere Road

2nd Floor Office Space in Prime Location

Lennard:

201-60 Columbia Way
905.752.2220

lennard.com

1593 Ellesmere Road

277 SF office space available for lease at McCowan Road and Ellesmere Road in Scarborough.



Suite 106

277 SF



Monthly Gross Rent

\$900.00



Availability

Immediately

Property Highlights

- Close to Scarborough Town Centre
- Major tenants in plaza include: Subway and Global Pet Foods
- Lots of parking
- Easy access
- Close to all public transit

Lennard:

Cole Braithwaite*, Vice President
905.917.2051 • cole@lennard.com

*Sales Representative

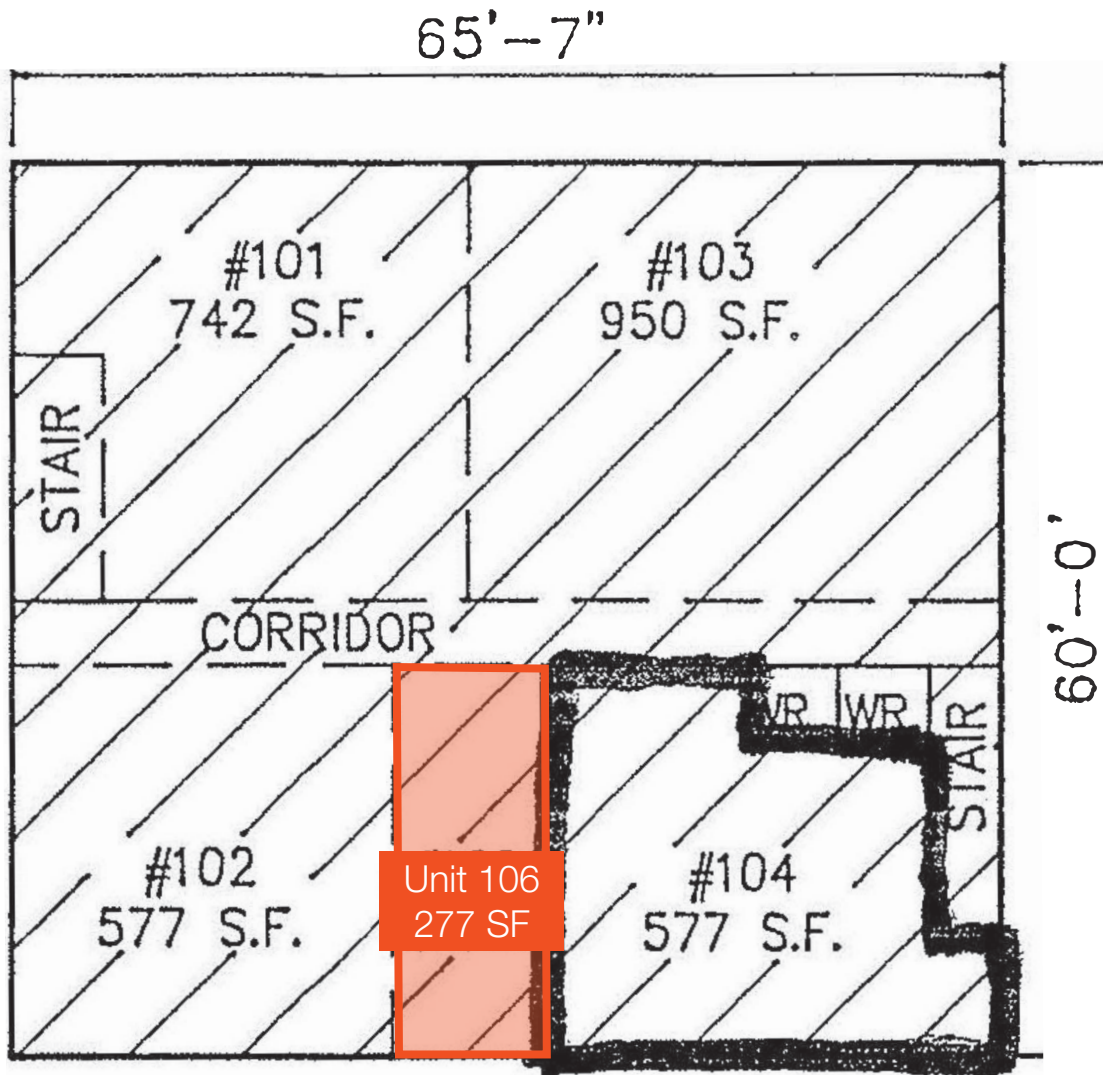
lennard.com

1593 Ellesmere Road



1593 Ellesmere Road

Office Space Floor Plan



1593 Ellesmere Road



Lennard:

lennard.com

Lennard:

Cole Braithwaite* CCIM, Vice President
905.917.2051
cole@lennard.com

201-60 Columbia Way, Markham
905.752.2220
lennard.com

*Sales Representative

Statements and information contained are based on the information furnished by principals and sources which we deem reliable but for which we can assume no responsibility. Lennard Commercial Realty, Brokerage