

# 1370 Dundas Street E

Mississauga | Office space in 3 storey complex at the corner of Dundas St and Dixie Rd.

For Lease: Office



## Available Space

Suite 201:	1,140 SF	\$17.00
Suite 203B:	1,304 SF	\$17.00
Suite 205:	2,494 SF	\$15.00
Suite 210:	1,295 SF	\$15.00
Suite 205/210:	3,789 SF	\$15.00
Suite 304:	3,043 SF	\$15.00

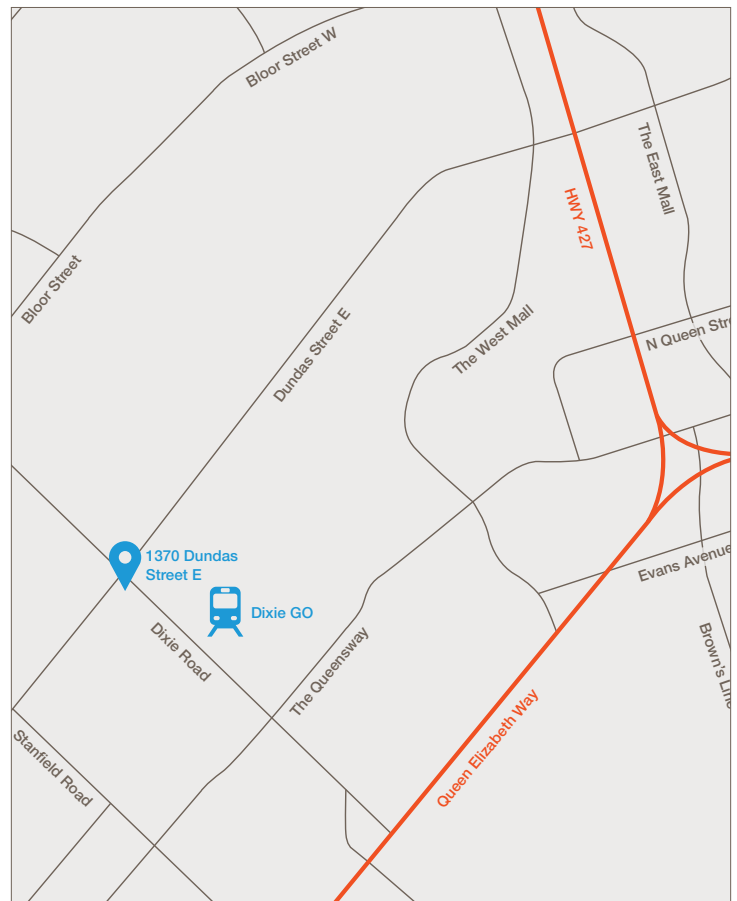
## Net Rent (PSF)

## Additional Rent

**\$15.59 PSF** (2024 est.)  
(Includes utilities)

## Property Highlights

- Close to Hwy 427 & QEW
- Bus stop at front of property
- 3 storey complex – office space on 2nd & 3rd floors
- Abundant free surface parking at back of property
- Great visibility podium & building fascia signage
- Ideal for medical, retail and professional uses
- Intercom for after hours



# Lennard:

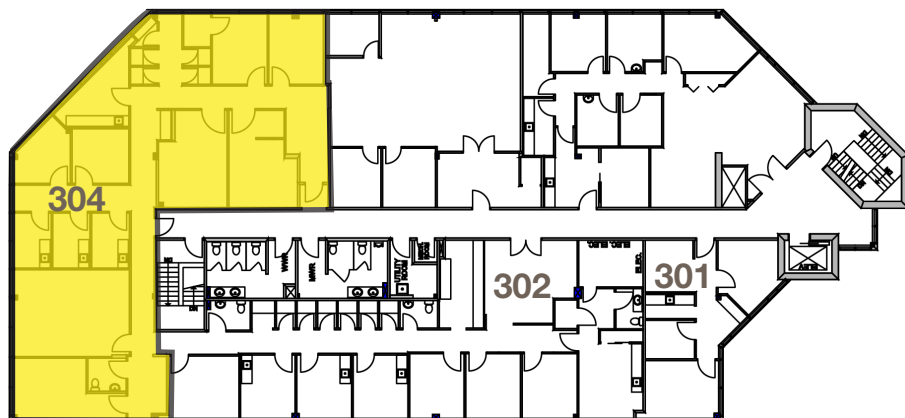
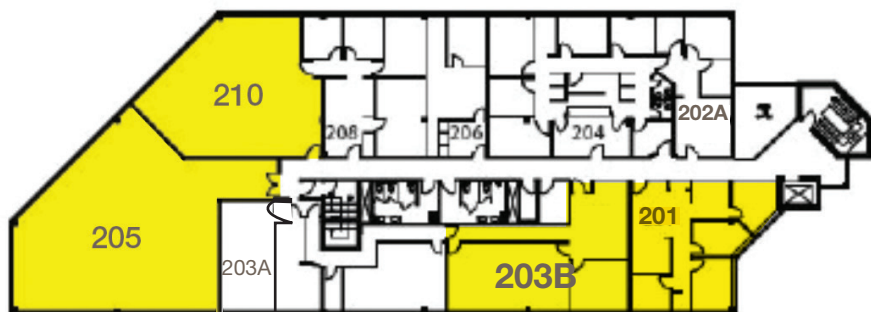
Lennard Commercial Realty, Brokerage  
602-350 Burnhamthorpe Road W  
905.625.5020 • [lennard.com](http://lennard.com)

Steven Gottdank\*, Vice President  
905.247.9221 • [sgottdank@lennard.com](mailto:sgottdank@lennard.com)  
Bob Cranch\*, Vice President  
905.247.9223 • [bcranch@lennard.com](mailto:bcranch@lennard.com)

# 1370 Dundas Street E



## Floor Plans



**Lennard:**

Lennard Commercial Realty, Brokerage  
602-350 Burnhamthorpe Road W  
905.625.5020 • [lennard.com](http://lennard.com)

Steven Gottdank\*, Vice President  
905.247.9221 • [sgottdank@lennard.com](mailto:sgottdank@lennard.com)

Bob Cranch\*, Vice President  
905.247.9223 • [bcranch@lennard.com](mailto:bcranch@lennard.com)

\*Sales Representative. Statements and information contained are based on the information furnished by principals and sources which we deem reliable but for which we can assume no responsibility. Property outlines are approximate. Lennard Commercial Realty, Brokerage.