



For Lease: Industrial

# 1210 Markham Road, Unit 6

Rare 5,243 SF Industrial Unit in Established Industrial Node

**Lennard:**

Here is where your business will *grow*.

[lennard.com](http://lennard.com)

# 1210 Markham Road



Unit 6

5,243 SF

Office

10%

Industrial

90%



Net Rent

\$16.95 SF

Additional Rent

\$5.40 PSF



Shipping

1 Truck Level



Clear Height

16'



Power

600 Volts, 60 Amps



Listing Agent

Marty Atkins\*\*

Vice President

416.565.3455

matkins@lennard.com

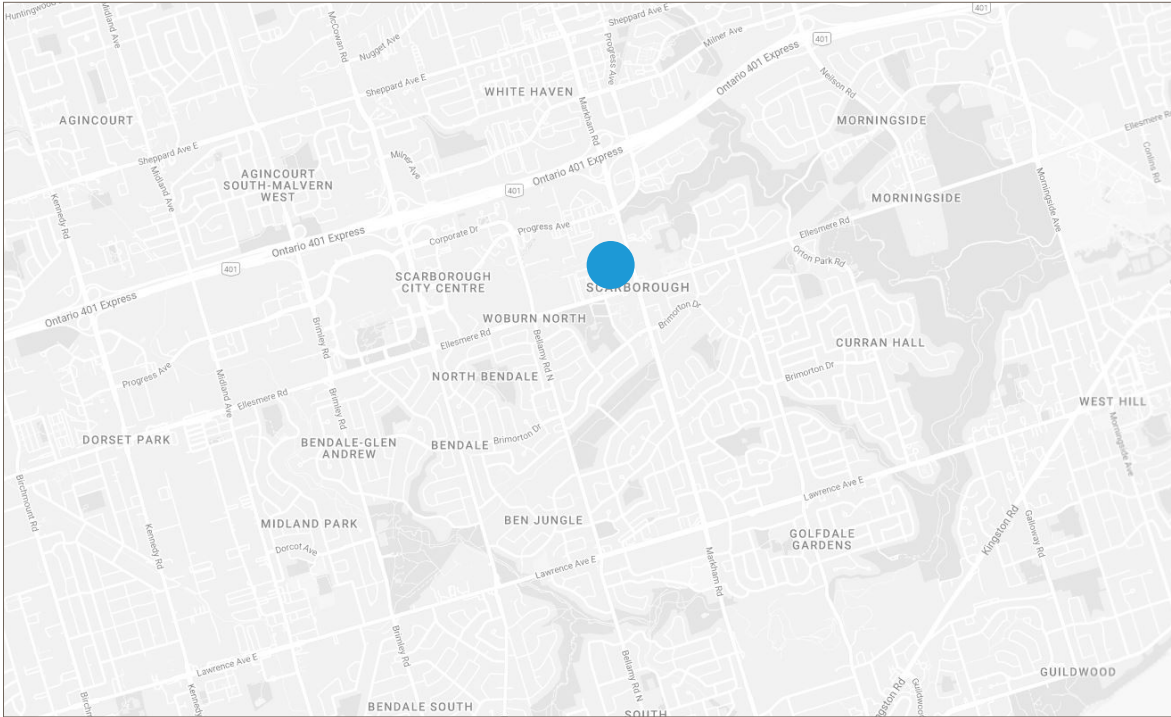
\*\*Broker





# 1210 Markham Road

Industrial unit for lease at the corner of Markham Road and Ellesmere Road in Scarborough.

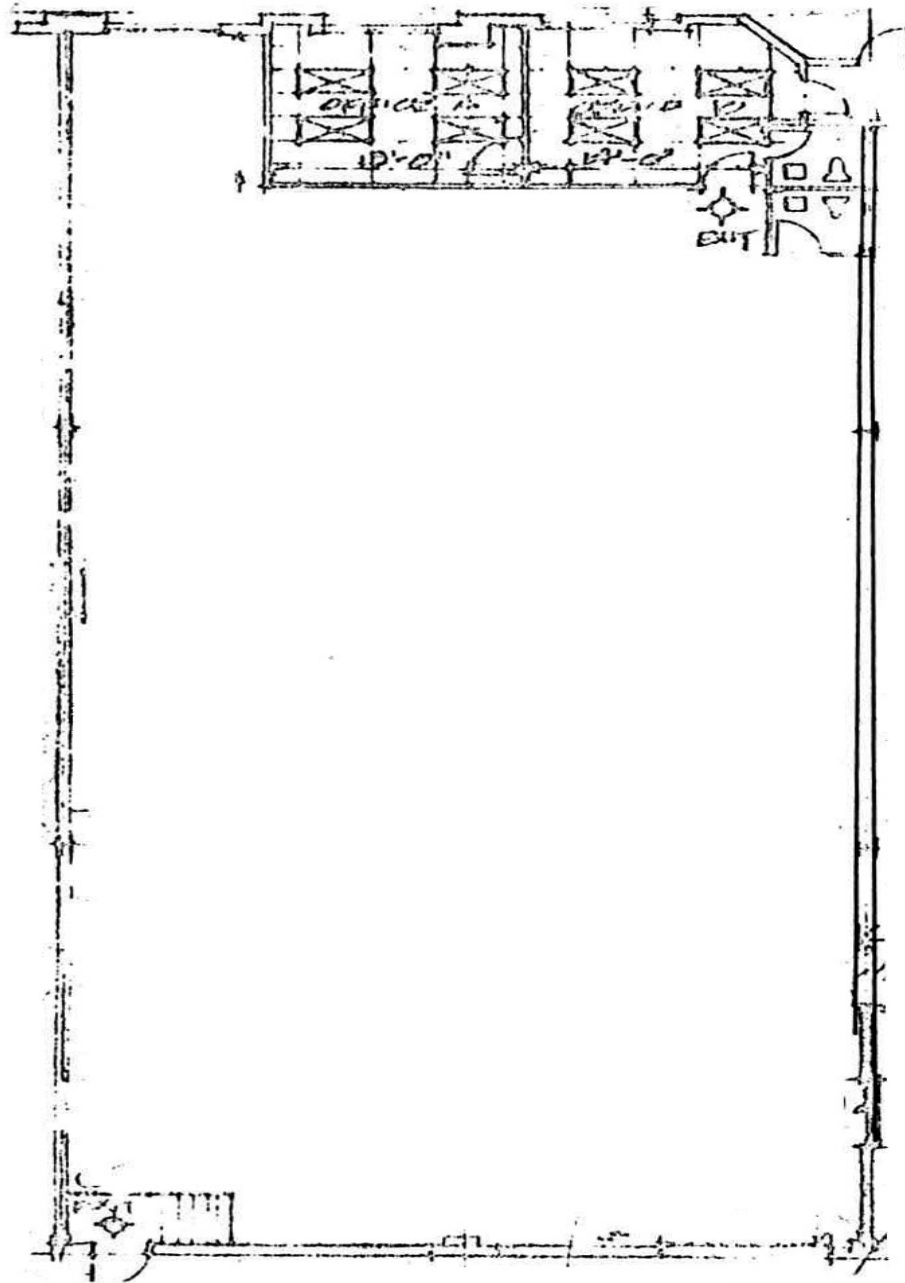


## Property Highlights

- Clean functional industrial unit
- Good truck access
- Close to Highways 401 & 407
- Bus transportation at door
- 2 offices

# 1210 Markham Road, Unit 6

## Floor Plan



**Lennard:**

Marty Atkins\*\*, Vice President  
416.565.3455 • matkins@lennard.com

\*\*Broker

[lennard.com](http://lennard.com)

# Lennard:

Marty Atkins\*\*, Vice President  
416.565.3455  
[matkins@lennard.com](mailto:matkins@lennard.com)

201-60 Columbia Way, Markham  
905.752.2220  
[lennard.com](http://lennard.com)

\*\*Broker

Statements and information contained are based on the information furnished by principals and sources which we deem reliable but for which we can assume no responsibility. Lennard Commercial Realty, Brokerage.