

**Lennard:**



11760 Woodbine Avenue  
4,532 SF Place of Worship on 1.251 acres in Stouffville

# 11760 Woodbine Avenue



A rare opportunity to acquire a well-maintained place of worship at 11760 Woodbine Avenue in Gormley, offering a versatile facility on a prominent site with convenient access to Highway 404.



Church

4,532 SF

Lot Size

1.251 acres



Zoning

ORM-C



Asking Price

Contact Listing Agent



Listing Agent

Scott Sutherland\*

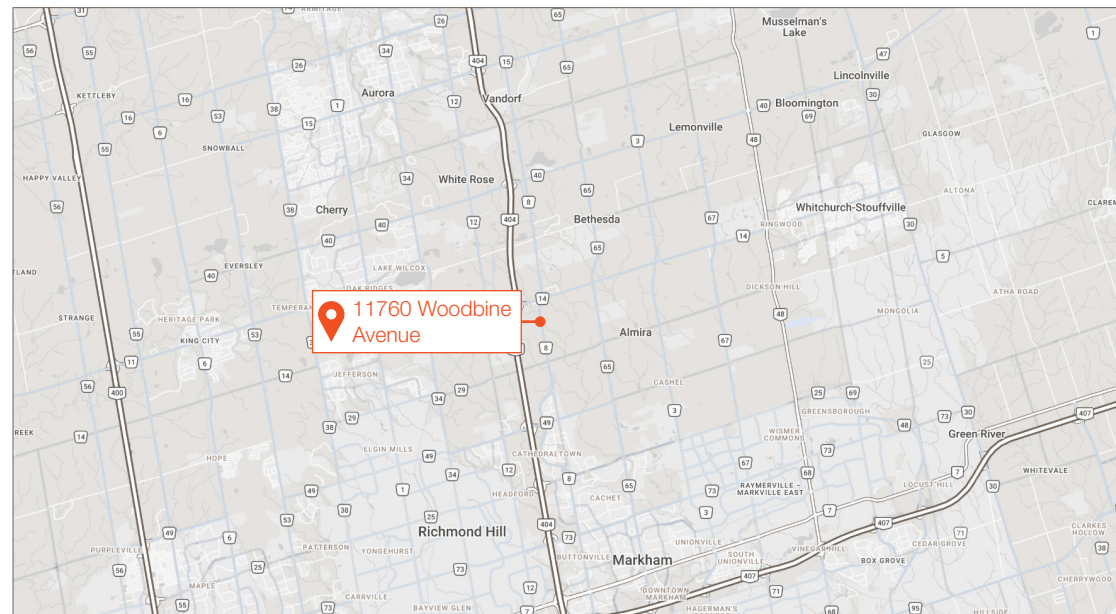
Partner

416.804.1101

ssutherland@lennard.com

## Property Highlights

- Finished lower level and a detached bungalow with one car garage at approx 1,154 SF (not included in total size) which is currently being used as a clergy residence
- Large paved parking area surrounds the church on three sides
- 16x15.5 ft shed
- 2km south of Gormley, 10km to the Town of Stouffville, and 5km to the Town of Richmond Hill



**Lennard:**

lennard.com  
\*Sales Representative

# 11760 Woodbine Avenue



**Lennard:** Scott Sutherland\*, Partner | 416.804.1101 • [ssutherland@lennard.com](mailto:ssutherland@lennard.com)

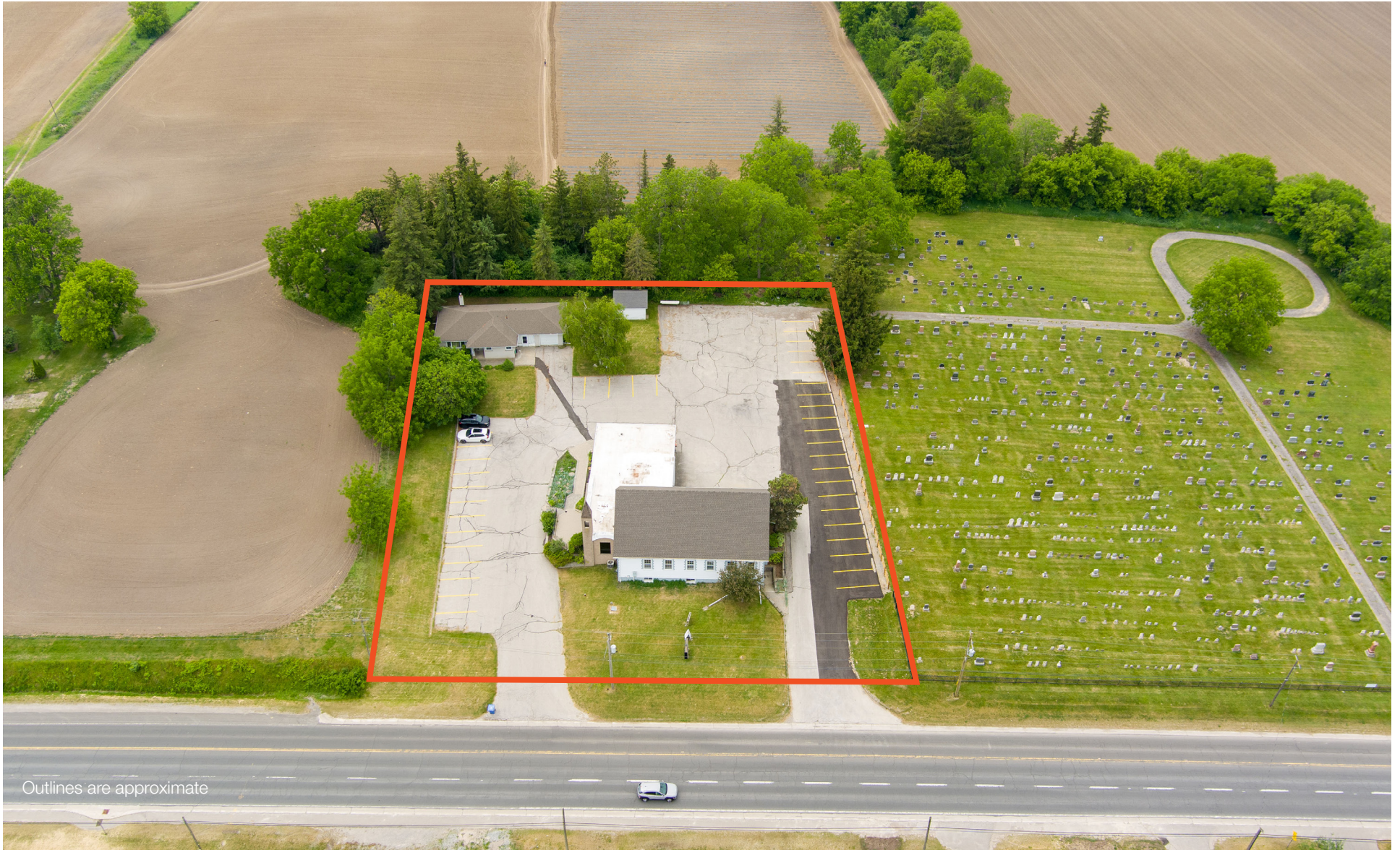
\*Sales Representative

[lennard.com](http://lennard.com)

# 11760 Woodbine Avenue



# 11760 Woodbine Avenue



Outlines are approximate

**Lennard:** Scott Sutherland\*, Partner | 416.804.1101 • [ssutherland@lennard.com](mailto:ssutherland@lennard.com)

\*Sales Representative

[lennard.com](http://lennard.com)

# Lennard:

Scott Sutherland\*, Partner  
416.804.1101  
[ssutherland@lennard.com](mailto:ssutherland@lennard.com)

201-60 Columbia Way, Markham  
905.752.2220  
[lennard.com](http://lennard.com)

\*Sales Representative

Statements and information contained herein are based on information furnished by principals and sources we deem reliable; however, we make no representation or warranty as to the accuracy, completeness or current status of such information and assume no responsibility for any errors, omissions, or misstatements. All information should be independently verified by the recipient. Lennard Commercial Realty, Brokerage.