

# 1151 Dundas Street W

Mississauga, ON

For Lease: Retail



Unit 19

847 SF



Net Rent

\$35.00 PSF

CAM

\$12.50 PSF

Realty Taxes

\$5.55 PSF



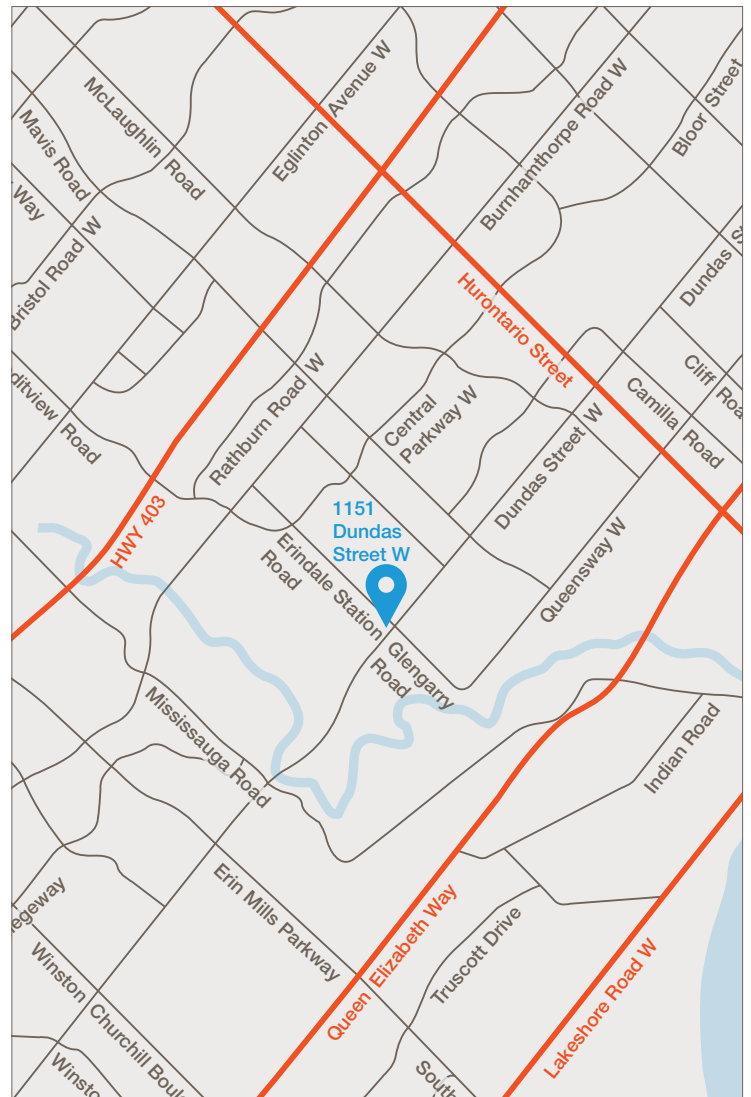
K5 (kiosk)

150 SF



Gross Lease

\$2,700.00



## Highlights

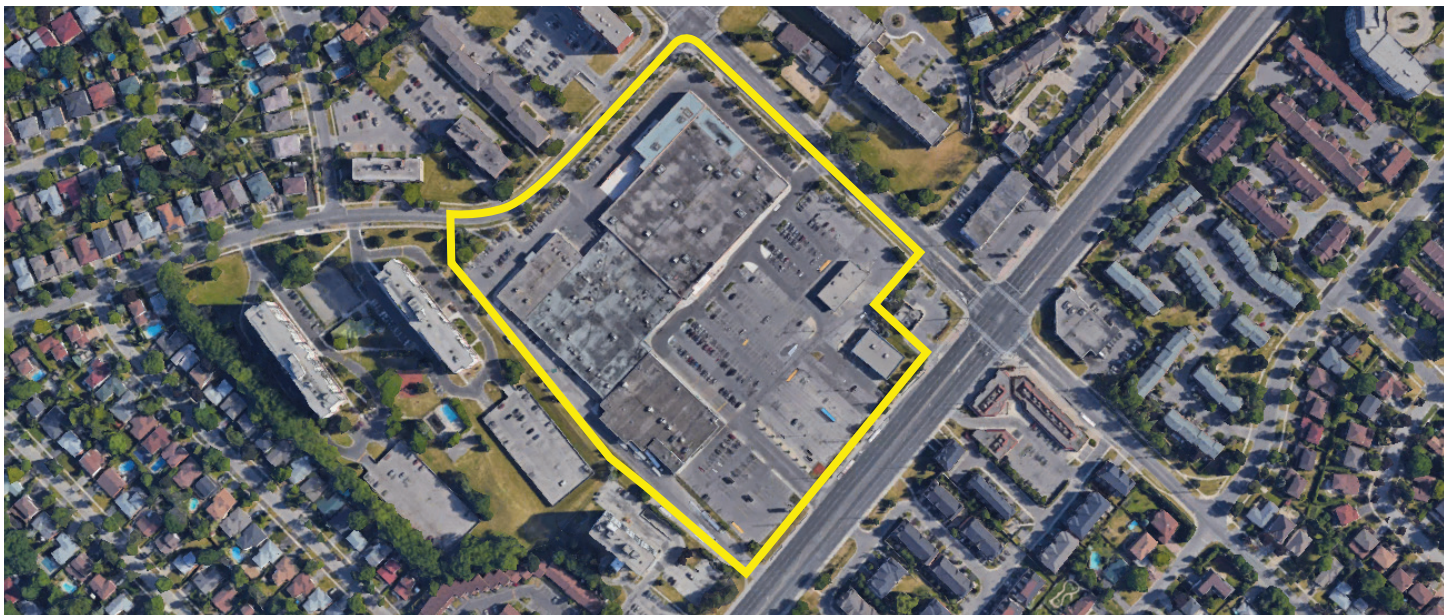
- Destination Mall
- Premier location
- Busy plaza located at the corner of Dundas Street W. and Erindale Station Rd.
- Signage opportunities
- Abundance of parking
- Transit at doorstep
- Tenant's include: Bank of Montreal, Winners, Giant Tiger, Freshco, Service Ontario, Tim Horton's, Chuck's Roadhouse, Dollarama, Beer Store

**Lennard:**

Lennard Commercial Realty, Brokerage  
602-350 Burnhamthorpe Road W  
905.625.5020 • [lennard.com](http://lennard.com)

Steven Gottdank\*, Vice President  
905.247.9221 • [sgottdank@lennard.com](mailto:sgottdank@lennard.com)

# 1151 Dundas Street W



**Lennard:**

Lennard Commercial Realty, Brokerage  
602-350 Burnhamthorpe Road W  
905.625.5020 • [lennard.com](http://lennard.com)

Steven Gottdank\*, Vice President  
905.247.9221 • [sgottdank@lennard.com](mailto:sgottdank@lennard.com)

\*Sales Representative.

Statements and information contained are based on the information furnished by principals and sources which we deem reliable but for which we can assume no responsibility. Property outlines are approximate. Lennard Commercial Realty, Brokerage.