

For Sale: Land

# 1134 County Road 15

47.49 acres of Land located in Prince Edward County



**Lennard:**

201-60 Columbia Way, Markham  
905.752.2220 • [lennard.com](http://lennard.com)



# 1134 County Road 15

47 acres of land located in Prince Edward County with a short drive to Highway 401 and a 15 minute drive from Picton amenities.



Total Area  
**47.49 acres**



Zoning  
**RU2 - Rural 2 Zone**



PIN Number  
**550420172**



Asking Price  
**\$999,000**



Listing Agent  
**Paul Kotyk\*\***

Broker  
D. 905.917.1627  
C. 416.890.0324  
pkotyk@lennard.com

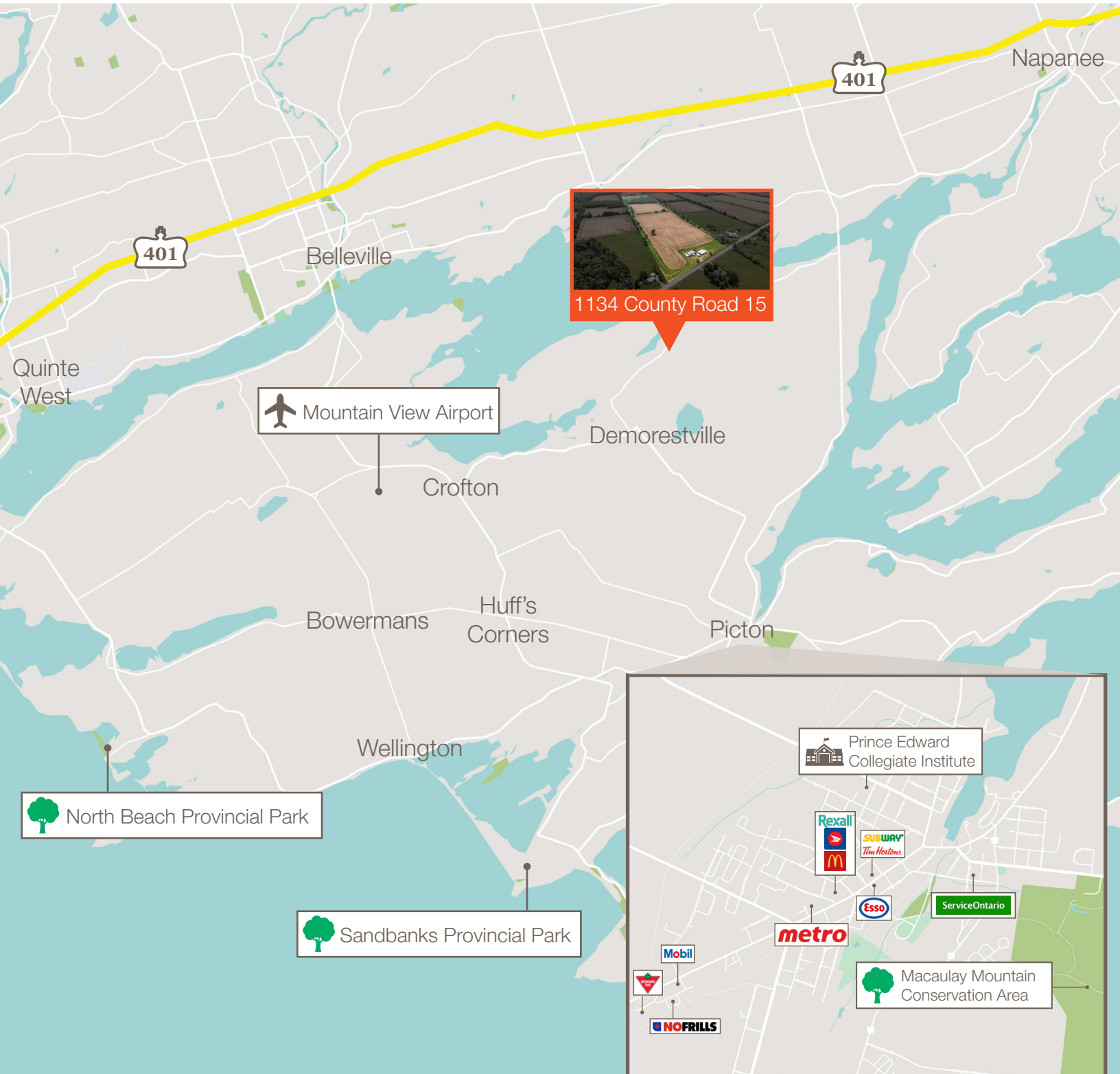
\*\*Broker

## Property Highlights

- Includes Barn, cattle barn and outbuild
- 10 minutes from Picton Amenities
- 10 minutes from Hwy 401
- 30 minutes to Sandbanks Provincial Park



# Nearby Amenities



# Zoning

## RU2 - Rural Zone 2

### 8.1 Permitted Residential Uses

- One single detached dwelling
- Home business
- Rural home business
- Private home day care
- Bed and breakfast establishment
- Group home
- Uses, buildings and structures accessory to the foregoing permitted uses
- Accessory farm accommodation
- One second unit or one garden suite

### 8.2 Permitted Non-Residential Uses

- Agriculture
- Commercial greenhouses
- Conservation area including passive outdoor recreation activities, nature study and wildlife areas, or other similar use as provides for the preservation of the natural environment
- Equestrian centre
- Farm
- Farm produce outlet
- Forestry and reforestation
- Garden nursery sales and supply establishment 8.2.9 kennel





# Photos





# Photos







## Lennard:

Paul Kotyk\*\*

Broker

D. 905.917.1627

C. 416.890.0324

[pkoty@lennard.com](mailto:pkoty@lennard.com)

201-60 Columbia Way, Markham

905.752.2220

[lennard.com](http://lennard.com)

\*\*Broker

Statements and information contained are based on the information furnished by principals and sources which we deem reliable but for which we can assume no responsibility. Lennard Commercial Realty, Brokerage.