



For Lease: Retail/Flex Space

1024 Dundas Street E

9,935 SF of Available Space

Lennard:

602-350 Burnhamthorpe Road W, Mississauga
905.625.5020

lennard.com

1024 Dundas Street E



Unit

2

Available Space

9,935 SF



Net Rent

\$25.00 PSF

Additional Rent

\$2.25 (2022 Est.)



Availability

Immediate



Listing Agents

Trevor Ellis*

Senior Vice President

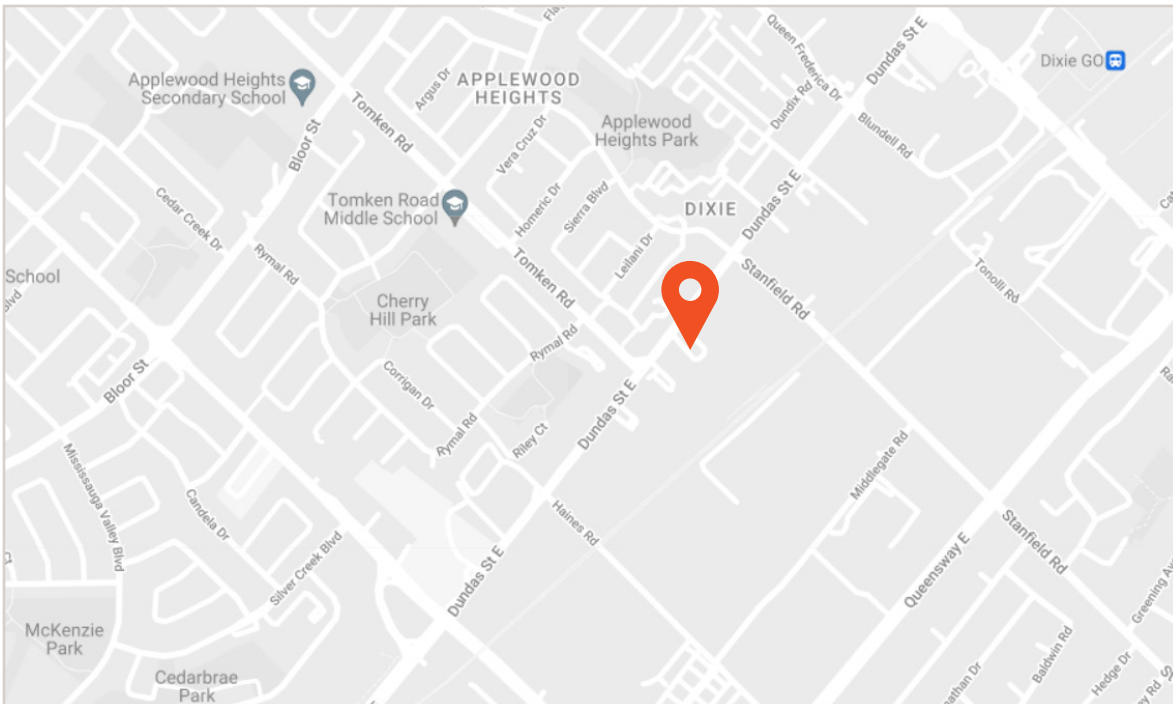
905.247.9229

tellis@lennard.com

*Broker

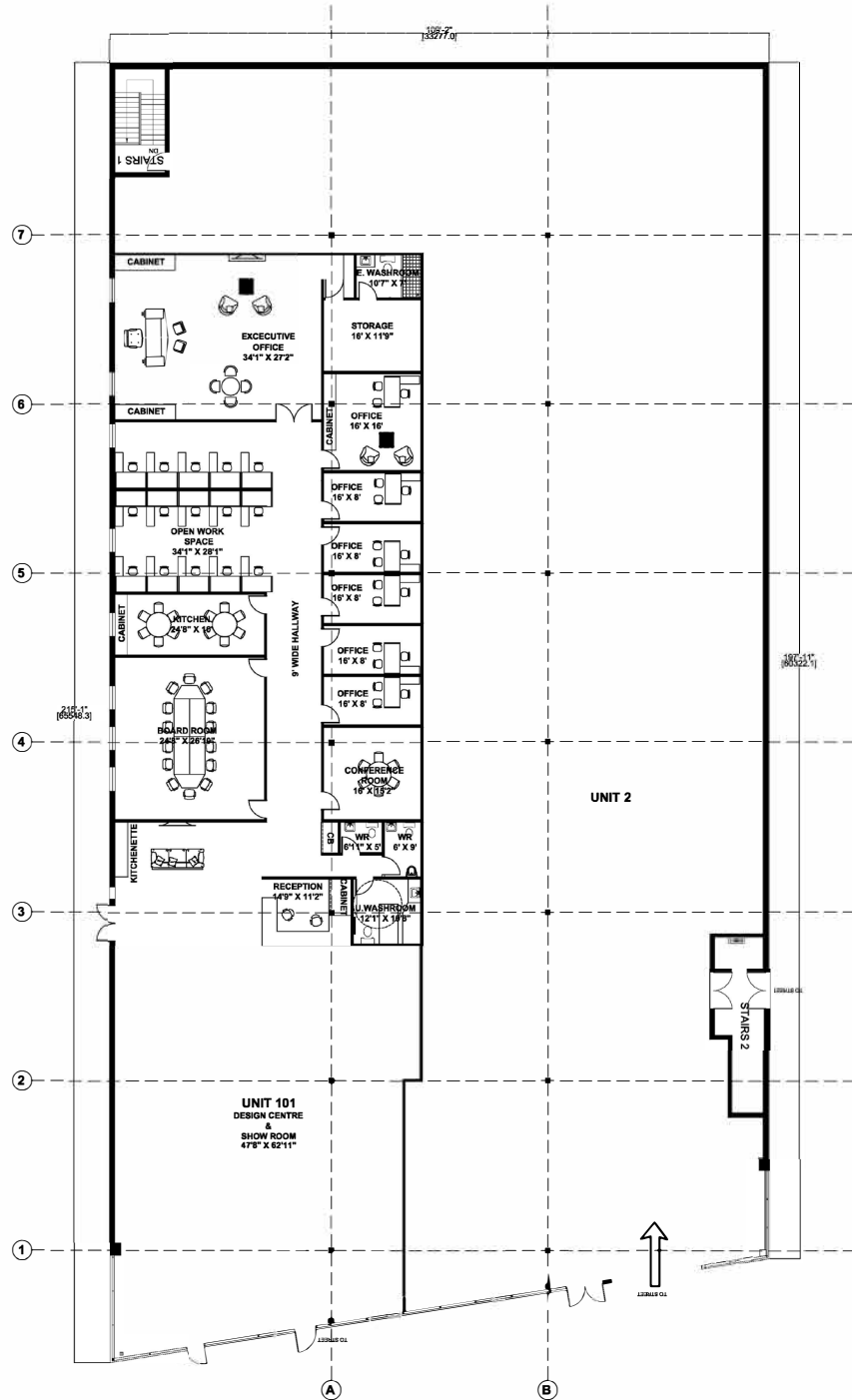
Property Highlights

- High exposure retail/flex space
- Flexible term length
- Signage available



1024 Dundas Street E

Floor Plan



Lennard:

Trevor Ellis*, Senior Vice President
905.247.9229 • tellis@lennard.com

*Broker

lennard.com

Lennard:

Trevor Ellis*, Senior Vice President
905.247.9229
tellis@lennard.com

602-350 Burnhamthorpe Road W, Mississauga
905.625.5020
lennard.com

*Broker
Statements and information contained are based on the information furnished by principals and sources which we deem reliable but for which we can assume no responsibility. Lennard Commercial Realty, Brokerage 2022.