



For Lease: Office

2345 Stanfield Road

Mississauga Office Space Available for Lease

Lennard:

Here is where your business will *grow*.

lennard.com

2345 Stanfield Road



Available Space

Suite 204: 2956 SF

~~Suite 300: 4,628 SF~~ Leased

~~Suite 304: 2,862 SF~~ Leased

~~Suite 300-304: 7,490 SF~~ Leased



Asking Rate

\$5.00 PSF

\$0.50 PSF annual increases

Additional Rate (2022 Estimate)

\$13.10 PSF

(Excludes janitorial services)



Available

Immediate

Location

- East side of Stanfield Road and just North of Queensway East

Property Highlights

- Built out suites
- Easy access to QEW and Highway 10
- Close to major highways
- Serviced by Mississauga public transit
- Restaurant on site
- Surface and covered parking at no charge
- Renovations include new exterior building entrance and new façade

Lennard:

Joni Blanshard*, Vice President
905.247.9231 • jblanshard@lennard.com

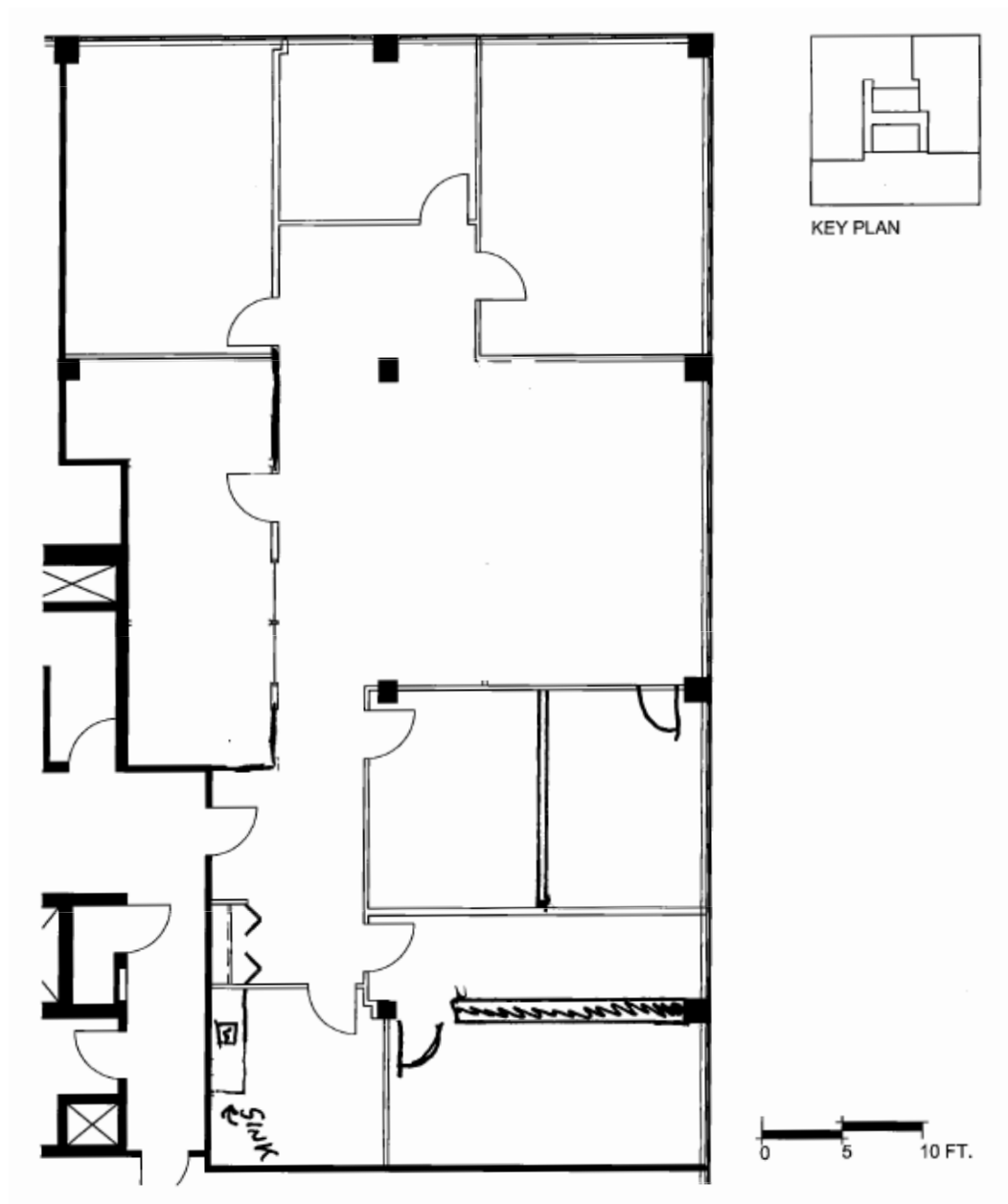
*Sales Representative

lennard.com

2345 Stanfield Road

Floor Plan

Suite 204: 2,956 SF



Lennard:

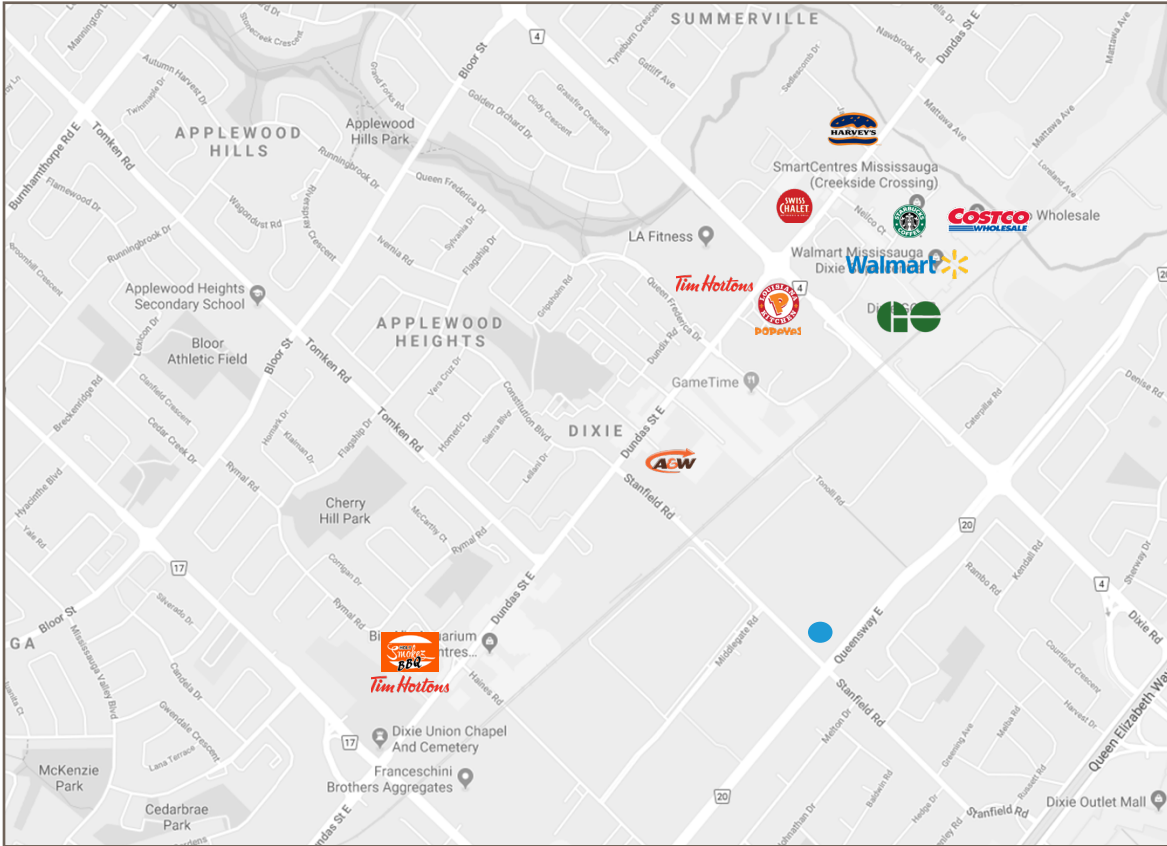
Joni Blanshard*, Vice President
905.247.9231 • jblanshard@lennard.com

*Sales Representative

lennard.com

2345 Stanfield Road

Amenities



Lennard:

Joni Blanshard*, Vice President
905.247.9231 • jblanshard@lennard.com

*Sales Representative

lennard.com

Lennard:

Joni Blanshard*, Vice President
905.247.9231
jblanshard@lennard.com

602-350 Burnhamthorpe Road W, Mississauga
905.625.5020
lennard.com

*Sales Representative

Statements and information contained are based on the information furnished by principals and sources which we deem reliable but for which we can assume no responsibility. Lennard Commercial Realty, Brokerage