



For Sublease: Office

2020 Winston Park Drive

11,160 SF Executive Sublease Available

Lennard: Here is where your business will *grow*.

lennard.com

2020 Winston Park Drive

Located in Oakville's premier business park at Winston Churchill and the QEW. 2020 Winston Park Drive is close to Highways 403, 407 and QEW.



Suite
200

Available Space
11,160 SF*



Net Rent
\$14.50 PSF

Additional Rent (2018 Est.)
\$14.35 PSF



Sublease Expiry
August 30, 2022



Leasing Agent
Joni Blanshard*
Vice President
905.247.9231
jblanshard@lennard.com

Leasing Agent
David Cape*
Vice President
416.649.5932
dcape@lennard.com

*Space is divisible into 2 suites comprising of approximately 6,060 SF & 5,100 SF.

*Sales Representative

Property Highlights

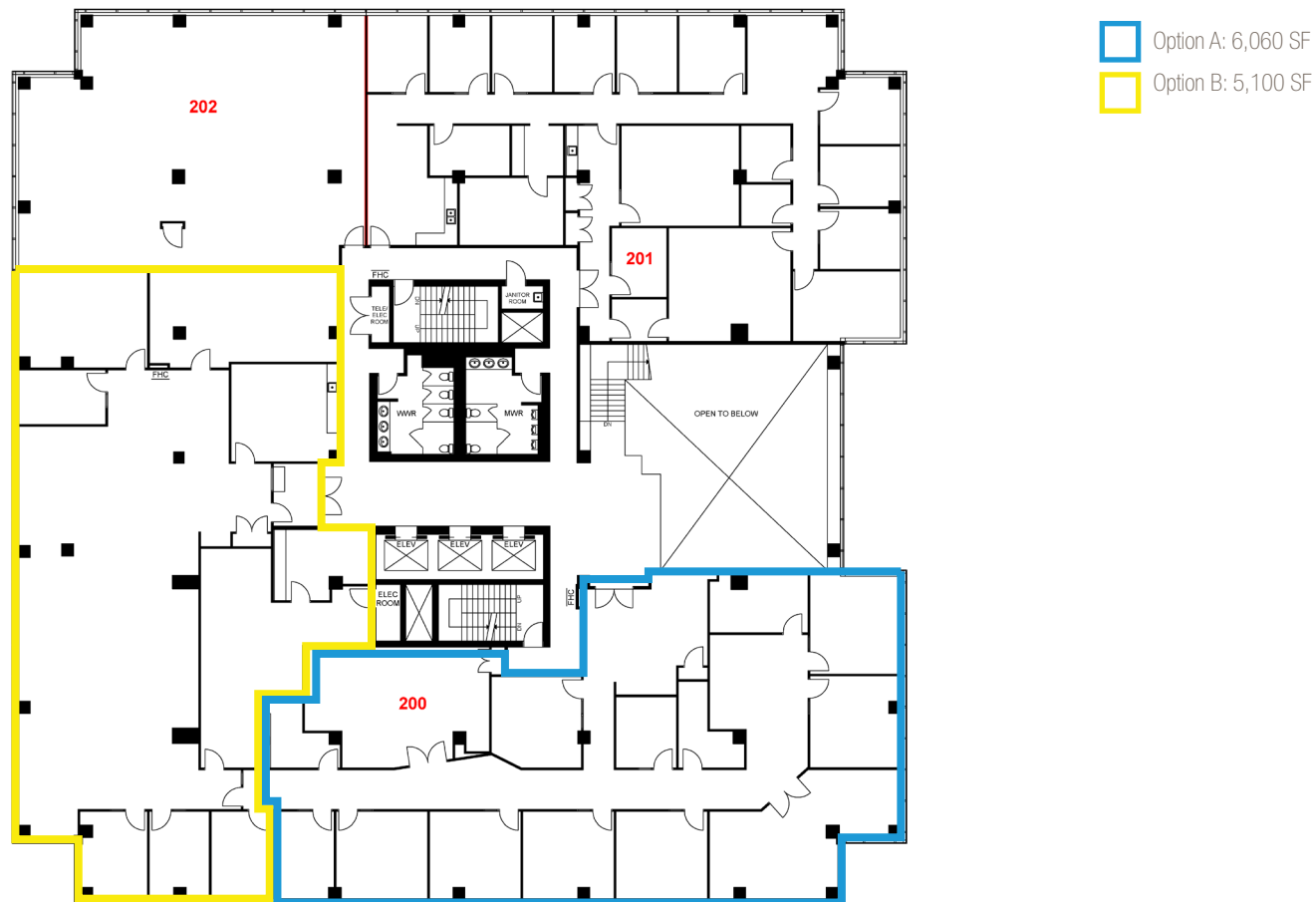
- Ample parking on site for both employees and clients
- Full service cafe located on the ground floor
- Building has initiated green initiatives in the lighting and heating and cooling (HVAC) systems
- Serviced by Oakville public transit with Mississauga transit nearby
- Adjacent to many retail amenities including banks, restaurants, and coffee shops

2020 Winston Park Drive



Suite Highlights

- 2 sets of double glass suite doors
- 12 offices on glass, large boardroom, 2 smaller meeting rooms, kitchen, open area and server room
- Space is well maintained and shows well
- Furniture can be made available
- Suite is divisible



Lennard:

Joni Blanshard*, Vice President
905.247.9231 • jblanshard@lennard.com

David Cape*, Vice President
416.649.5932 • dcape@lennard.com

*Sales Representative

lennard.com

2020 Winston Park Drive

Local Amenities



Statements and information contained are based on the information furnished by principals and sources which we deem reliable but for which we can assume no responsibility. Lennard Commercial Realty, Brokerage 2018.

Lennard: Joni Blanshard*, Vice President
905.247.9231 • jblanshard@lennard.com

David Cape*, Vice President
416.649.5932 • dcape@lennard.com

*Sales Representative

lennard.com