

1370 Dundas Street E

Mississauga | Office space in 3 storey complex at the corner of Dundas St and Dixie Rd.

For Lease: Office



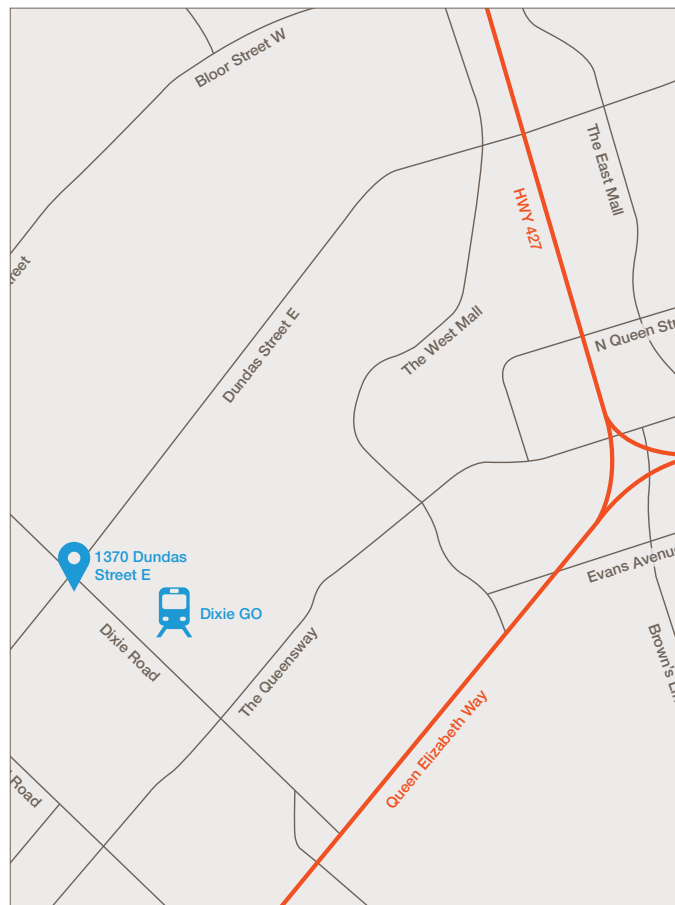
Available Space		Net Rent (PSF)
Suite 202A:	556 SF	\$17.00
Suite 205:	2,834 SF	\$15.00
Suite 210:	1,336 SF	\$15.00
Suite 205/210:	4,170 SF	\$15.00
Suite 302:	5,646 SF	\$15.00
Suite 303:	1,392 SF	\$17.00
Suite 302-304:	7,038 SF	\$15.00

Additional Rent

\$15.59 PSF (2023 est.)
(Includes utilities)

Property Highlights

- Close to Hwy 427 & QEW
- Bus stop at front of property
- 3 storey complex – office space on 2nd & 3rd floors
- Abundant free surface parking at back of property
- Great visibility podium & building fascia signage
- Ideal for medical, retail and professional uses



Lennard:

Lennard Commercial Realty, Brokerage
602-350 Burnhamthorpe Road W
905.625.5020 • lennard.com

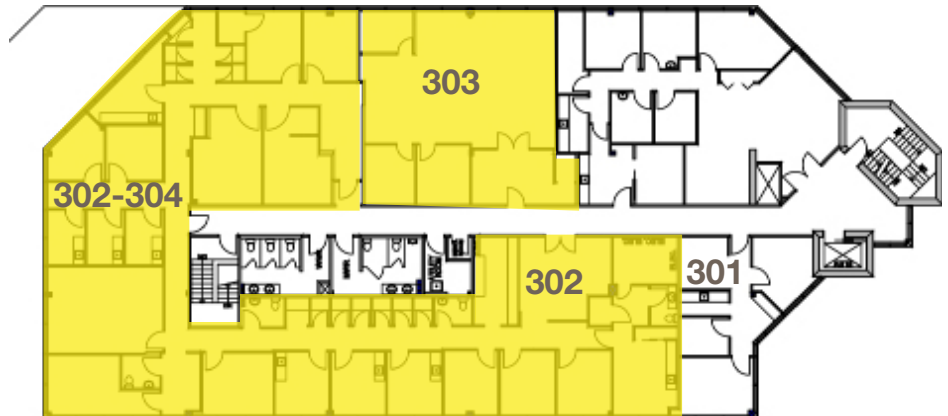
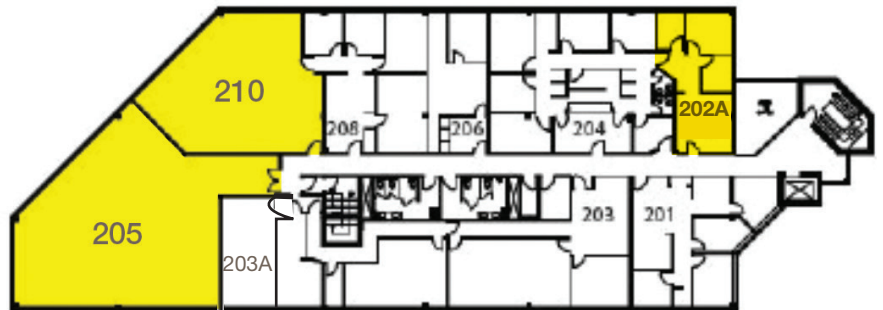
Steven Gottdank*, Vice President
905.247.9221 • sgottdank@lennard.com

Bob Cranch*, Vice President
905.247.9223 • branch@lennard.com

1370 Dundas Street E



Floor Plans



Lennard:

Lennard Commercial Realty, Brokerage
602-350 Burnhamthorpe Road W
905.625.5020 • lennard.com

Steven Gottdank*, Vice President
905.247.9221 • sgottdank@lennard.com

Bob Cranch*, Vice President
905.247.9223 • branch@lennard.com

*Sales Representative. Statements and information contained are based on the information furnished by principals and sources which we deem reliable but for which we can assume no responsibility. Property outlines are approximate. Lennard Commercial Realty, Brokerage 2024.